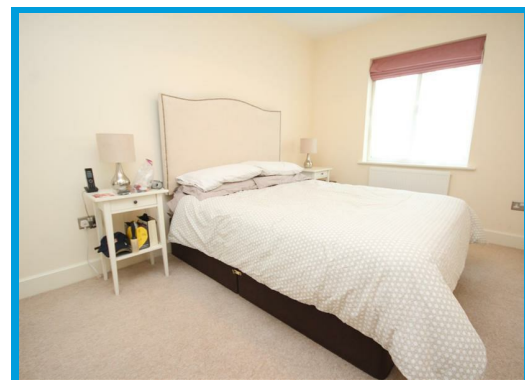




Boundary View, Woodbridge Road Guildford, Surrey GU1 4HJ

£1,600 PCM

Located in the heart of the town centre and within moments of Guildford mainline station, this recently built and spacious two double bedroom apartment is presented in excellent order throughout and features secure gated parking.



Description

Located in the heart of the town centre and within moments of Guildford mainline station and Surrey University, this recently built and spacious two double bedroom apartment is presented in excellent order throughout. The property is accessed with secure phone entry system and comprises a hallway leading to the lounge which has double doors to the patio area overlooking Guildford cricket ground, a modern open plan kitchen with appliances, two double bedrooms and a bathroom with shower. The property has ample built in storage and further features secure gated parking.



Energy Efficiency Rating		Current	Potential
Very energy efficient - lower running costs			
(92 plus) A			
(81-91) B			
(69-80) C			
(55-68) D			
(39-54) E			
(21-38) F			
1-20 G			
Not energy efficient - higher running costs			
England & Wales		EU Directive 2002/91/EC	

Environmental Impact (CO ₂) Rating		Current	Potential
Very environmentally friendly - lower CO ₂ emissions			
(92 plus) A			
(81-91) B			
(69-80) C			
(55-68) D			
(39-54) E			
(21-38) F			
1-20 G			
Not environmentally friendly - higher CO ₂ emissions			
England & Wales		EU Directive 2002/91/EC	

