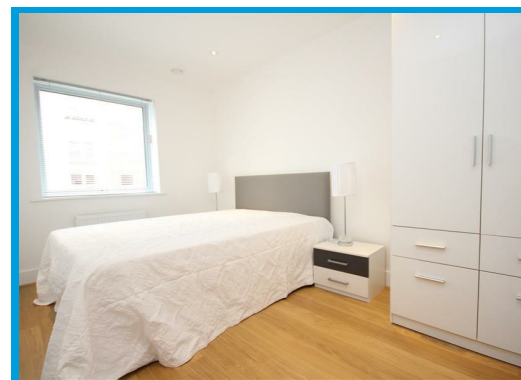
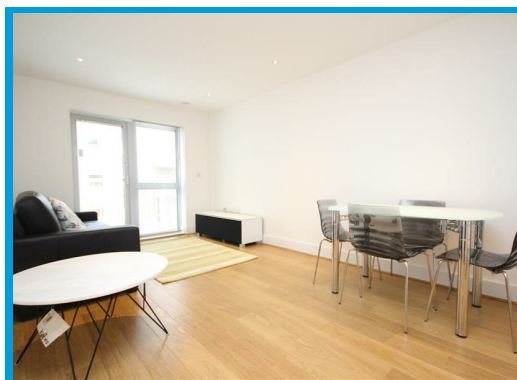
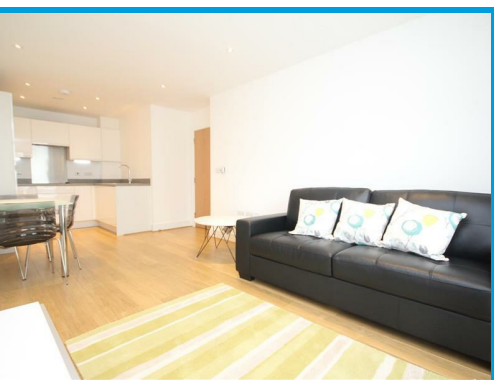




Austen House, Station View Guildford, Surrey GU1 4AX

£2,075 PCM

Moments from Guildford mainline station. With two double bedrooms and a large lounge, the apartment offers light and airy accommodation throughout with secure underground parking.



# Description

The property is accessed through secure telephone system, hallway with access to large open plan reception room/ kitchen with appliances, doors leading to the communal gardens and your own private terrace. Two double bedrooms, the master benefiting from ample built in wardrobes and en suite, a family bathroom with shower over bath and a separate utility room. The property is located moments from the mainline station, comes with underground parking.

