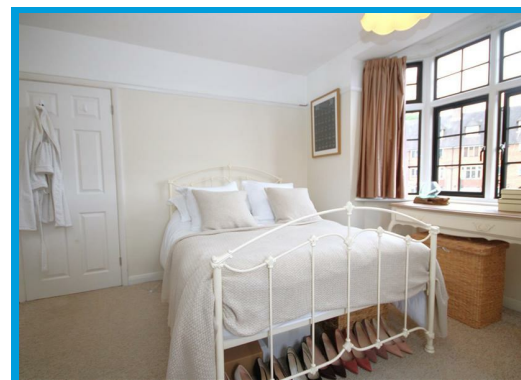




Condor Court, Portsmouth Road Guildford, Surrey GU2 4BP

£1,600 PCM

Positioned within a fantastic town centre location and within moments of the Guildford mainline station, this two bedroom apartment offers spacious and well presented accommodation throughout.



Description

Positioned within a fantastic town centre location and within moments of the Guildford mainline station.

Having been recently refurbished, this beautifully presented apartment offers spacious accommodation throughout and comprises an entrance hall leading to a good size double aspect lounge, two bedrooms, a modern kitchen with appliances and a recently fitted bathroom with shower.

The property further features parking and a communal garden area

