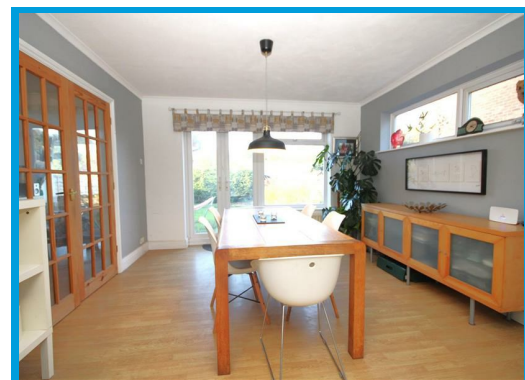
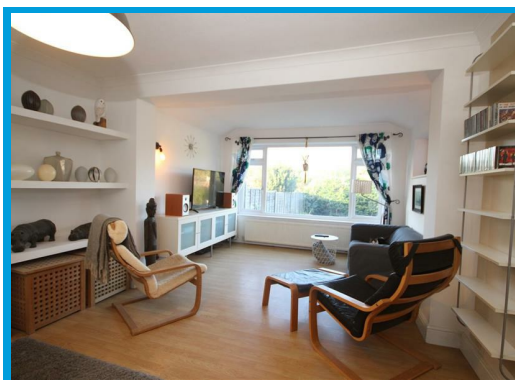




New Road, Chilworth Guildford, GU4 8LX

£2,250 PCM

Located in the highly popular village of Chilworth close to the Surrey Hills, this beautifully presented and spacious four bedroom home is conveniently positioned close to local schools & shops and within easy access to the train station and Guildford town centre



Description

A spacious and beautifully presented four bedroom home located within easy access of Guildford town centre.

The property is tucked away from the road and the ground floor accommodation comprises an entrance hall, a large lounge overlooking the rear garden, a modern kitchen with open plan dining room and a cloakroom.

On the first floor there are three double bedrooms, a single bedroom and family bathroom with shower.

The easy to maintain rear garden is fully enclosed, providing a private patio area and the rest of the garden laid to lawn.

There is driveway parking for 2 cars and a garage offering an ideal space for storage.

Chilworth is a highly popular village South of Guildford town centre within moments of the Surrey Hills. It offers easy access to beautiful walks and cycles and has popular schools within the village.



| Energy Efficiency Rating | | Current | Potential |
|---|--|-------------------------|-----------|
| Very energy efficient - lower running costs | | | |
| (92 plus) A | | | |
| (81-91) B | | | |
| (69-80) C | | | |
| (55-68) D | | | |
| (39-54) E | | | |
| (21-38) F | | | |
| (1-20) G | | | |
| Not energy efficient - higher running costs | | | |
| England & Wales | | EU Directive 2002/91/EC | 83 |

| Environmental Impact (CO ₂) Rating | | Current | Potential |
|---|--|-------------------------|-----------|
| Very environmentally friendly - lower CO ₂ emissions | | | |
| (92 plus) A | | | |
| (81-91) B | | | |
| (69-80) C | | | |
| (55-68) D | | | |
| (39-54) E | | | |
| (21-38) F | | | |
| (1-20) G | | | |
| Not environmentally friendly - higher CO ₂ emissions | | | |
| England & Wales | | EU Directive 2002/91/EC | |

