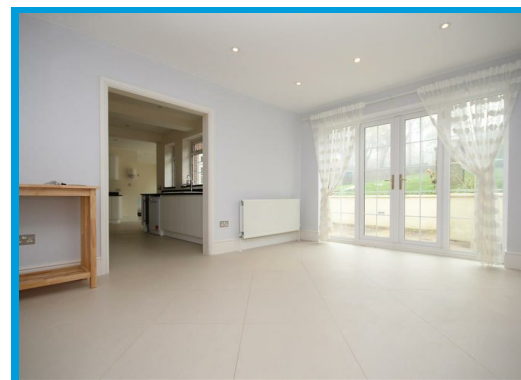




Manor Way, Guildford, Surrey GU2 7RP

£4,995 PCM

A beautifully presented five bedroom detached house positioned in a highly sought after location within easy access to Guildford mainline station and within the catchment of top local schools.



# Description

A well presented five bedroom detached house situated within a very sought-after location of Guildford and within very close proximity to the A3, Guildford town centre and mainline train station.

The property has been finished off to a very high standard throughout, and comprises

five double bedrooms, four bathrooms (3 en-suites), a large open planned kitchen/diner with two separate reception rooms, downstairs W.C, and a utility room.

Further benefits include gas central heating, double glazing, french doors leading to a private enclosed rear garden (approx 150'), garage with electric doors, off road parking for multiple cars, and a gas fire place.

