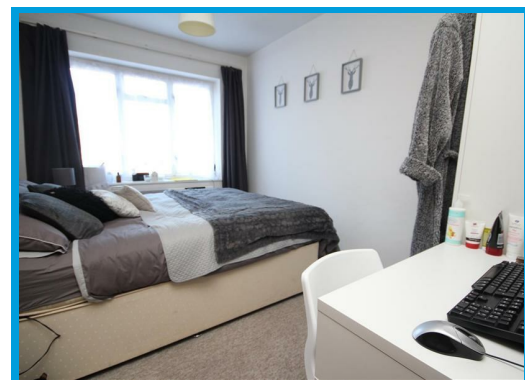
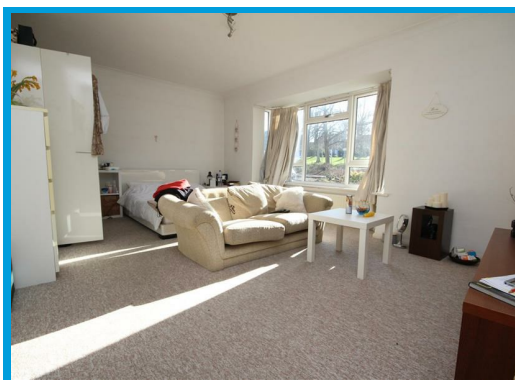




Dene Road, Guildford Surrey, GU1 4DB

£1,550 PCM

A spacious and well presented two double bedroom apartment located in the heart of the town centre, within moments walk to Guildford High Street with parking and garage.



Description

Positioned in a quiet yet central location, this two bedroom apartment offers spacious accommodation throughout.

The property benefits from having its own private entrance and has an entrance hall leading to all rooms of the apartment.

The accommodation is conveniently arranged and comprises a kitchen with breakfast bar, a very large lounge, a bathroom with shower and two double bedrooms. With large double glazed windows throughout, the apartment is light and airy.

Further benefits include off street parking and a garage.

