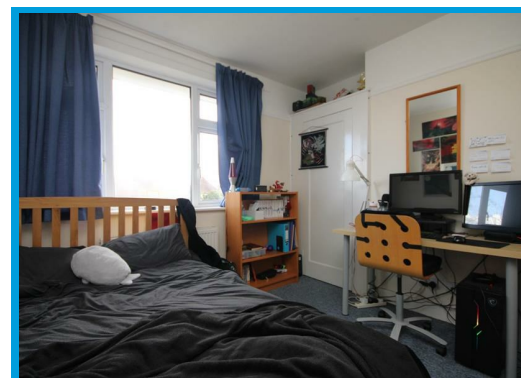
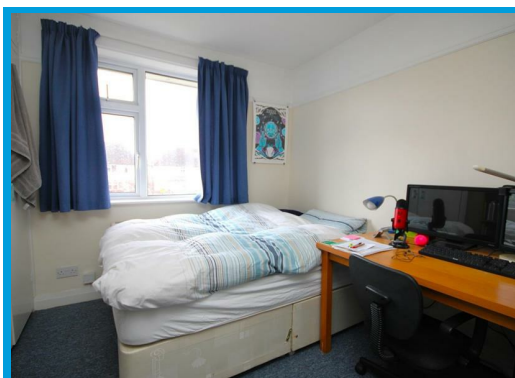
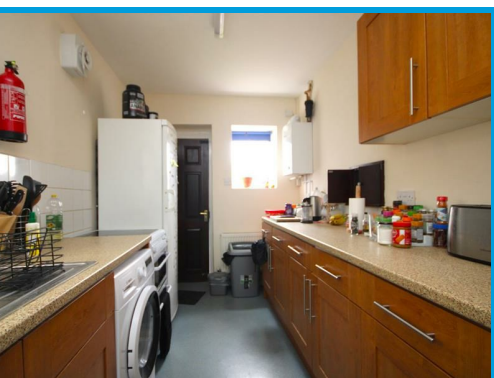




Woodbridge Hill Gardens, Guildford, Surrey GU2 8AR

£2,600 PCM

A spacious and well presented four bedroom house ideal for students and professional sharers. Located within easy access of Surrey University and Guildford town centre.



Description

Located in a quiet cul-de-sac this spacious four bedroom semi detached property offers off street parking and private enclosed garden. On the ground floor the property comprises a large reception room, galley style kitchen and a double bedroom. On the first floor the property boasts three bedrooms and a shower room. This property is ideal for students or professional sharers, further benefits include a gardener paid for by the landlord.

