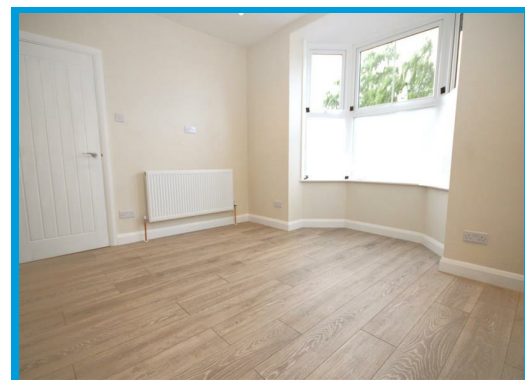
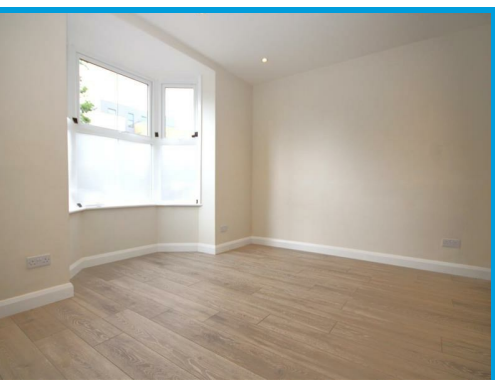




Woodbridge Road, Guildford, GU1 4RF

£1,700 PCM

****AVAILABLE NOW**** ****RECENTLY REFURBISHED THROUGHOUT**** Located in the heart of Guildford town centre, this stunning two bedroom apartment has been recently refurbished throughout with off street allocated parking.



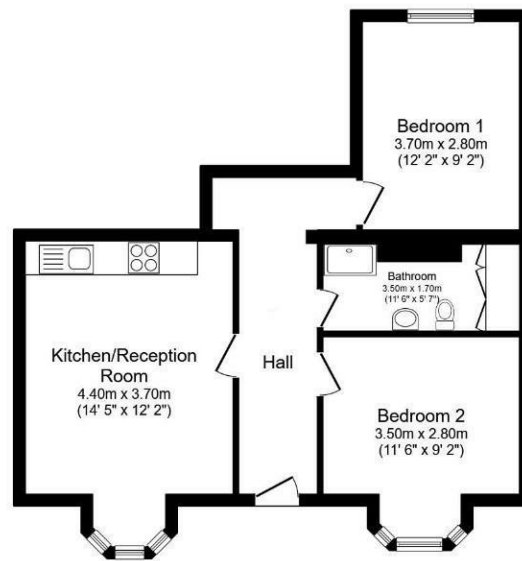
Description

This stunning apartment, located in the heart of Guildford has been recently refurbished throughout, ready to move into immediately.

The property comprises of it's own entrance, with a bright and airy open plan reception room and kitchen with all newly fitted integrated appliances.

Further benefits are two double bedrooms, a large bathroom with utility space and allocated off street parking.

The flat is moments from Guildford town centre and walking distance to the mainline station.



Floor Plan
Floor area 55.7 m² (600 sq.ft.)

TOTAL: 55.7 m² (600 sq.ft.)

This floor plan is for illustrative purposes only. It is not drawn to scale. Any measurements, floor areas (including any total floor area), openings and orientations are approximate. No details are guaranteed, they cannot be relied upon for any purpose and do not form any part of any agreement. No liability is taken for any error, omission or misstatement. A party must rely upon its own inspection(s). Powered by www.Propertybox.io



Energy Efficiency Rating		Current	Potential
Very energy efficient - lower running costs			
(92 plus) A			
(81-91) B			
(69-80) C			
(55-68) D			
(39-54) E			
(21-38) F			
1-10 G			
Not energy efficient - higher running costs			
England & Wales		76	50
EU Directive 2002/91/EC			

Environmental Impact (CO ₂) Rating		Current	Potential
Very environmentally friendly - lower CO ₂ emissions			
(92 plus) A			
(81-91) B			
(69-80) C			
(55-68) D			
(39-54) E			
(21-38) F			
(1-20) G			
Not environmentally friendly - higher CO ₂ emissions			
England & Wales			
EU Directive 2002/91/EC			

