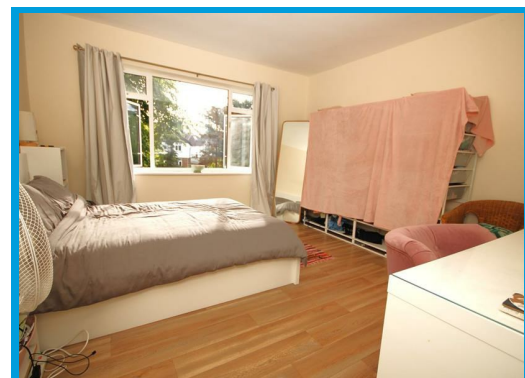
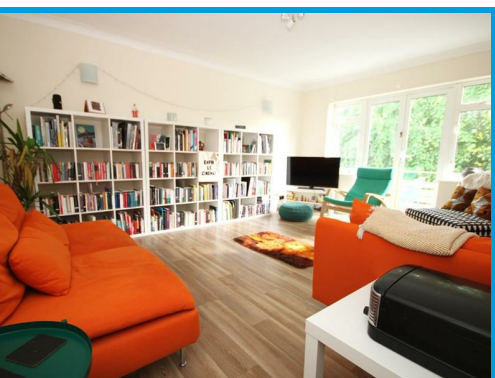




Lindfield Gardens, Guildford, GU1 1TP

£1,700 PCM

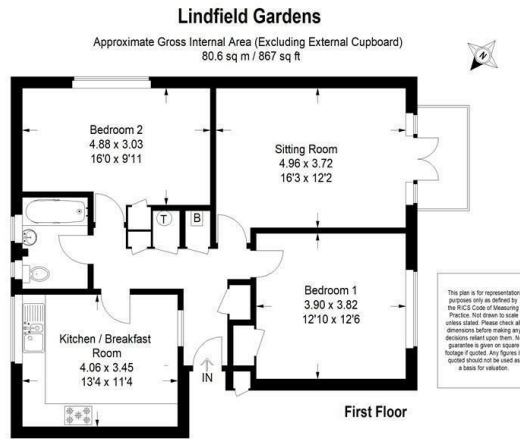
A bright and spacious unfurnished two double bedroom apartment positioned on the first floor which is well presented throughout, located moments from Stoke Park, Guildford town centre.



Description

This stunning two double bedroom apartment offers exceptionally spacious accommodation throughout and is located within a short walk to Guildford's Stoke park and town centre. This bright and spacious first floor apartment boasts a large kitchen that has adequate space for breakfast/dining table, it offers a good range of units and appliance storage space. There is a large reception room with twin doors that open up to a private balcony. Further benefits are two good sized double bedrooms with the master having built in storage and bathroom with separate cloakroom. The property further features ample parking and communal garden.

Outside



Energy Efficiency Rating		Current	Potential
Very energy efficient - lower running costs	(92 plus) A		
(81-91) B			
(69-80) C			
(55-68) D			
(39-54) E			
(21-38) F			
Not energy efficient - higher running costs	G		
England & Wales		68	76
	EU Directive 2002/91/EC		

Environmental Impact (CO ₂) Rating		Current	Potential
Very environmentally friendly - lower CO ₂ emissions	(92 plus) A		
(81-91) B			
(69-80) C			
(55-68) D			
(39-54) E			
(21-38) F			
Not environmentally friendly - higher CO ₂ emissions	G		
England & Wales			
	EU Directive 2002/91/EC		

