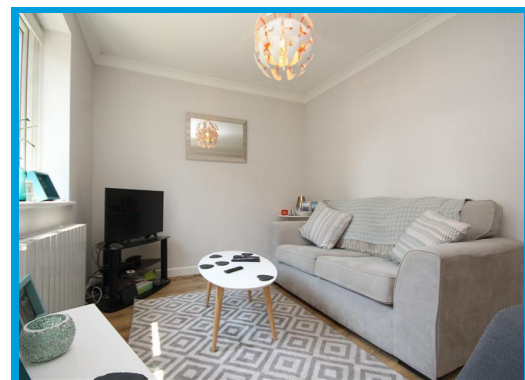
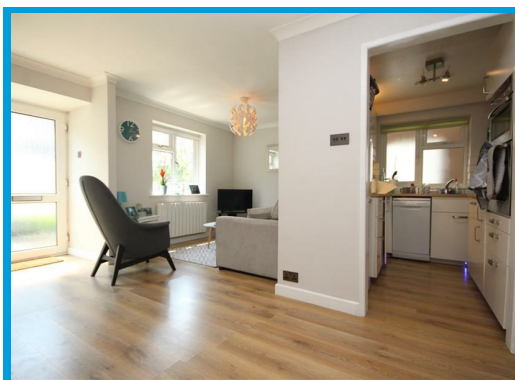
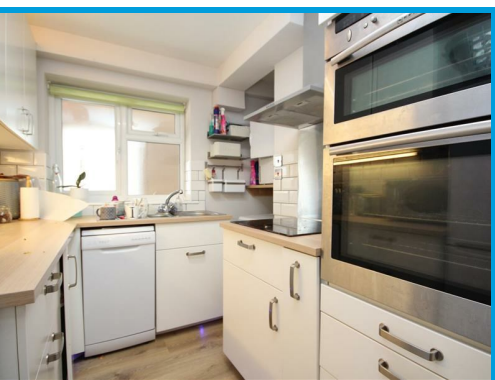




Drummond Court, Drummond Road Guildford, Surrey GU1 4NT

£1,700 PCM

Located in the heart of Guildford town centre within a short distance to the mainline station, this stunning two double bedroom ground floor maisonette has been recently refurbished to an extremely high standard throughout and has its own private garden.



Description

This stunning two double bedroom ground floor maisonette has been recently refurbished to an extremely high standard throughout and has its own private garden.

The property has its own entrance and the accommodation comprises a large, light and airy reception room, a modern kitchen with appliances, recently fitted bathroom suite with shower over bath, a double bedroom and the master bedroom with direct access to the private rear garden. The property further features allocated parking and is only a short distance to the Mainline station and Guildford town centre.



Energy Efficiency Rating		Current	Potential
Very energy efficient - lower running costs			
(92 plus) A			
(81-91) B			
(69-80) C			
(55-68) D		60	68
(39-54) E			
(21-38) F			
(1-20) G			
Not energy efficient - higher running costs			
England & Wales		EU Directive 2002/91/EC	

Environmental Impact (CO ₂) Rating		Current	Potential
Very environmentally friendly - lower CO ₂ emissions			
(92 plus) A			
(81-91) B			
(69-80) C			
(55-68) D			
(39-54) E			
(21-38) F			
(1-20) G			
Not environmentally friendly - higher CO ₂ emissions			
England & Wales		EU Directive 2002/91/EC	

