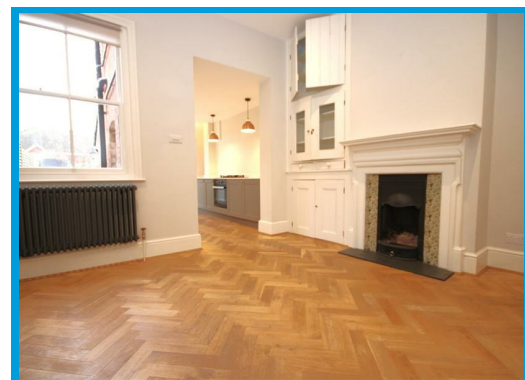




Cooper Road, Guildford, Surrey GU1 3LY

£2,700 PCM

Arranged over three floors and situated within the catchment of highly popular schools, this three bedroom house offers stunning accommodation within a short walk to Guildford High Street.



## Description

Located in one of Guildfords most sought after locations, this stunning and deceptively spacious three bedroom family home offers beautifully presented accommodation within the catchment area of top local schools and within moments walk to Guildford High Street.

Arranged over three floors, the ground floor accommodation comprises a lounge with feature fireplace, a separate dining room with beautiful wood block flooring, a high specification kitchen with doors to the rear garden and a WC.

The first floor boasts two double bedrooms, one with an en suite bathroom.

The top floor features the master bedroom with ensuite bathroom.

The property further features a private, enclosed rear garden.

