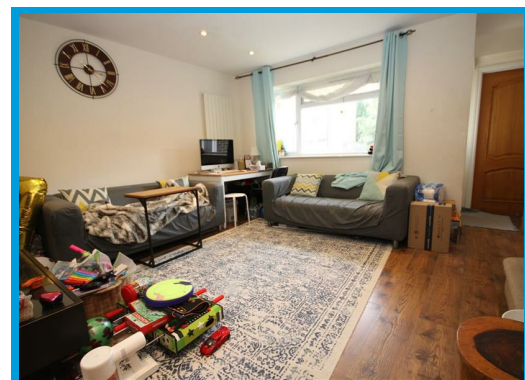
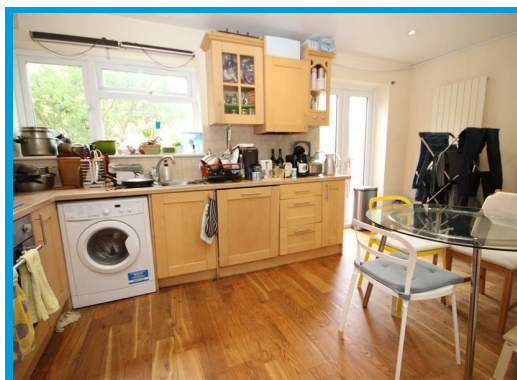
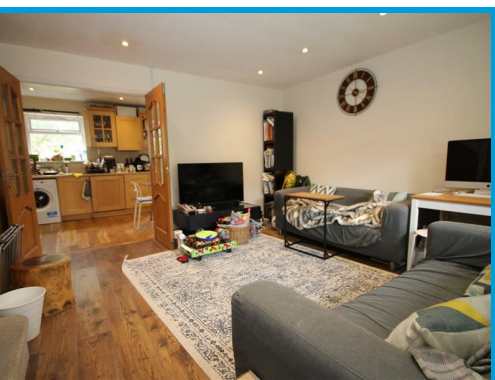




Guildford Park Avenue, Guildford, GU2 7NJ

£2,400 PCM

Located in a prime position for Surrey University, Guildford mainline train station and Guildford town centre, this three bedroom house features a bathroom, separate shower room and off street parking.



Description

Positioned at the end of the terrace in a highly popular development, this three bedroom house features wood flooring throughout and is only moments from Guildford mainline station.

The ground floor accommodation comprises a light and airy lounge, a shower room, and a kitchen diner with doors to the rear garden.

The first floor comprises two double bedrooms, a large single bedroom and a bathroom with shower.

The property further features off street parking, a rear garden with patio and side access to the rear of the property.

