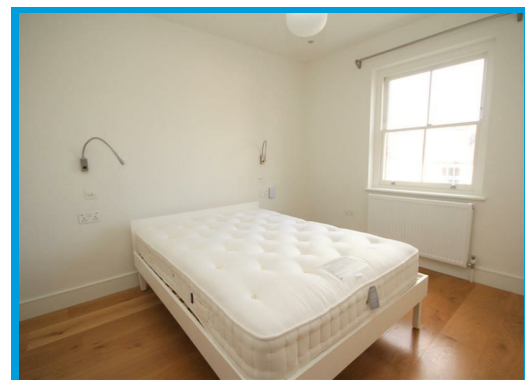
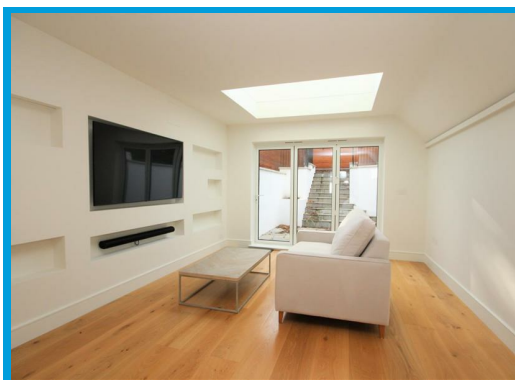
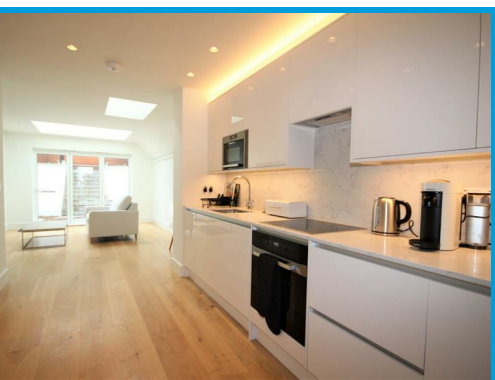




Addison Road, Guildford, Surrey GU1 3QQ

£2,100 PCM

A recently refurbished two bedroom house finished to an extremely high level located in the popular Charlottesville area, only a short walk to Guildford town centre.



Description

This recently refurbished character house in a popular area in the heart of Guildford. The property has been refurbished to an extremely high standard throughout boasts a modern fitted kitchen, downstairs WC and open plan lounge with a large skylight to more light to this beautiful home. Up the newly designed staircase there's two double bedrooms both with built in storage and mounted TV's, a modern family bathroom and a recently converted loft with an automatic loft hatch. Further benefits include bi-fold doors to the contemporary designed private rear garden, only walking distance from Guildford town centre.



Energy Efficiency Rating		Current	Potential
Very energy efficient - lower running costs			
(92 plus) A			
(81-91) B			
(69-80) C			
(55-68) D			
(39-54) E			
(21-38) F			
1-20 G			
Not energy efficient - higher running costs			
England & Wales		EU Directive 2002/91/EC	

Environmental Impact (CO ₂) Rating		Current	Potential
Very environmentally friendly - lower CO ₂ emissions			
(92 plus) A			
(81-91) B			
(69-80) C			
(55-68) D			
(39-54) E			
(21-38) F			
1-20 G			
Not environmentally friendly - higher CO ₂ emissions			
England & Wales		EU Directive 2002/91/EC	

