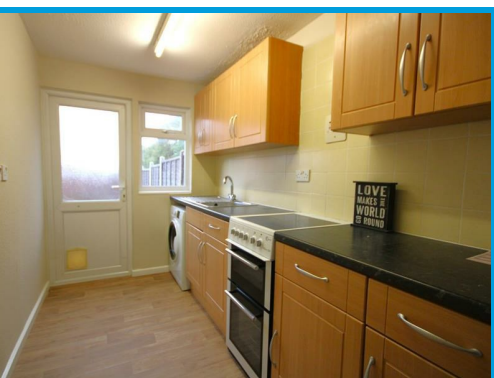




Rowan Close, Guildford Surrey, GU1 1PW

£1,850 PCM

A recently refurbished three bedroom family home located in a quiet residential area, with access to local amenities and good transport links.



Description

Located within a quiet residential location, this three bedroom house recently undergone complete redecoration throughout.

The property is positioned on a small green and is accessed through a porch. The entrance hall leads to a lounge with patio doors to the garden, a dining room leading through to the kitchen and a downstairs cloakroom.

Upstairs there are three bedrooms, two of which benefit from large built in wardrobes and all three are complimented by a bathroom with shower.

The property has lots of built in storage throughout and further features a panel fence enclosed garden with a good size patio area.

