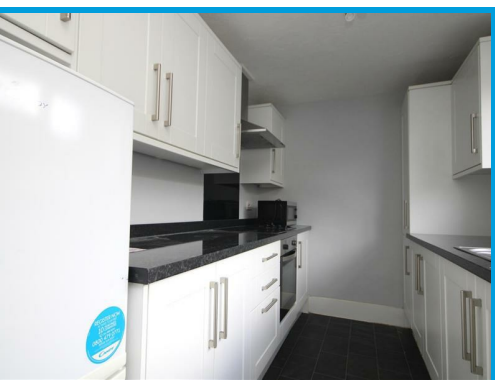




Grange Road, Guildford Surrey, GU2 9QP

£1,950 PCM

A recently refurbished three bedroom house situated close to local amenities and good transport links to Guildford town centre. Enclosed garden and off street parking.



Description

Located close to local shops and amenities and within easy A3 and town centre access, this three/ four bedroom house offers spacious accommodation throughout and has been recently completely re-decorated and re-carpeted throughout.

The property comprises an entrance hall leading to a modern kitchen with appliances, a large lounge with doors to the garden, a dining room/ bedroom 4 and a cloakroom.

Upstairs the property has three double bedrooms and a bathroom with shower.

The property further features off street parking and a garden.

