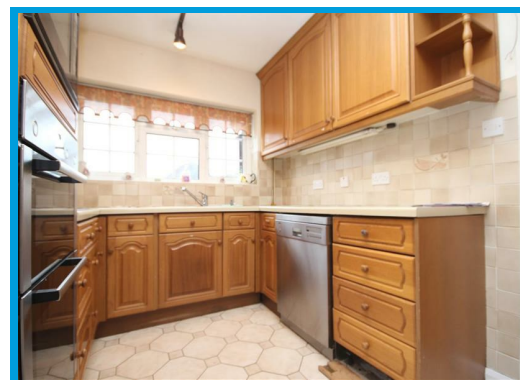
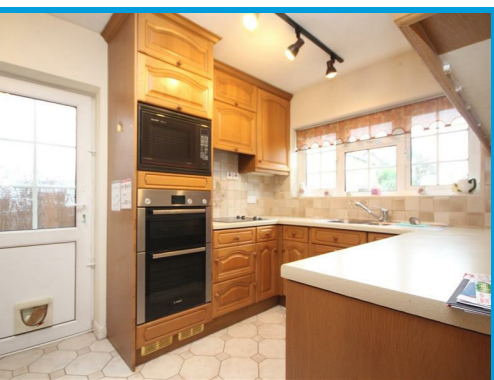




Bridgehill Close, Guildford, Surrey GU2 8BA

£2,500 PCM

A spacious four bedroom STUDENT property located moment away from Surrey University and the centre of Guildford.



Description

A well presented four double bedroom detached house situated within easy access to Surrey University and walking distance to the town centre. The accommodation comprises; an entrance hall, downstairs bedroom, fully fitted kitchen, reception room, dining room. Upstairs there are three double bedrooms, en-suite shower room to the master and a family bathroom. Other benefits include double glazing, gas central heating, driveway providing off road parking, garage & enclosed rear garden.

