



158 Hinckley Road, Nuneaton

Nuneaton

£675,000





## 158 Hinckley Road

Nuneaton, Nuneaton

Stunning detached property with brand-new kitchen, extensive and superb garden plot. Generous family accommodation having four bedrooms, three reception rooms on this most desirable thoroughfare.

Council Tax band: D

Tenure: Freehold

EPC Energy Efficiency Rating: D

EPC Environmental Impact Rating: E

- ATTRACTIVE DOUBLE FRONTED CHARACTER DETACHED
- BEAUTIFULLY PRESENTED THROUGHOUT
- STUNNING BRAND NEW OPEN PLAN KITCHEN DINING
- FOUR GENEROUS BEDROOMS WITH EN-SUITE TO MAIN
- IMPRESSIVE GARDEN RECENTLY LANDSCAPED
- EXTENSIVE PLOT TO BOTH FRONT & REAR
- DRIVEWAY WITH PARKING FOR NUMEROUS VEHICLES
- BEAUTIFUL SITTING ROOM WITH LOG BURNER & VAULTED CEILING

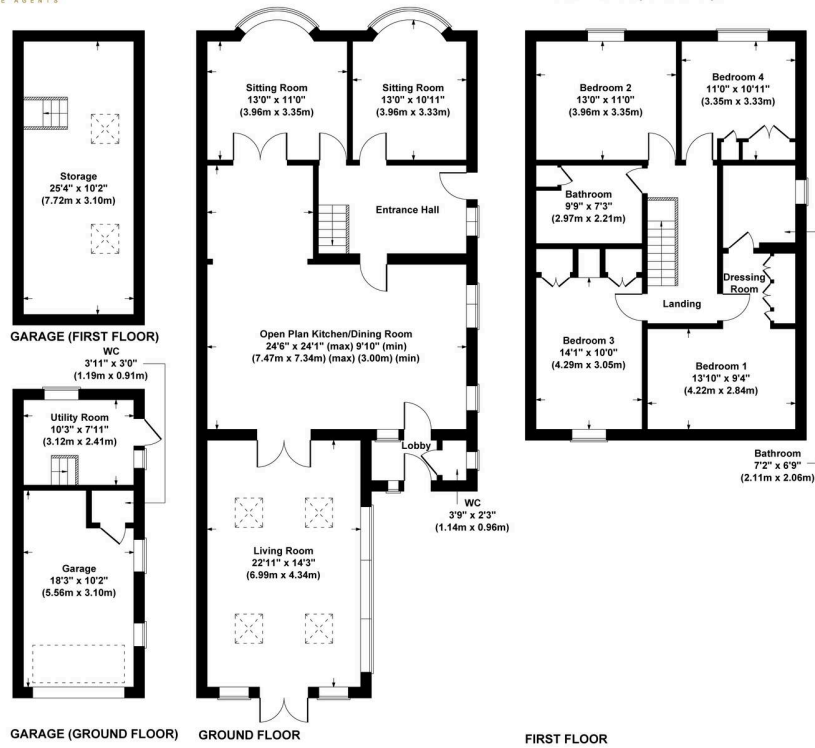


## Hinckley Road

Approximate Area = 2141 sq ft / 198.9 sq m

Garage = 533 sq ft / 49.5 sq m

Total = 2674 sq ft / 248.4 sq m



Not to Scale. Produced by The Plan Portal 2025

For Illustrative Purposes Only.







## Carters Estate Agents

66 St. Nicolas Park Drive, Nuneaton - CV11 6DJ

02476 388 863 • [info@cartersestateagents.co.uk](mailto:info@cartersestateagents.co.uk) • [www.cartersestateagents.co.uk/](http://www.cartersestateagents.co.uk/)