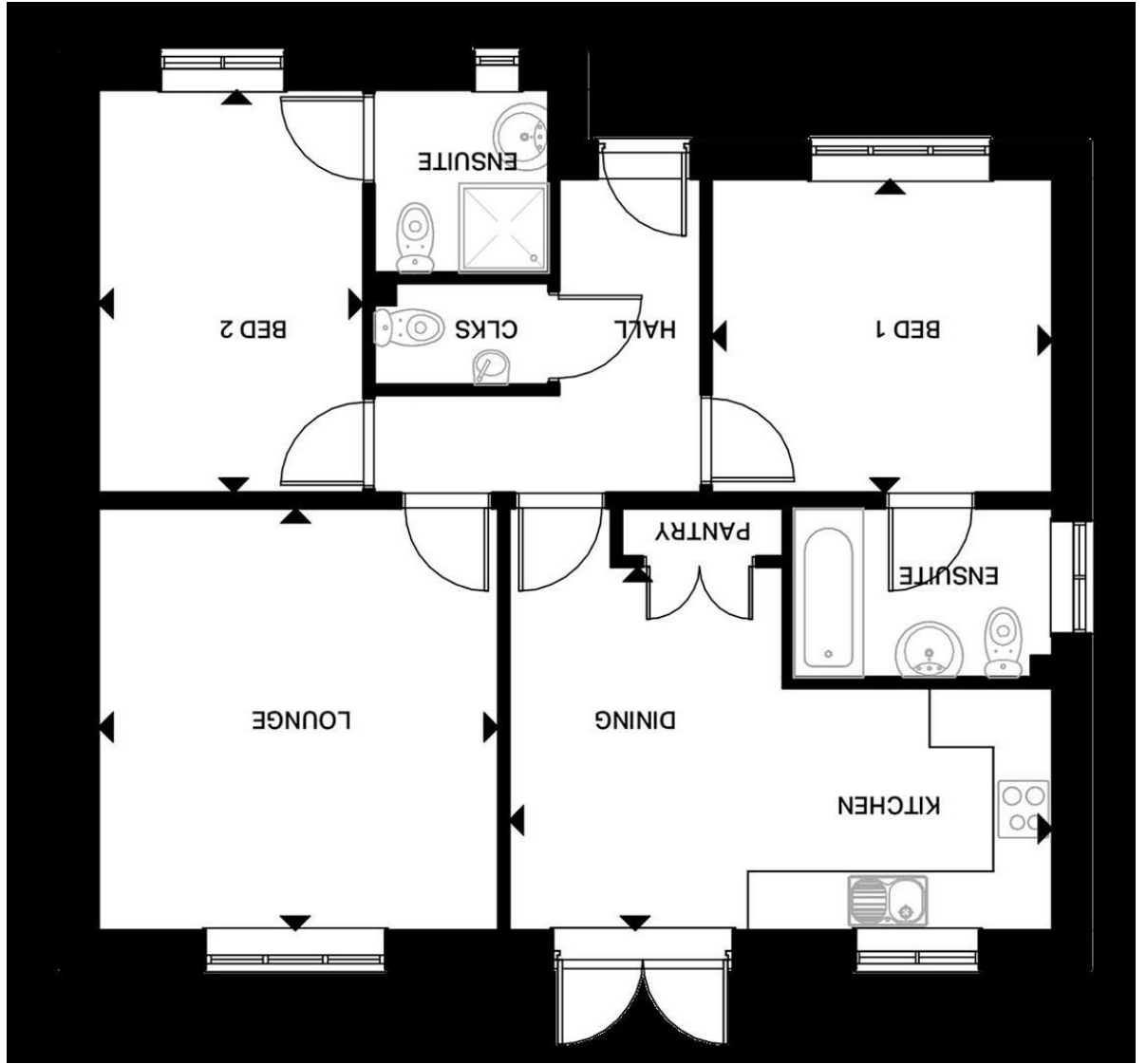


These particulars, whilst believed to be accurate are set out as a general outline only for guidance and do not constitute any part of an offer or contract. Intending purchasers should not rely on them as statements of representation of fact, but must satisfy themselves, whilst believed to be accurate as to their accuracy. No person in this firm's employment has the authority to make or give any representation or warranty in respect of the property.

Please contact our Nuneaton Office on 02476 388863 if you wish to arrange a viewing appointment for this property or require further information.



Floor Plan

Energy Efficiency Rating	
Current	Potential
A (92 plus)	A (92 plus)
B (81-91)	B (81-91)
C (69-80)	C (69-80)
D (55-68)	D (55-68)
E (39-54)	E (39-54)
F (21-38)	F (21-38)
G (1-20)	G (1-20)

Very energy efficient - lower running costs
 Not energy efficient - higher running costs

EU Directive 2002/91/EC
 England & Wales

Energy Efficiency Graph



Area Map



The Lydford McArthur Gardens
 Bedworth, CV12 0AD

£335,000



The Lydford McArthur Gardens

Bedworth, CV12 0AD

Introducing "The Lydford" - a charming 2-bedroom bungalow offering the epitome of modern living with a touch of luxury.

Take advantage of the exclusive Premier Buyers Package available on this plot, where Cartwright Homes is offering £10k to assist with moving costs or elevate your home with our interior upgrade options. The Premier Buyers Package ensures you have the flexibility to choose the best option to suit your needs.

Ideal for down-sizers or those who appreciate lateral living, this spacious bungalow welcomes you with a well-designed layout that maximises comfort and convenience.

Step into the hallway and be greeted by the heart of the home - the kitchen/dining area. Featuring a stunning integrated kitchen and convenient pantry storage, this space is perfect for culinary enthusiasts. French doors lead seamlessly to the rear garden, inviting in natural light and creating a seamless indoor-outdoor flow.

Additionally, the home boasts a separate living room and WC, providing practicality and comfort for everyday living.

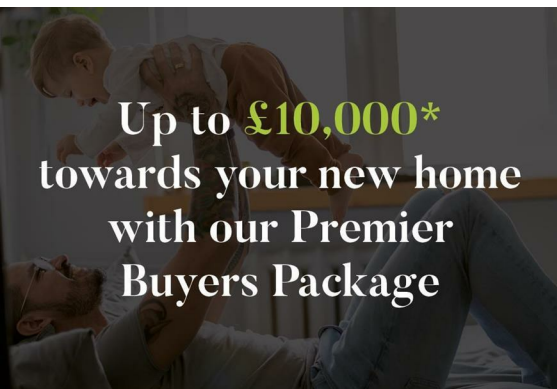
Both double bedrooms are



elegantly appointed at the front of the home, offering privacy and tranquility. Each bedroom is complemented by its own ensuite, with the master bedroom featuring the added luxury of a bath for relaxation.

Externally, enjoy the beauty of a landscaped front garden and the convenience of a private drive adjacent to the property. The enclosed rear garden offers a serene retreat for outdoor relaxation and entertaining.

Don't miss out on the opportunity to make "The Lydford" your new home.



Up to **£10,000*** towards your new home with our Premier Buyers Package