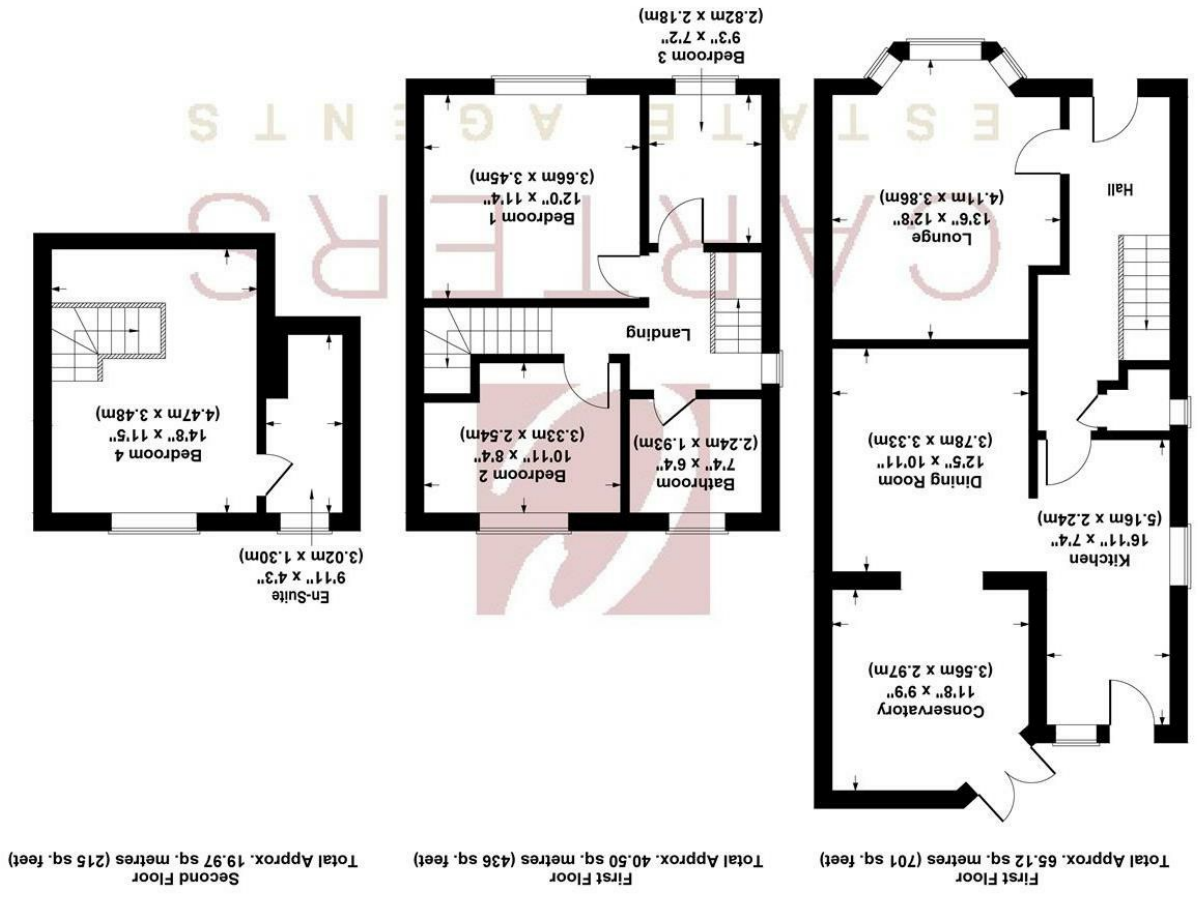


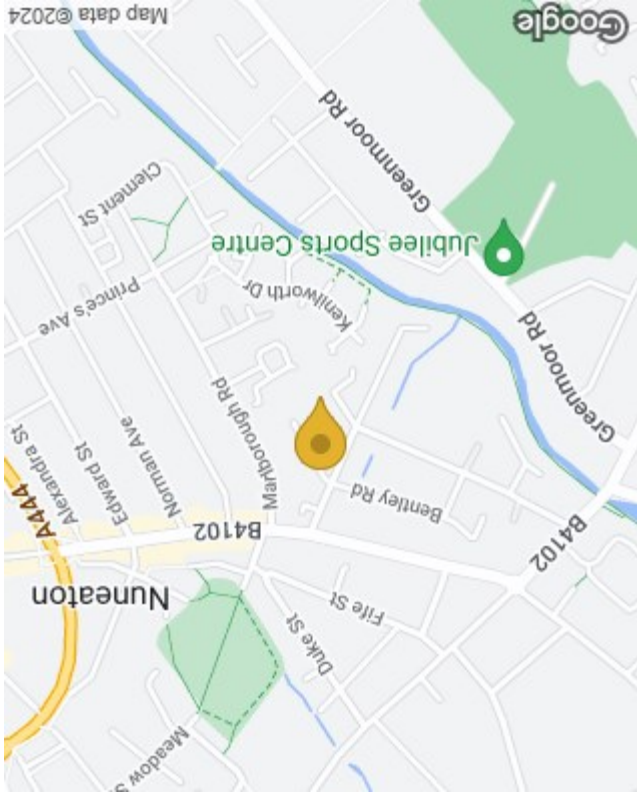
These particulars, whilst believed to be accurate are set out as a general outline only for guidance and do not constitute any part of an offer or contract. Intending purchasers should not rely on them as statements of representation of fact, but must satisfy themselves, whilst believed to be accurate as to their accuracy. No person in this firm's employment has the authority to make or give any representation or warranty in respect of the property.

Please contact our Nuneaton Office on 02476 388863 if you wish to arrange a viewing appointment for this property or require further information.

Not to Scale. Produced by The Plan Portal 2024  
 For Illustrative Purposes Only.

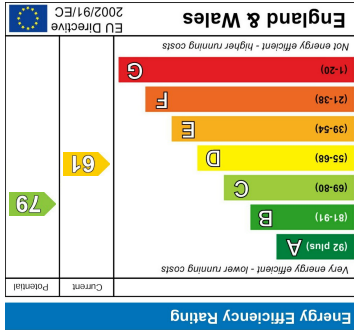


Floor Plan



Area Map

Energy Efficiency Graph



16 Chandos Street  
 Nuneaton, CV11 5LS  
 £260,000



16 Chandos Street

Nuneaton, CV11 5LS

**\*\*FOUR  
BEDROOMS\*\*EXTENDED\*\*CLOSE  
TO TOWN\*\***

Carters proudly presents this extended and well-presented traditional semi-detached family home, conveniently located within walking distance to Nuneaton's Town Centre, offering easy access to all amenities, bus and train stations. Boasting a range of features, including central heating, double glazing, an open-plan kitchen/diner/conservatory, a loft conversion bedroom with an en-suite, a re-fitted bathroom, and off-road parking, this property offers a comfortable and modern living experience.

The well-proportioned accommodation begins with a welcoming hallway, leading to a separate lounge with a bay window. The open-plan kitchen/diner/conservatory, adorned with French-style doors leading to the rear garden, provides a spacious and inviting area for dining and entertaining. The first floor accommodates three bedrooms and a family bathroom with modern suite. The second floor reveals a bedroom with an en-suite.

Outside, the front of the property features a Tarmac hard standing providing off-road parking. The rear garden has a paved patio



leading to a lawn bordered by mature shrubs and plants, creating a charming outdoor space.

This property, with its blend of traditional charm and modern conveniences, is a perfect family home. Viewings are highly recommended to fully appreciate the thoughtful design and convenient location.

