



Plot 2 Hillside Drive  
Nuneaton, CV10 0LF

Guide Price £275,000



COUNCIL  
TAX  
BAND

Floor Plan

Hillside Drive



Not to Scale. Produced by The Plan Portal 2023  
For Illustrative Purposes Only.

Please contact our Nuneaton Office on 02476 388863

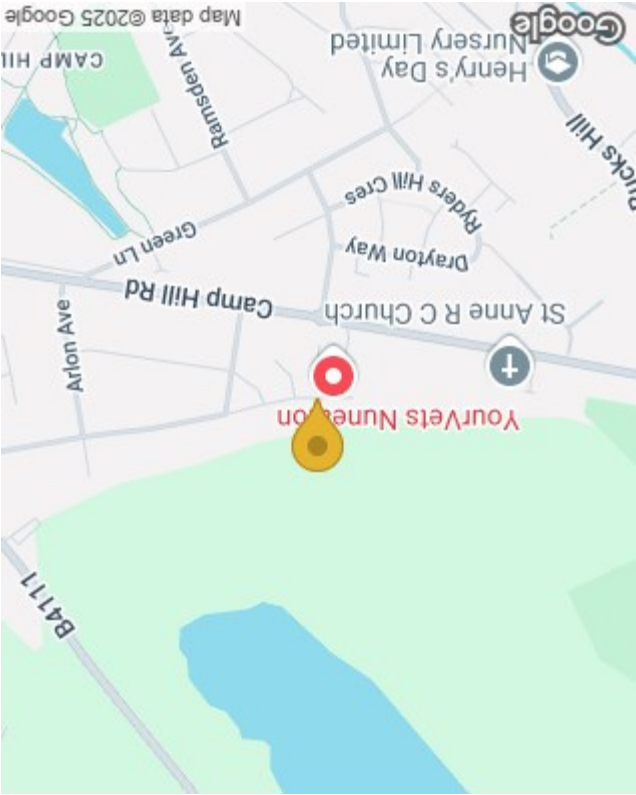
if you wish to arrange a viewing appointment for this property or require further information.

These particulars, whilst believed to be accurate are set out as a general outline only for guidance and do not constitute any part of an offer or contract. Intending purchasers should not rely on them as statements of representation of fact, but must satisfy themselves by inspection or otherwise as to their accuracy. No person in this firm's employment has the authority to make or give any representation or warranty in respect of the property.

66 St Nicolas Park Drive, Nuneaton, Warwickshire, CV11 6DJ  
Tel: 02476 388863 Email: info@cartersstatagents.co.uk www.cartersstatagents.co.uk

England & Wales	
EU Directive 2002/91/EC	
Very energy efficient - lower running costs	A (92 plus)
	B (81-91)
	C (69-80)
	D (55-68)
	E (39-54)
	F (21-38)
Not energy efficient - higher running costs	G (1-20)
Current	Future

Energy Efficiency Graph



Area Map

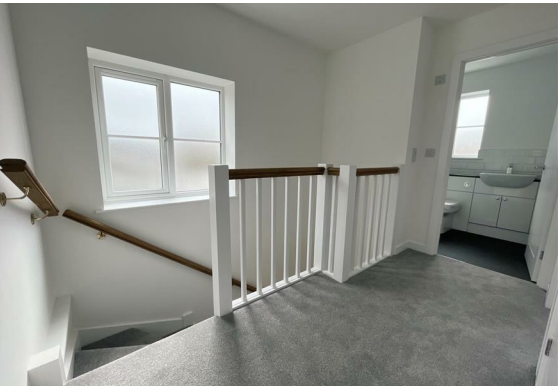


Plot 2 Hillside Drive  
Nuneaton, CV10 0LF

An exclusive development of superbly designed detached new homes located in a desirable location with convenient access to the Nuneaton town centre and within easy reach of major rail and road network links. These generous well-planned properties offer well thought out living accommodation, come with a 10 year new build warranty and are finished to a high specification throughout. Benefitting from fantastic views to the rear of the properties with viewing highly advised to appreciate. The property is finished to a high standard and is fully carpeted and with Amtico flooring, along with upgraded power showers and integrated appliances. Externally there are also outside taps and electric points.

This plot is ‘show home ready’ and available to purchase and move into immediately. The other plots on the development are also available, with the developers offering significant customisation on fixtures and fittings.

A luxury collection of three bedroom detached new build homes, offering contemporary open plan living to the ground floor and briefly comprising entrance hallway leading to separate WC/guests cloak open plan kitchen/dining which has a range of wall and base units and



laminade worktops with breakfast bar, plus integrated appliances to include, fridge freezer, dishwasher and oven, there is space for a dining area with French doors to the garden. This follows on into living room to the front of the property. To the first floor are three generous bedrooms, bedroom one with access to en suite with vanity unit and mains shower, additionally there is a family bathroom and storage/ linen cupboard. Outside to the front is a block paved driveway proving off road parking for two vehicles and side access into rear garden which will have lawn and patio area to be installed.