





Extended modern Leech built semi detached villa located within sought after Head of Muir. A super family home the property lies a short walk from highly regarded Head of Muir Primary School. Occupying a prime plot the property enjoys the benefit of delightful private gardens complemented by a front driveway and integral garage. The sunny south facing enclosed rear garden has a paved patio, lawn and two timber garden storage sheds.

Professionally extended with all consents circa 1992 the property has a single storey rear extension providing a flexible TV room/home office which would suit a variety of uses and downstairs shower room. Further public rooms include a sitting room enjoying charming tree lined front views and separate dining room which has separate access to both the kitchen and sitting room. The lower accommodation is completed by a bright kitchen which is offered for sale with cooker, dishwasher and washing machine.

On the upper floor there are three well proportioned bedrooms all of which have fitted storage and a fully ceramic tiled shower room. Although now likely to benefit from upgrading the property has both gas central heating and double glazing. An excellent family home, early viewing is highly recommended in order to avoid disappointment.

Viewing

By appointment please through
Clyde Property Falkirk

01324 881777
falkirk@clydeproperty.co.uk

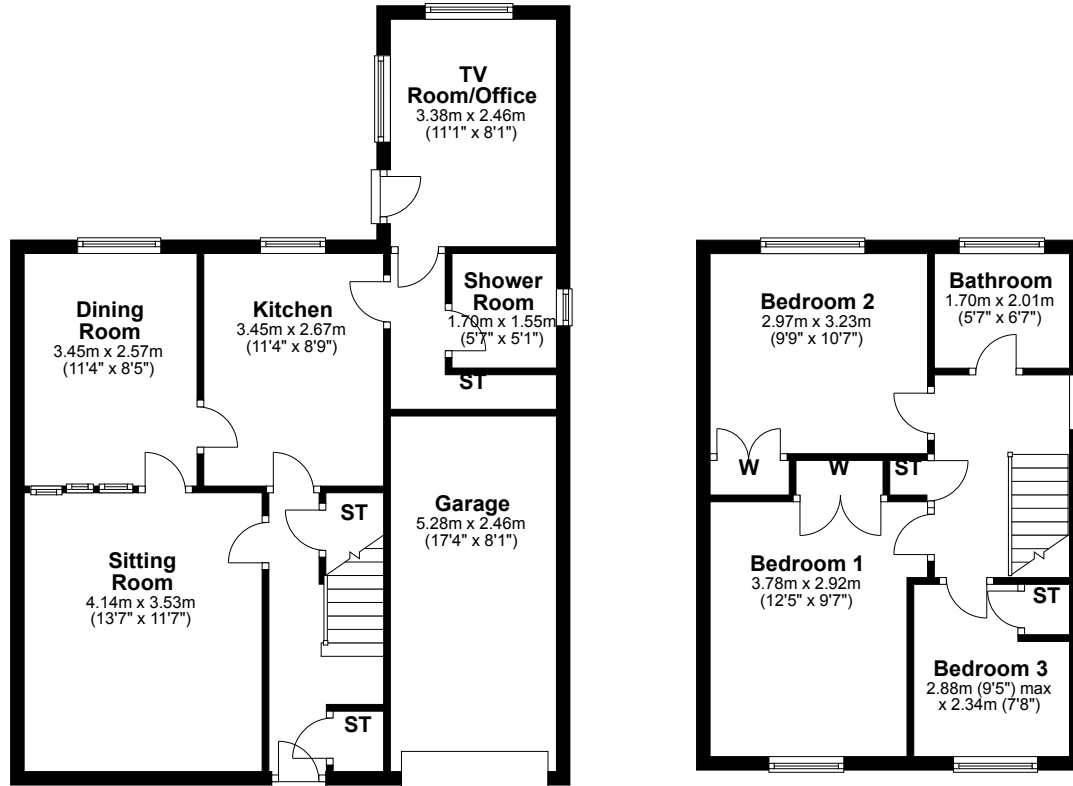
Price Offers Over £167,500

EER Rating Band D

Property Ref WH5032



Accommodation layout & measurements



Download our App:



Whilst this brochure has been prepared with care, it is not a report on the condition of the property. Its terms are not warranted and do not constitute an offer to sell. All area and room measurements are approximate only. Floorplans are for illustration only and may not be to scale. All measurements are taken from longest and widest points. Clyde Property exercise a policy of using recycled paper for all their printed material

Location

The popular village of Head of Muir offers local amenities including local convenience shopping and sought-after Head of Muir Primary School. The adjoining town of Denny offers a more extensive range of amenities including nearby Sainsbury's Supermarket. The property lies within easy reach of the major towns of Falkirk and Cumbernauld, and city of Stirling, which all provide main line rail links to the cities of Glasgow and Edinburgh. The surrounding road and motorway network proves popular with commuters seeking access to many central Scottish centres of business including Glasgow, Stirling, Falkirk, Fife, Grangemouth and Edinburgh.

For Satellite Navigation directions please enter the postcode: FK6 5LQ

 **clyde**
PROPERTY

24 Newmarket Street

Falkirk FK1 1JQ

T: 01324 881777

F: 01324 898777

e: falkirk@clydeproperty.co.uk

www.clydeproperty.co.uk

