

Deposit Alternative  
Available

cubitt  
& west

Price

£3,500 PCM

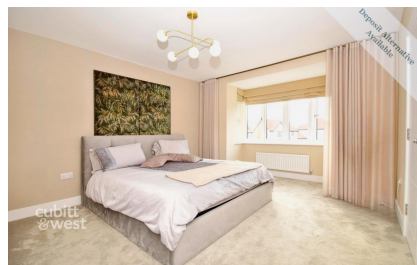
Fees Apply



Available 13/10/25

Oswald Norris Way,  
Crawley, RH11

cubitt & west  
Helping you move forwards



## Main Features

- Huge Garage
- Furnished
- Underfloor Heating On Both Floors
- Air-Conditioned Garden Room
- Utility Room With Separate Entrance
- Available ASAP!



Deposit required is £4,038.46  
- Council Tax Band N/A

Renting a property is a big commitment and we recommend that you visit the local authority website and these websites which offer helpful information and advice about letting

[www.gov.uk/government/publications/how-to-rent](http://www.gov.uk/government/publications/how-to-rent)

[www.gov.uk/private-renting](http://www.gov.uk/private-renting)

[www.cubittandwest.co.uk/renting/tenancy-fees-individuals/](http://www.cubittandwest.co.uk/renting/tenancy-fees-individuals/)

[www.gov.uk/green-deal-energy-saving-measures](http://www.gov.uk/green-deal-energy-saving-measures)

**Call Crawley 01293 544100 ■ [cubittandwest.co.uk](http://cubittandwest.co.uk)**

IMPORTANT INFORMATION: Please contact our Lettings Team who will confirm the total costs involved in renting this property. For clarification, we wish to inform the prospective tenant that we have prepared these details as a general guide. The agent has not carried out a detailed survey nor tested the services, appliances, or specific fittings (unless otherwise stated), and no warranty can be given as to their condition. All room measurements are taken at floor level. We strongly recommend that all the information which we provide about the property is verified by yourself and your advisers. The contents of this publication are © Cubitt & West, 2015. Cubitt & West is a trading name of Arun Estates Limited Registered in England No. 2597969

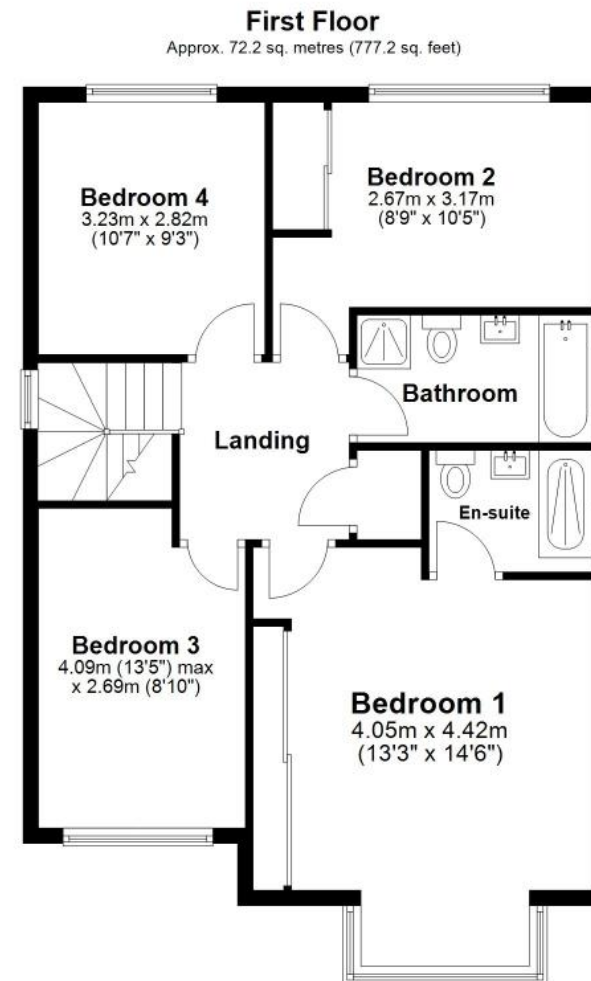
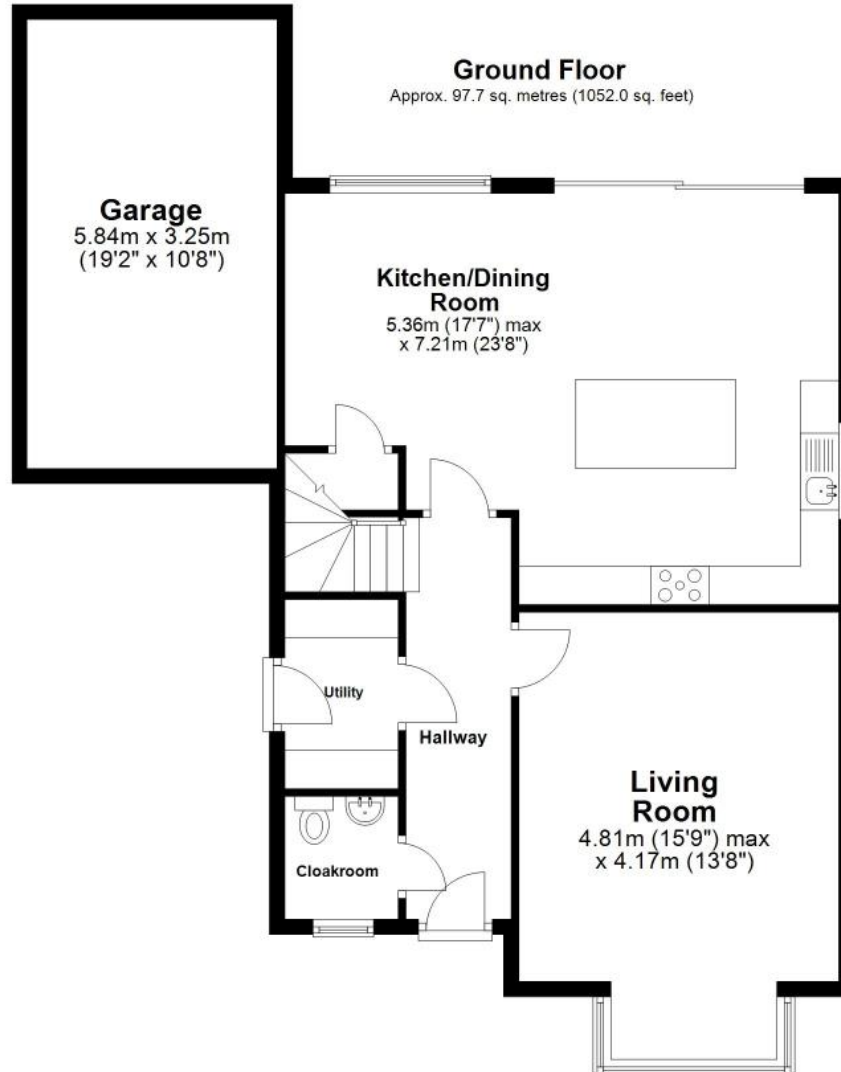
## Accommodation

- Living Room
- Kitchen/Dining Room
- Utility Room
- Cloakroom
- Garden Room
- Bedroom 1
- Bedroom 2
- Bedroom 3
- Bedroom 4
- Ensuite

## Family Bathroom

<b>EPC RATING</b>	<b>CURRENT:</b>	<b>POTENTIAL:</b>
	<b>B(85)</b>	<b>A(92)</b>





Total area: approx. 169.9 sq. metres (1829.3 sq. feet)