



1



1



1



C

DavidJames
the estate agent

Princess Close, Gedling, Nottingham, NG4 4EU

£750 Per Calendar Month

About This Property

A well-presented first floor, furnished flat. The property comprises an entrance hall with a useful storage cupboard, a bright and spacious lounge/dining room as well as a modern kitchen with an integrated oven, hob with extractor and a washing machine with the further addition of a freestanding dishwasher and fridge/freezer whilst the double bedroom is complemented by in-built wardrobes and a fantastic modern shower room with a 3-piece white suite. Beautifully presented throughout and an excellent location, close to frequent bus services, the stunning Gedling Country Park and both Gedling and Mapperley's amenities.

TENANCY DETAILS

Available From: NOW

Tenancy Term: Minimum 6 months

Furnishing: Furnished

EPC Rating: C

Council Band: A

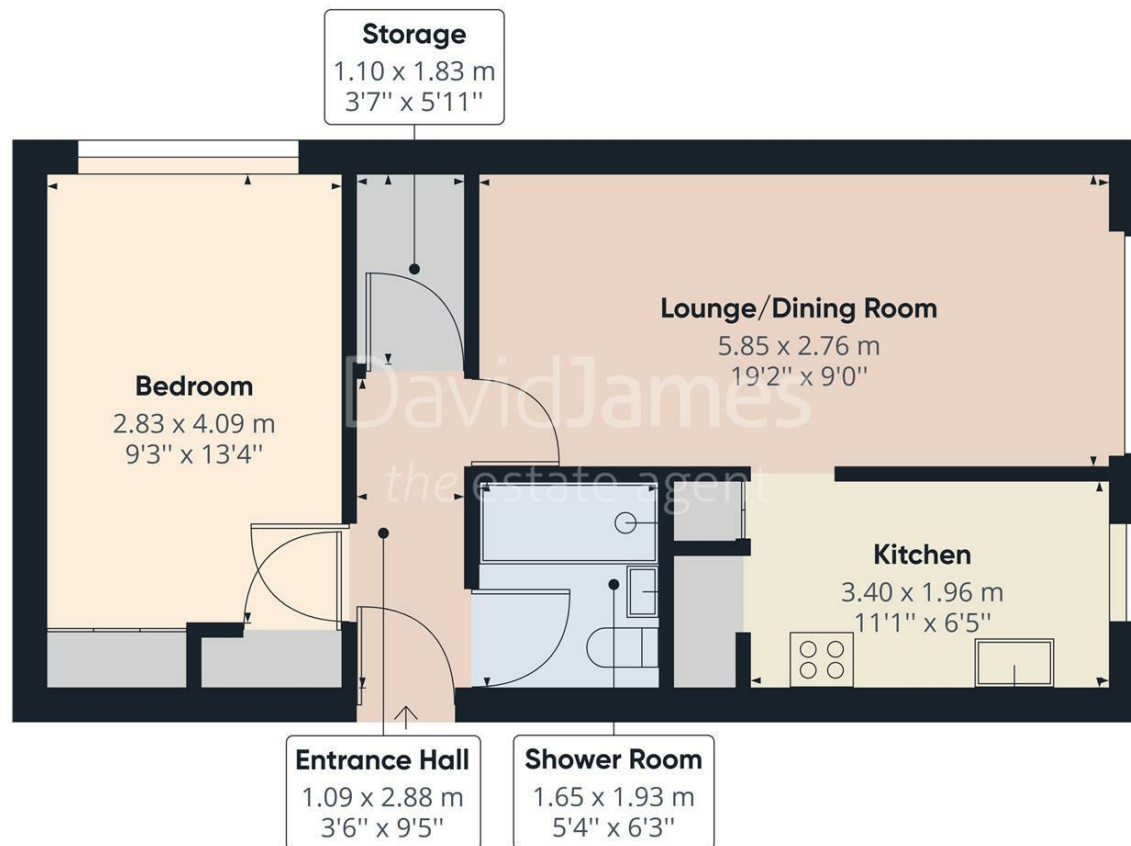
Pets: Not permitted



- Well presented first floor flat
- Double bedroom with in-built wardrobes
- Furnished
- Entrance hall with useful in-built storage cupboard
- Bright and spacious lounge/dining room
- Modern kitchen with integrated oven, hob with extractor and washing machine with freestanding dishwasher and fridge/freezer
- Superb modern shower room with electric shower
- UPVC double glazing, gas central heating
- Allocated parking
- Close to frequent bus services, the stunning Gedling Country Park and both Gedling and Mapperley's amenities.







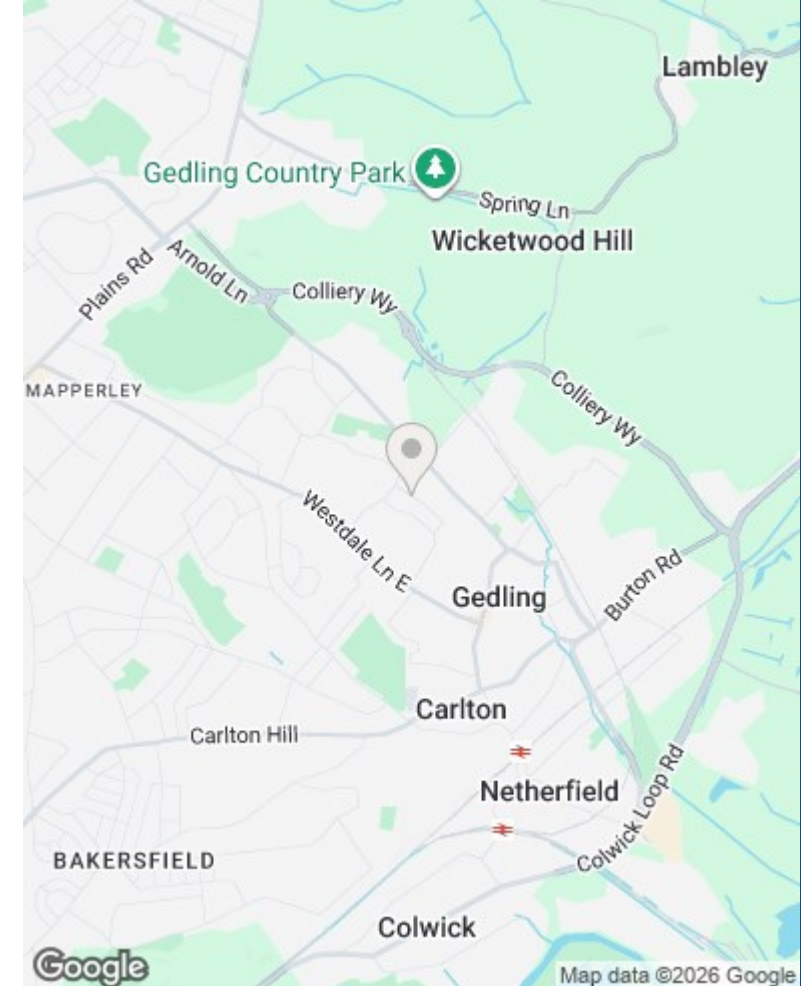
DavidJames
the estate agent

Approximate total area⁽¹⁾
47.25 m²
508.56 ft²

⁽¹⁾ Excluding balconies and terraces

While every attempt has been made to ensure accuracy, all measurements are approximate, not to scale. This floor plan is for illustrative purposes only.

GIRAFFE360



Council Tax Band: A
Gedling Borough Council

These particulars are produced in good faith, are set out as a general guide only and do not constitute any part of a contract. No person in the employment of David James Estate Agents Ltd has any authority to make any representation whatsoever in relation to the property. All services, together with electrical fittings or fitted appliances have NOT been tested. All the measurements given in the details are approximate. Floor plans are for illustrative purposes only and are not drawn to scale. The position and size of doors, windows, appliances and other features are approximate only. The photographs of this property have been taken with a 10mm wide-angle lens. No responsibility can be accepted for any loss or expense incurred in viewing. If you have a property to sell you may wish to take advantage of our free valuation service. David James Estate Agents have established professional relationships with third-party suppliers for the provision of services to Clients. As remuneration for this professional relationship, the agent receives referral commission from the third-party company. David James Estate Agents receives the following commission from each third party supplier on a per referral basis: W A Barnes Ltd: £60 including VAT. All Moves UK Ltd: 18% including VAT of the invoice total (£107 including VAT average). MoveWithUs Limited: £188 including VAT (average).

DavidJames
the estate agent

David James Estate Agents
45b Plains Road, Mapperley, Nottingham, NG3 5JU
t: 0115 962 4213 e: lettings@david-james.com

naea | propertymark
PROTECTED

**The Property
Ombudsman**