



DavidJames
the estate agent

Clementine Drive, Mapperley, Nottingham, NG3 5UX

£625 Per Calendar Month

About This Property

2 ROOMS AVAILABLE TO LET! A unique opportunity to rent a room in this substantial detached house, ideally located in a highly sought-after area. Perfect for working professionals, this stylish and spacious house-share offers comfortable and contemporary living with **BILLS INCLUDED** and rents ranging from £600pcm to £625pcm. There are 4 rooms available to choose from with two modern shared bath/shower rooms. The large and welcoming entrance hall includes a convenient cloakroom/WC, leading to a fantastic shared fitted kitchen complete with appliances and a bright, charming hexagonal dining area. A separate laundry room provides additional practicality, while underfloor heating to the ground floor ensures year-round comfort. Externally, there is a rear garden with a patio area, artificial lawn, and raised borders—perfect for relaxing outdoors. With UPVC double glazing, gas central heating, and close proximity to Mapperley's vibrant amenities, cafés, bars, and frequent transport links to Nottingham City Centre, this property offers both quality and convenience in an exceptional location.

TENANCY DETAILS

Available From: NOW

Tenancy Term: Minimum 6 months

Furnishing: Furnished

EPC Rating: C

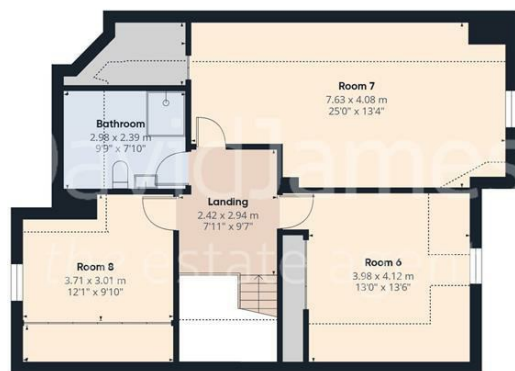
Pets: Not permitted

Bills: INCLUDED

- Two furnished rooms available to let in a shared detached house
- **BILLS INCLUDED** in the monthly rent (£600–£625pcm)
- Two shared bath/shower rooms
- Large entrance hall with cloakroom/WC
- Modern fitted kitchen with appliances
- Unique hexagonal dining area
- Separate laundry room for added convenience
- Underfloor heating to the ground floor and gas central heating throughout
- Rear garden with patio, artificial lawn, and raised borders
- Prime Mapperley location close to local shops, bars, cafés, and transport links to Nottingham City Centre







DavidJames
the estate agent

Approximate total area⁽¹⁾

249.1 m²
2682 ft²

Reduced headroom

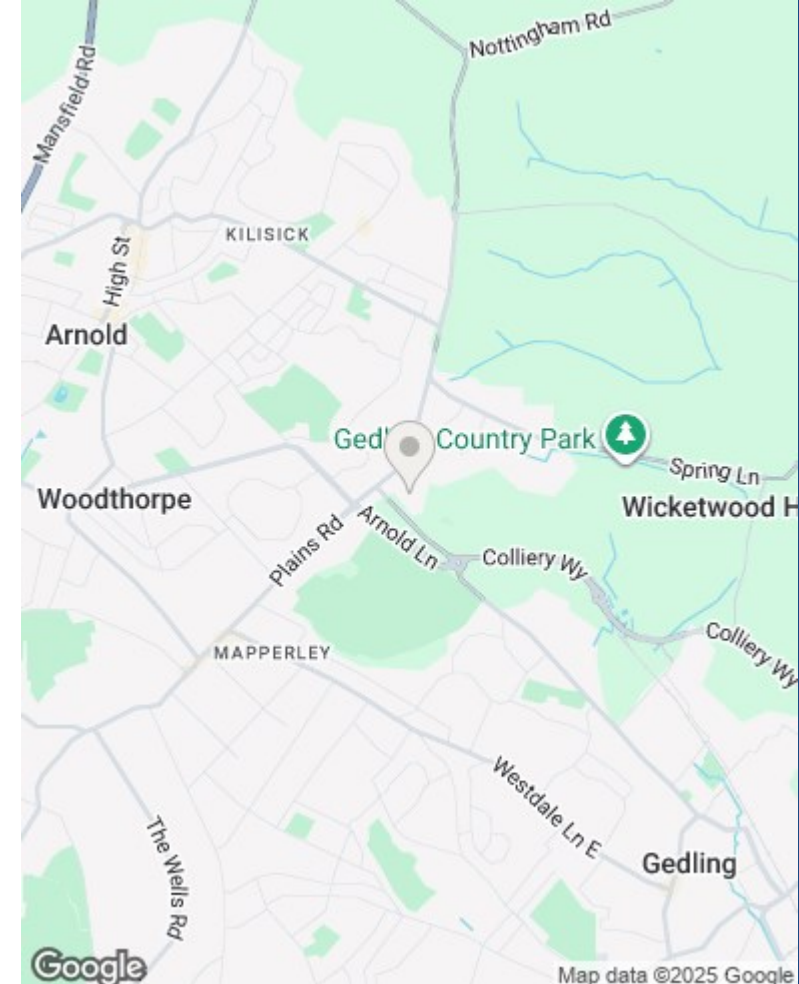
22.5 m²
242 ft²

(1) Excluding balconies and terraces

Reduced headroom:
Below 1.5 m/5 ft

Calculations reference the RICS IPMS 3C standard. Measurements are approximate and not to scale. This floor plan is intended for illustration only.

GIRAFFE360



Map data ©2025 Google

These particulars are produced in good faith, are set out as a general guide only and do not constitute any part of a contract. No person in the employment of David James Estate Agents Ltd has any authority to make any representation whatsoever in relation to the property. All services, together with electrical fittings or fitted appliances have NOT been tested. All the measurements given in the details are approximate. Floor plans are for illustrative purposes only and are not drawn to scale. The position and size of doors, windows, appliances and other features are approximate only. The photographs of this property have been taken with a 10mm wide-angle lens. No responsibility can be accepted for any loss or expense incurred in viewing. If you have a property to sell you may wish to take advantage of our free valuation service. David James Estate Agents have established professional relationships with third-party suppliers for the provision of services to Clients. As remuneration for this professional relationship, the agent receives referral commission from the third-party company. David James Estate Agents receives the following commission from each third party supplier on a per referral basis: W A Barnes Ltd: £60 including VAT. All Moves UK Ltd: 18% including VAT of the invoice total (£107 including VAT average). MoveWithUs Limited: £188 including VAT (average).

Council Tax Band: Exempt

DavidJames
the estate agent

David James Estate Agents
45b Plains Road, Mapperley, Nottingham, NG3 5JU
t: 0115 962 4213 e: lettings@david-james.com

naea | propertymark
PROTECTED

**The Property
Ombudsman**