



2



1



1



D

**DavidJames**  
the estate agent

**Downham Close, Woodthorpe View, Nottingham, NG5 6PR**

**£850 Per Calendar Month**



# About This Property

A well-presented Georgian style town house comprising spacious lounge with bow window, dining kitchen with some integrated appliances, two bedrooms including a bedroom with fitted wardrobes & bathroom with white suite. Outside, the property enjoys an enclosed rear garden & front lawn.

## TENANCY DETAILS

Available From: 28th July 2025

Tenancy Term: Minimum 6 months

Furnishing: Unfurnished

EPC Rating: D

Council Band: B

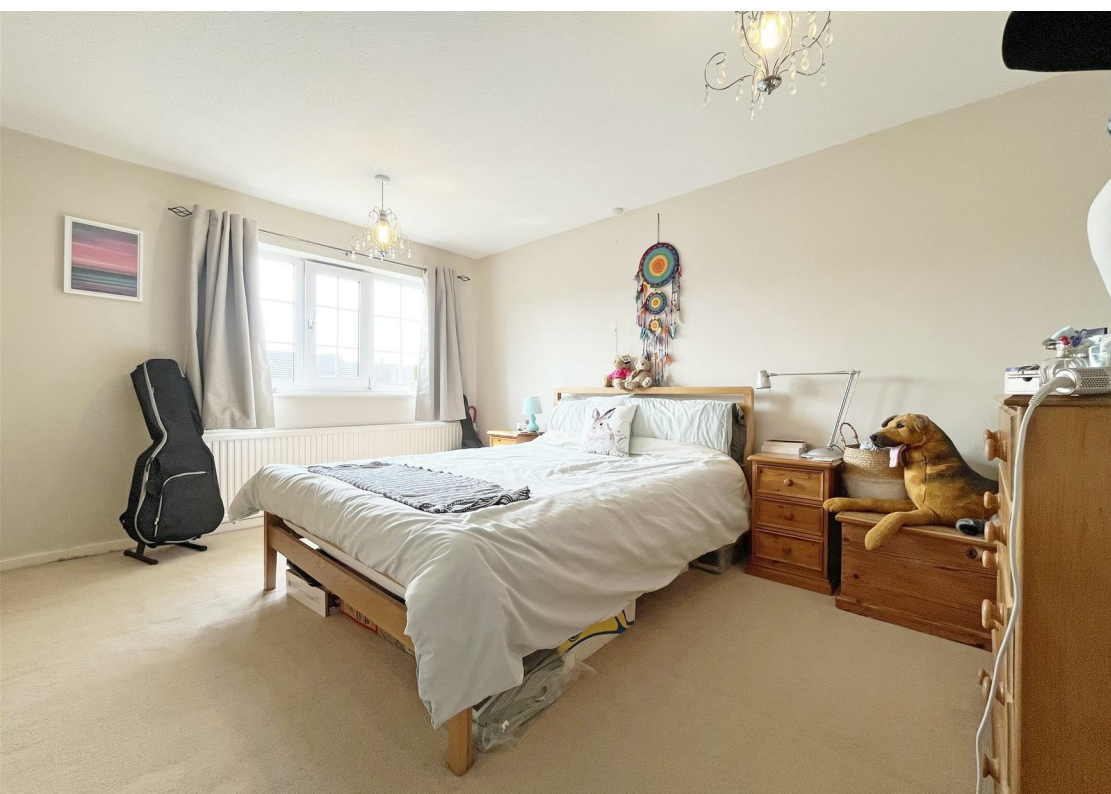
Pets: Not permitted



- Georgian style townhouse
- Two bedrooms
- Lounge with bow window
- Dining kitchen with patio doors
- Integrated oven, hob & extractor
- Bathroom with white suite
- Combination gas central heating
- UPVC double glazing
- Lawned front garden & paved rear garden
- Cul-de-sac location



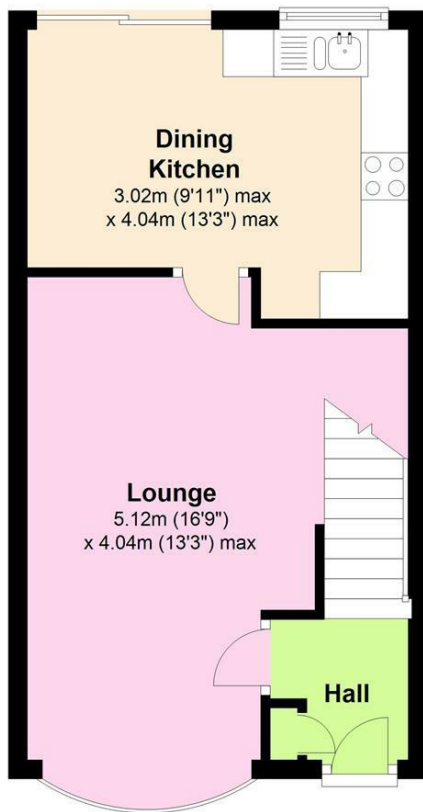






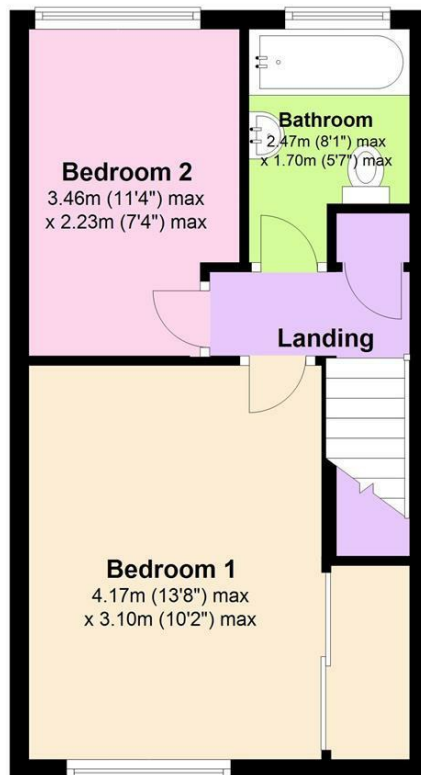
## Ground Floor

Approx. 31.5 sq. metres (338.6 sq. feet)

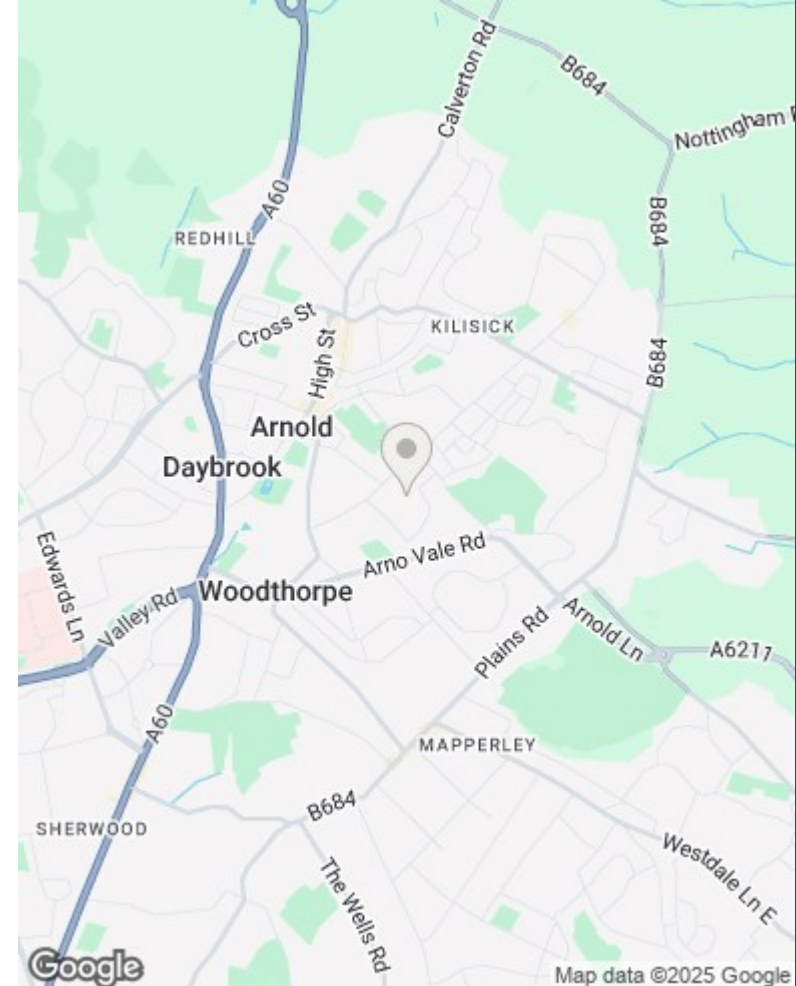


## First Floor

Approx. 31.1 sq. metres (335.0 sq. feet)



Total area: approx. 62.6 sq. metres (673.5 sq. feet)



These particulars are produced in good faith, are set out as a general guide only and do not constitute any part of a contract. No person in the employment of David James Estate Agents Ltd has any authority to make any representation whatsoever in relation to the property. All services, together with electrical fittings or fitted appliances have NOT been tested. All the measurements given in the details are approximate. Floor plans are for illustrative purposes only and are not drawn to scale. The position and size of doors, windows, appliances and other features are approximate only. The photographs of this property have been taken with a 10mm wide-angle lens. No responsibility can be accepted for any loss or expense incurred in viewing. If you have a property to sell you may wish to take advantage of our free valuation service. David James Estate Agents have established professional relationships with third-party suppliers for the provision of services to Clients. As remuneration for this professional relationship, the agent receives referral commission from the third-party company. David James Estate Agents receives the following commission from each third party supplier on a per referral basis: W A Barnes Ltd: £60 including VAT. All Moves UK Ltd: 18% including VAT of the invoice total (£107 including VAT average). MoveWithUs Limited: £188 including VAT (average).

**Council Tax Band: B**  
**Gedling Borough Council**

**DavidJames**  
the estate agent

David James Estate Agents  
45b Plains Road, Mapperley, Nottingham, NG3 5JU  
t: 0115 962 4213 e: lettings@david-james.com

naea | propertymark  
**PROTECTED**

