



1



1



1



E

DavidJames
the estate agent

Hine Hall, Mapperley, Nottingham, NG3 5PL

£750 Per Calendar Month

About This Property

Located in the popular area of Mapperley, this beautifully refurbished first-floor flat offers modern, stylish living in a peaceful setting. The property benefits from a brand-new kitchen complete with integrated oven, hob, and extractor, as well as a freestanding washing machine and fridge for added convenience. The living room is bathed in natural light thanks to dual aspect windows, creating a bright and welcoming space. The generous bedroom also features dual aspect windows, maintaining the light and airy feel throughout. A modern bathroom with an electric shower and a separate WC add practicality and comfort. Additional features include gated resident parking, visitor parking, and access to beautifully maintained communal gardens – ideal for relaxation. Situated close to Mapperley's vibrant shops, cafes, and excellent transport links, this flat combines contemporary finishes with a tranquil lifestyle.

TENANCY DETAILS

Available From: NOW

Tenancy Term: Minimum 6 months

Furnishing: Unfurnished o

EPC Rating: E

Council Band: A

Pets: Not permitted

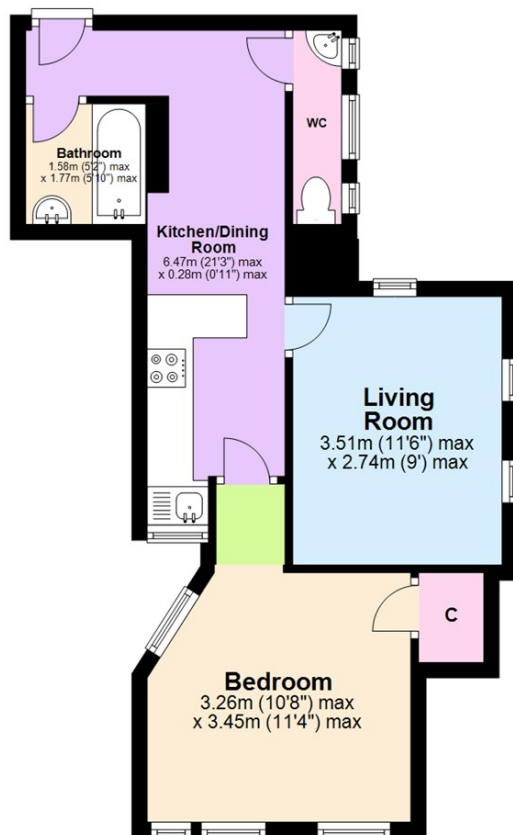
- Refurbished first floor flat
- Bedroom with dual aspect windows
- Brand new kitchen with integrated oven, hob & extractor
- Freestanding washing machine and fridge will be provided
- Living room with dual aspect windows
- Modern bathroom with electric shower
- Separate WC
- Electric heating
- Gated parking and visitors parking area
- Beautiful communal gardens



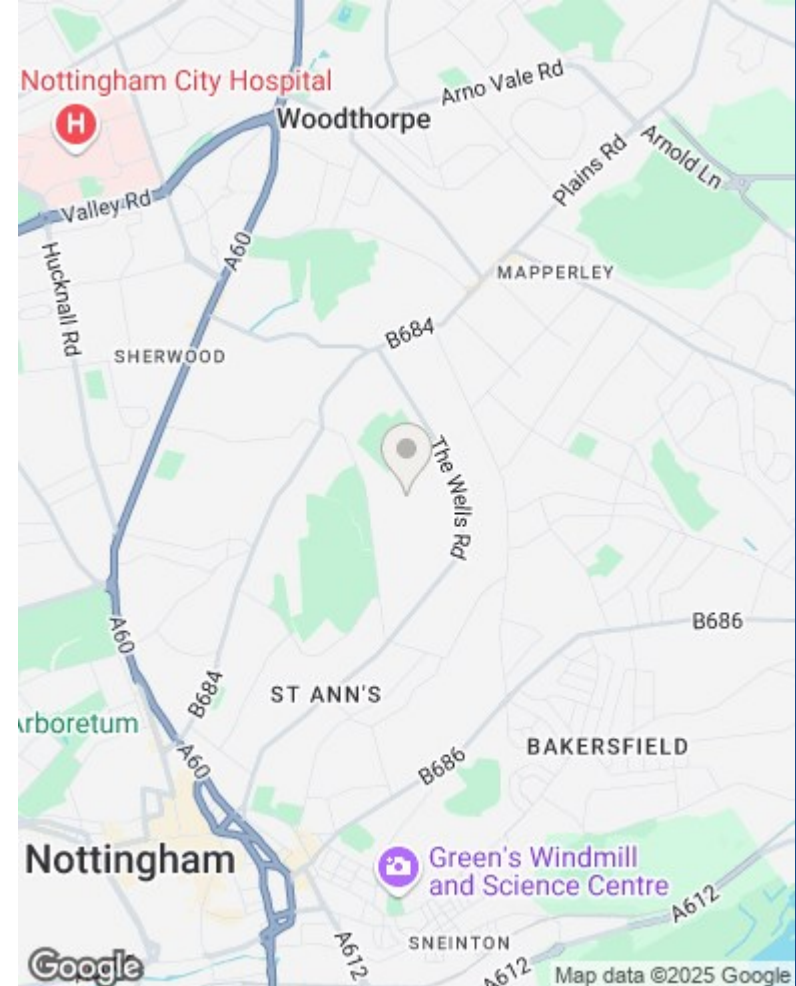


First Floor

Approx. 29.8 sq. metres (320.9 sq. feet)



Total area: approx. 29.8 sq. metres (320.9 sq. feet)



These particulars are produced in good faith, are set out as a general guide only and do not constitute any part of a contract. No person in the employment of David James Estate Agents Ltd has any authority to make any representation whatsoever in relation to the property. All services, together with electrical fittings or fitted appliances have NOT been tested. All the measurements given in the details are approximate. Floor plans are for illustrative purposes only and are not drawn to scale. The position and size of doors, windows, appliances and other features are approximate only. The photographs of this property have been taken with a 10mm wide-angle lens. No responsibility can be accepted for any loss or expense incurred in viewing. If you have a property to sell you may wish to take advantage of our free valuation service. David James Estate Agents have established professional relationships with third-party suppliers for the provision of services to Clients. As remuneration for this professional relationship, the agent receives referral commission from the third-party company. David James Estate Agents receives the following commission from each third party supplier on a per referral basis: W A Barnes Ltd: £60 including VAT. All Moves UK Ltd: 18% including VAT of the invoice total (£107 including VAT average). MoveWithUs Limited: £188 including VAT (average).

Council Tax Band: A
Nottingham City Council

DavidJames
the estate agent

David James Estate Agents
45b Plains Road, Mapperley, Nottingham, NG3 5JU
t: 0115 962 4213 e: lettings@david-james.com

naea | propertymark
PROTECTED

**The Property
Ombudsman**