



DavidJames
the estate agent

Winsford Close, Nottingham, NG8 5JR

£1,100 Per Calendar Month

About This Property

Situated on a generous corner plot, this well-presented end terrace home offers spacious and comfortable living. The property has recently undergone a scheme of improvements and boasts a bright and inviting living room complete with a stylish feature electric fireplace, and a kitchen offers ample storage with a range of appliances. Upstairs, you'll find three well-proportioned bedrooms and a modern bathroom/WC fitted with a contemporary white suite and an electric shower. Externally, the property is surrounded by a large, enclosed garden and a gated driveway provides convenient off-street parking for multiple vehicles. Ideally located within easy reach of Nottingham City Hospital, the Queen's Medical Centre, and with excellent transport links and local amenities nearby, this home offers a superb blend of space, comfort, and accessibility.

Available From: 22nd May 2025

Tenancy Term: Minimum 12 months

Furnishing: Unfurnished

EPC Rating: C

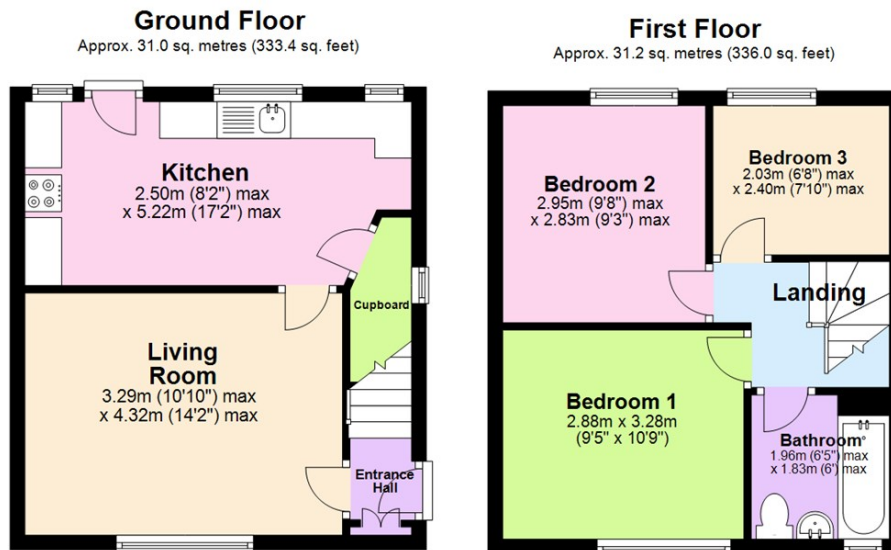
Council Band: A

Pets: Considered with £25pcm rent increase

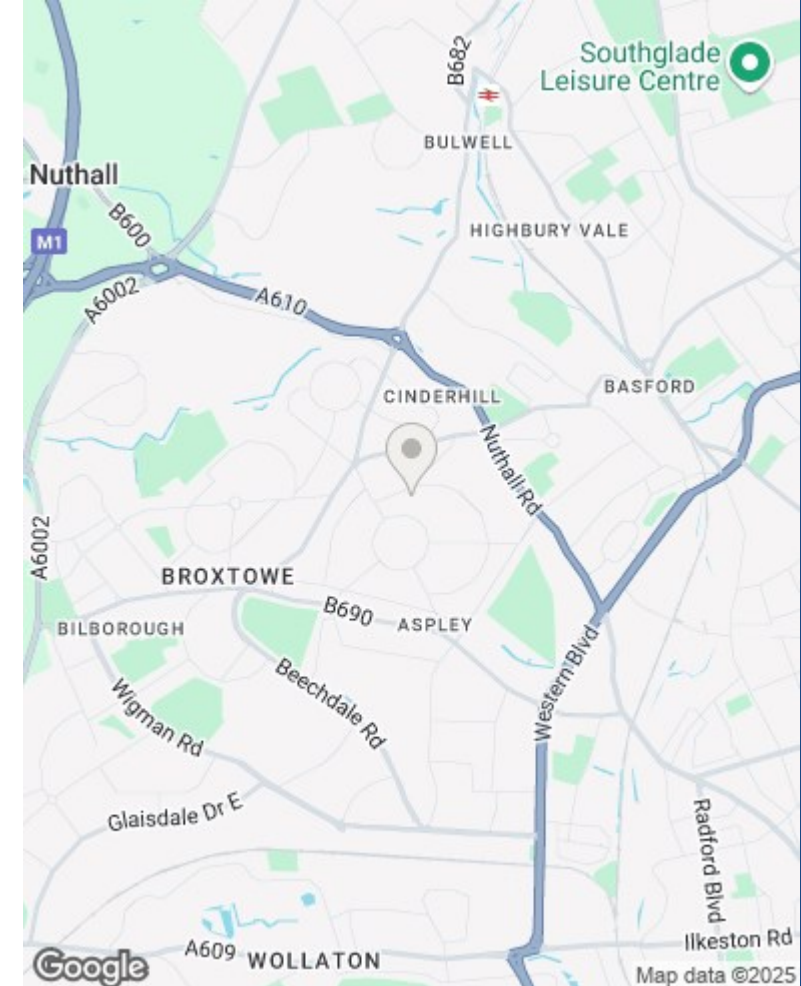
- Corner plot end terrace house
- Three bedrooms
- Living room with feature electric fireplace
- Kitchen with ample storage & appliances
- Modern bathroom/Wc with white suite & electric shower
- UPVC double glazing
- Combi gas central heating
- Large garden surrounds the property
- Gated driveway provides off street parking for multiple vehicles
- Well-positioned for commuting to the City Hospital and the QMC







Total area: approx. 62.2 sq. metres (669.5 sq. feet)



Council Tax Band: A
Nottingham City Council

These particulars are produced in good faith, are set out as a general guide only and do not constitute any part of a contract. No person in the employment of David James Estate Agents Ltd has any authority to make any representation whatsoever in relation to the property. All services, together with electrical fittings or fitted appliances have NOT been tested. All the measurements given in the details are approximate. Floor plans are for illustrative purposes only and are not drawn to scale. The position and size of doors, windows, appliances and other features are approximate only. The photographs of this property have been taken with a 10mm wide-angle lens. No responsibility can be accepted for any loss or expense incurred in viewing. If you have a property to sell you may wish to take advantage of our free valuation service. David James Estate Agents have established professional relationships with third-party suppliers for the provision of services to Clients. As remuneration for this professional relationship, the agent receives referral commission from the third-party company. David James Estate Agents receives the following commission from each third party supplier on a per referral basis: W A Barnes Ltd: £60 including VAT. All Moves UK Ltd: 18% including VAT of the invoice total (£107 including VAT average). MoveWithUs Limited: £188 including VAT (average).

DavidJames
the estate agent

David James Estate Agents
45b Plains Road, Mapperley, Nottingham, NG3 5JU
t: 0115 962 4213 e: lettings@david-james.com

naea | propertymark
PROTECTED

**The Property
Ombudsman**