



1



1



1



c

DavidJames
the estate agent

Colbrook Place, Midland Road, Carlton, NG4 2GH

£700 Per Calendar Month

About This Property

A well-presented first-floor flat boasting a bright and airy open-plan living area featuring a Juliet balcony, and a well-equipped breakfast kitchen, complete with appliances. The double bedroom benefits from a built-in mirrored wardrobe, while the contemporary bathroom features a white suite and a mains-powered shower. The property also has UPVC double glazing, electric heating, and a secure intercom entry system for added peace of mind. Externally, there is allocated off-street parking, and residents can enjoy the convenience of a wide range of nearby shops, amenities, and eateries. With frequent bus links and Carlton Train Station just a stone's throw away, this is a fantastic opportunity to enjoy comfort, convenience, and connectivity in equal measure.

TENANCY DETAILS

Available From: NOW

Tenancy Term: Minimum 12 months

Furnishing: Unfurnished

EPC Rating: C

Council Band: A

Pets: Not permitted

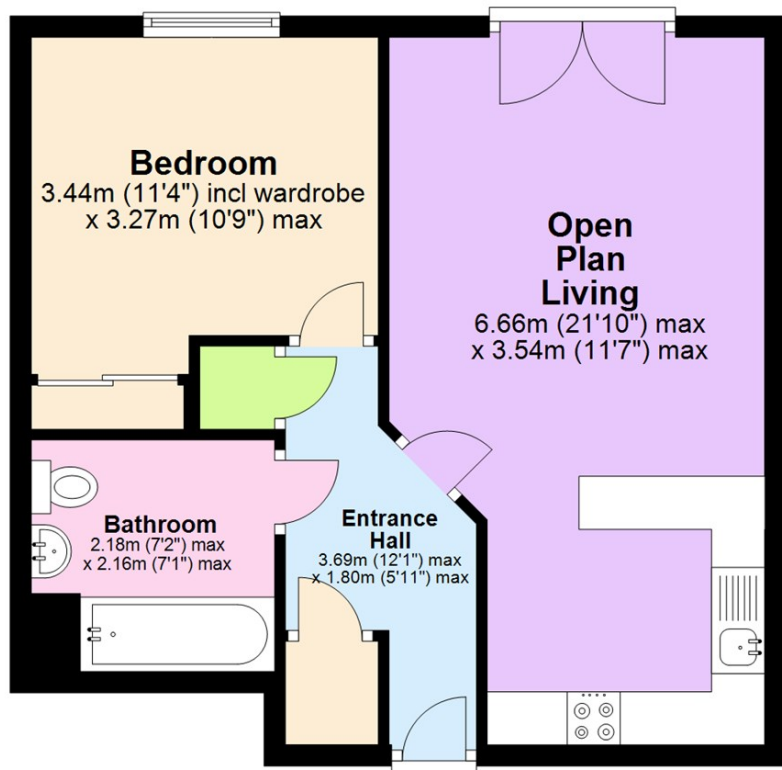
- Well-presented 1st floor flat
- One bedroom with built-in mirrored wardrobe
- Open plan living with Juliet balcony
- Well-equipped breakfast kitchen with appliances
- Modern bathroom/Wc with white suite & mains shower
- UPVC double glazing, electric heating
- Intercom entry system
- Allocated off-street parking
- Ample amenities close by
- Frequent transport links, including Carlton Train Station a stone's throw away



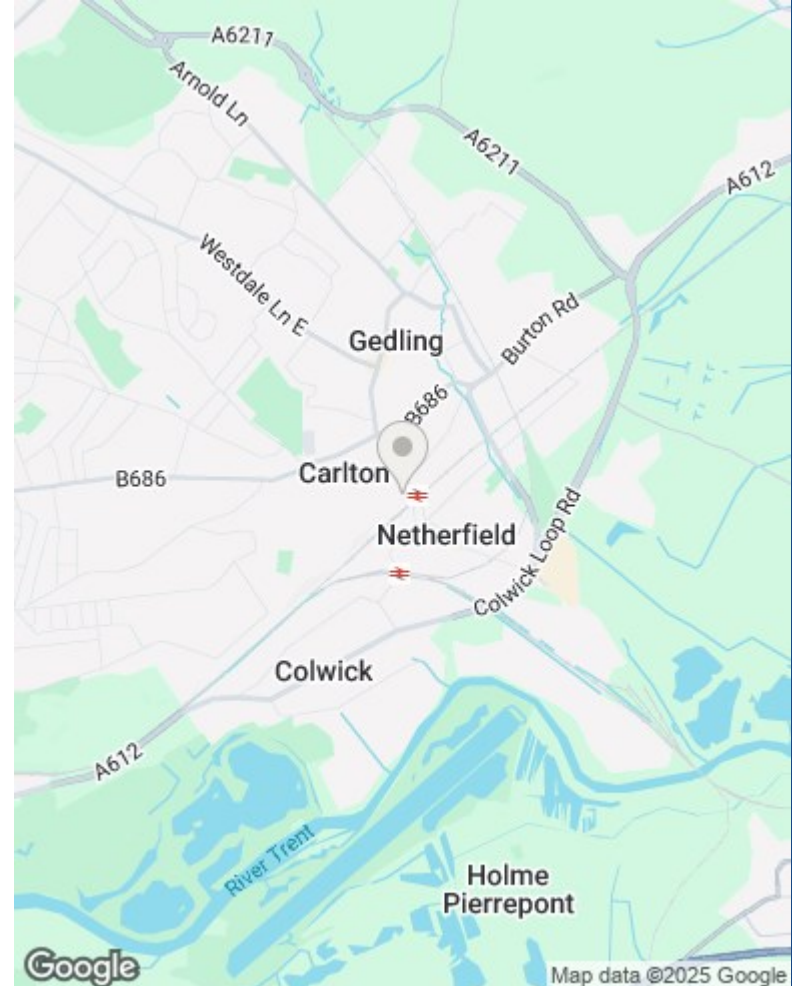


First Floor

Approx. 43.8 sq. metres (472.0 sq. feet)



Total area: approx. 43.8 sq. metres (472.0 sq. feet)



These particulars are produced in good faith, are set out as a general guide only and do not constitute any part of a contract. No person in the employment of David James Estate Agents Ltd has any authority to make any representation whatsoever in relation to the property. All services, together with electrical fittings or fitted appliances have NOT been tested. All the measurements given in the details are approximate. Floor plans are for illustrative purposes only and are not drawn to scale. The position and size of doors, windows, appliances and other features are approximate only. The photographs of this property have been taken with a 10mm wide-angle lens. No responsibility can be accepted for any loss or expense incurred in viewing. If you have a property to sell you may wish to take advantage of our free valuation service. David James Estate Agents have established professional relationships with third-party suppliers for the provision of services to Clients. As remuneration for this professional relationship, the agent receives referral commission from the third-party company. David James Estate Agents receives the following commission from each third party supplier on a per referral basis: W A Barnes Ltd: £60 including VAT. All Moves UK Ltd: 18% including VAT of the invoice total (£107 including VAT average). MoveWithUs Limited: £188 including VAT (average).

Council Tax Band: A
Gedling Borough Council

DavidJames
the estate agent

David James Estate Agents
45b Plains Road, Mapperley, Nottingham, NG3 5JU
t: 0115 962 4213 e: lettings@david-james.com

naea | propertymark
PROTECTED

**The Property
Ombudsman**