



DavidJames
the estate agent

Kenrick Road, Mapperley, Nottingham, NG3 6HN

£1,300 Per Calendar Month

About This Property

Situated in the sought-after area of Mapperley, is this newly renovated four-bedroom semi-detached house. Step inside to discover a spacious and bright layout, with two reception rooms, an open-plan kitchen and dining area, complete with sleek modern fittings, ample workspace, and double patio doors that flood the space with natural light while providing access to the rear garden. On the first floor, you'll find four generously sized double bedrooms, three of which include built-in storage for convenience. The main bedroom boasts an ensuite with a freestanding shower, while a stylish bathroom serves the other bedrooms, featuring a shower over the bath. Externally, the property boasts a low maintenance rear garden and a garage, This property is enhanced by its desirable Mapperley location offering easy access to local amenities, schools, and transport links. VIDEO TOUR AVAILABLE!

TENANCY DETAILS

Available From: Now

Tenancy Term: Minimum 12 Months

Furnishing: Unfurnished

EPC Rating: D

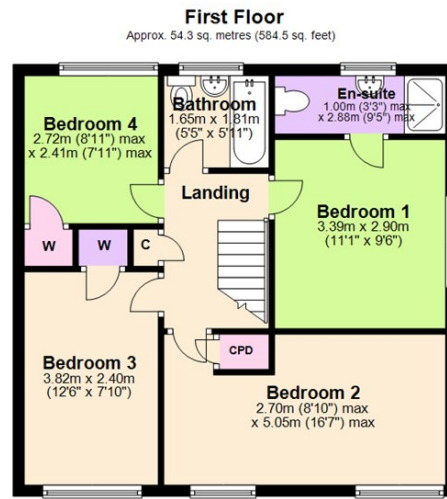
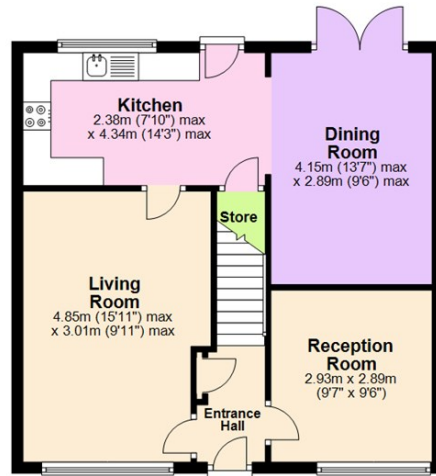
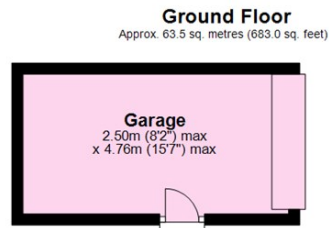
Council Band: B

Pets: Not permitted

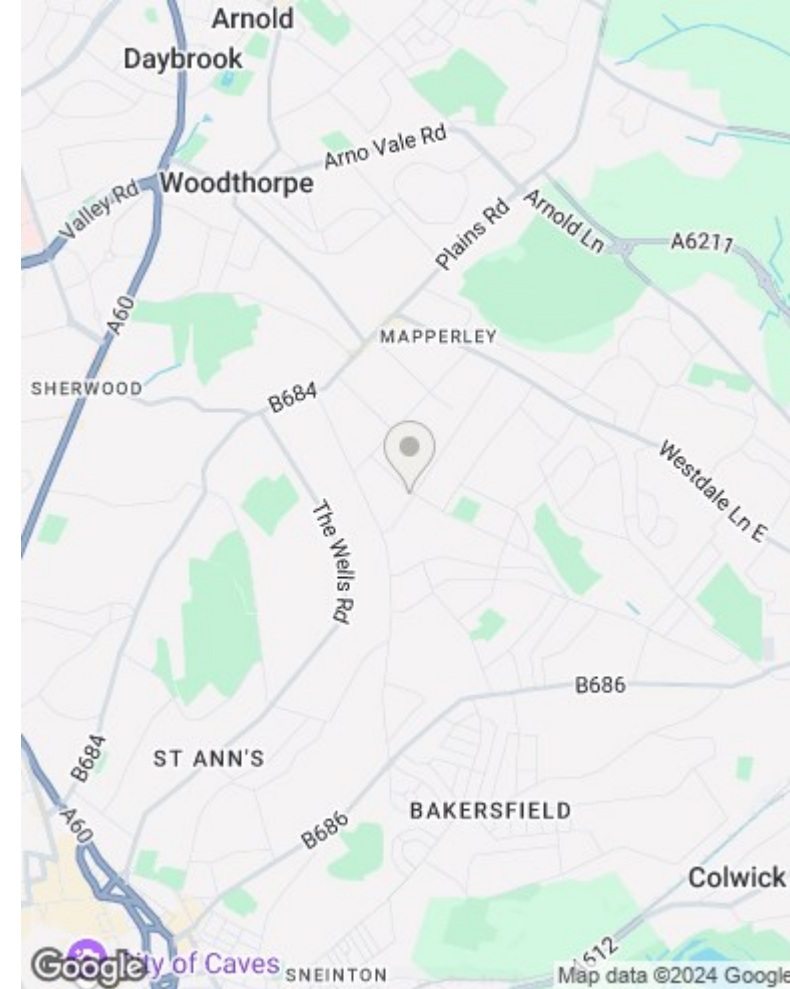
- Newly renovated semi-detached house
- Four generously sized double bedrooms
- Two spacious reception rooms
- Large open-plan kitchen and dining area
- Double patio doors leading to a private rear garden
- Main bedroom with modern ensuite and freestanding shower
- Bathroom with shower over the bath
- Full double glazing and Gas Central Heating
- Low maintenance rear garden
- Detached garage providing additional storage or parking space







Total area: approx. 117.8 sq. metres (1267.5 sq. feet)



These particulars are produced in good faith, are set out as a general guide only and do not constitute any part of a contract. No person in the employment of David James Estate Agents Ltd has any authority to make any representation whatsoever in relation to the property. All services, together with electrical fittings or fitted appliances have NOT been tested. All the measurements given in the details are approximate. Floor plans are for illustrative purposes only and are not drawn to scale. The position and size of doors, windows, appliances and other features are approximate only. The photographs of this property have been taken with a 10mm wide-angle lens. No responsibility can be accepted for any loss or expense incurred in viewing. If you have a property to sell you may wish to take advantage of our free valuation service. David James Estate Agents have established professional relationships with third-party suppliers for the provision of services to Clients. As remuneration for this professional relationship, the agent receives referral commission from the third-party company. David James Estate Agents receives the following commission from each third party supplier on a per referral basis: W A Barnes Ltd: £60 including VAT. All Moves UK Ltd: 18% including VAT of the invoice total (£107 including VAT average). MoveWithUs Limited: £188 including VAT (average).

Council Tax Band: B
Gedling Borough Council

DavidJames
the estate agent

David James Estate Agents
45b Plains Road, Mapperley, Nottingham, NG3 5JU
t: 0115 962 4213 e: lettings@david-james.com

