



2



2



1



D

Lichfield Road, Sneinton, Nottingham, NG2 4GF

DavidJames
the estate agent

£895

About This Property

Situated in Sneinton, this charming 2-bedroom terraced house has been freshly painted throughout and offers a warm and welcoming living space. Upon entering, you are greeted by a spacious lounge complete with a feature fireplace, the lounge leads seamlessly into a generously sized dining room. The modern kitchen is well-equipped, providing ample storage and workspace. Upstairs, you'll find two well-proportioned bedrooms, each showcasing beautiful original fireplaces, and a contemporary bathroom. Outside, the property boasts a low-maintenance rear garden with a patio area. This delightful home is ideally located within walking distance of local amenities, schools, and transport links.
VIDEO TOUR AVAILABLE!

TENANCY DETAILS

Available From: Now

Tenancy Term: Minimum 6 months

Furnishing: Unfurnished

EPC Rating: D

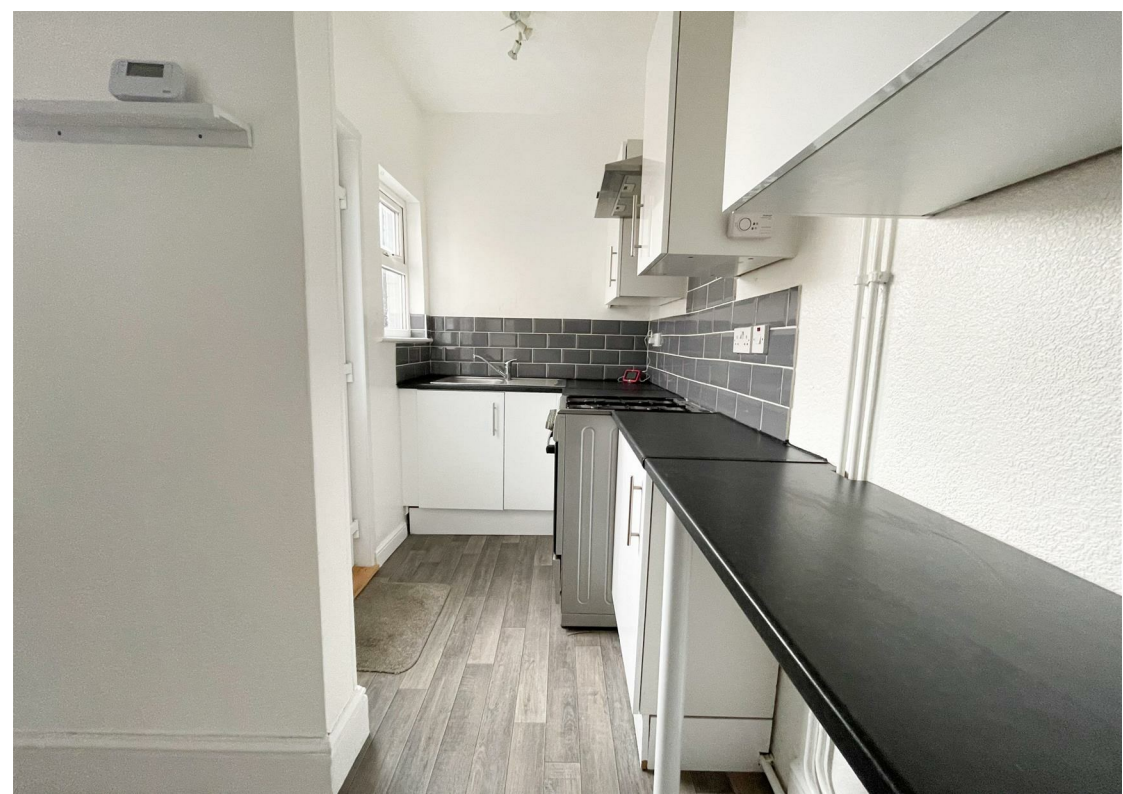
Council Band: A

Pets: Not permitted

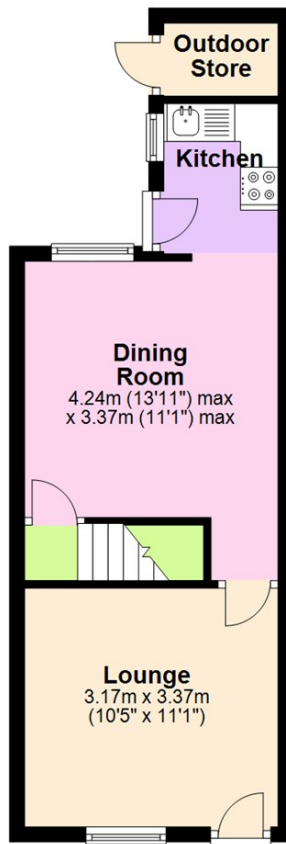


- Two bedroom terrace house
- Spacious lounge with feature fireplace
- Large dining room
- Modern kitchen
- Two well-proportioned bedrooms
- Contemporary bathroom
- Low-maintenance rear garden
- Fully double glazed windows and Gas Central heating
- Convenient location
- Close to local amenities, schools, and transport links

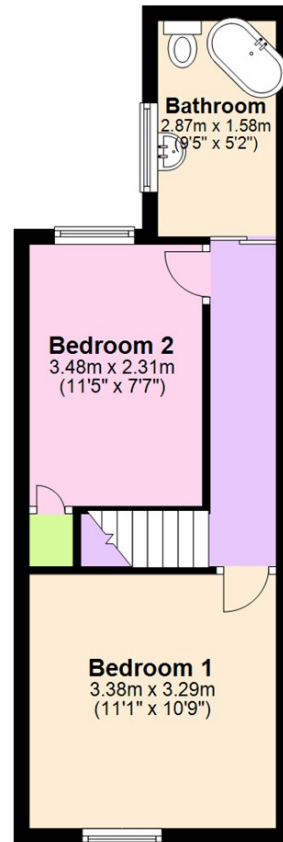




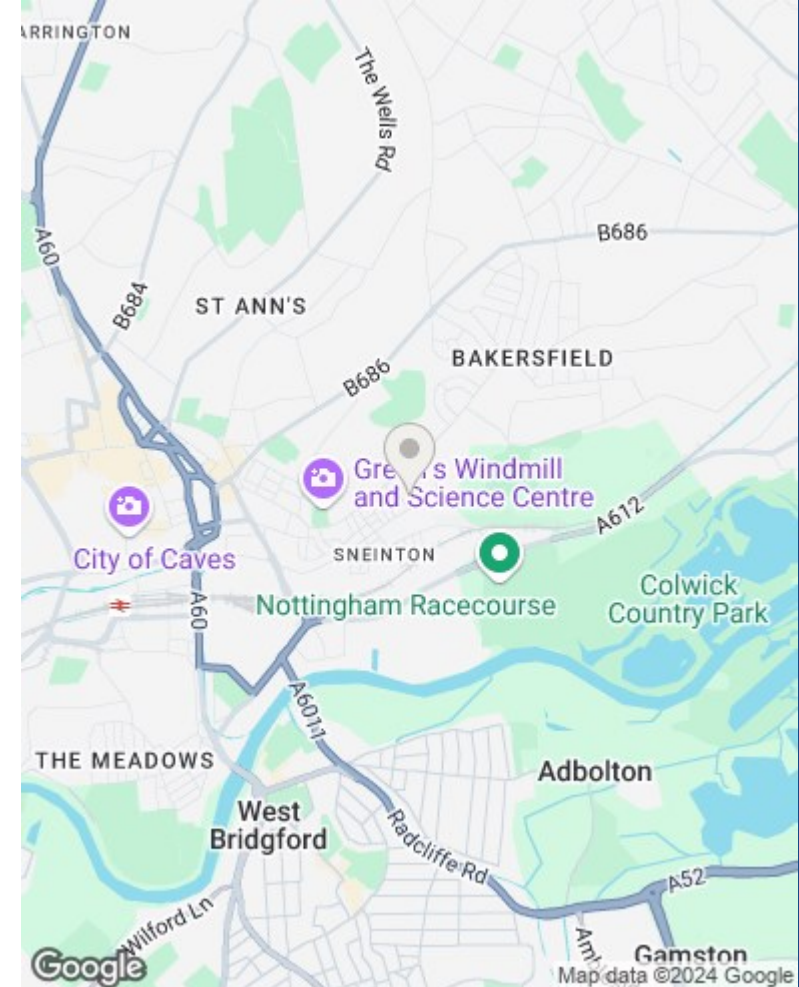
Ground Floor
Approx. 30.2 sq. metres (324.6 sq. feet)



First Floor
Approx. 30.2 sq. metres (325.3 sq. feet)



Total area: approx. 60.4 sq. metres (649.8 sq. feet)



These particulars are produced in good faith, are set out as a general guide only and do not constitute any part of a contract. No person in the employment of David James Estate Agents Ltd has any authority to make any representation whatsoever in relation to the property. All services, together with electrical fittings or fitted appliances have NOT been tested. All the measurements given in the details are approximate. Floor plans are for illustrative purposes only and are not drawn to scale. The position and size of doors, windows, appliances and other features are approximate only. The photographs of this property have been taken with a 10mm wide-angle lens. No responsibility can be accepted for any loss or expense incurred in viewing. If you have a property to sell you may wish to take advantage of our free valuation service. David James Estate Agents have established professional relationships with third-party suppliers for the provision of services to Clients. As remuneration for this professional relationship, the agent receives referral commission from the third-party company. David James Estate Agents receives the following commission from each third party supplier on a per referral basis: W A Barnes Ltd: £60 including VAT. All Moves UK Ltd: 18% including VAT of the invoice total (£107 including VAT average). MoveWithUs Limited: £188 including VAT (average).

Council Tax Band: A
Nottingham City Council

DavidJames
the estate agent

David James Estate Agents
45b Plains Road, Mapperley, Nottingham, NG3 5JU
t: 0115 962 4213 e: lettings@david-james.com

naea | propertymark
PROTECTED

The Property Ombudsman