



 4

 1

 1

 D

DavidJames
the estate agent

Gardendale Avenue, Clifton, Nottingham, NG11 9HX

£1,150 Per Calendar Month

About This Property

A well-presented three-story, four-bedroom semi-detached home in Clifton offers an ideal blend of contemporary style and spacious living. The ground floor welcomes you with a living room, alongside a modern kitchen and dining area that boasts ample storage. The dining room features patio doors leading to a low-maintenance rear garden. A convenient ground floor WC adds to the practicality of this home. On the first floor, you will find three generously sized bedrooms and a bathroom with contemporary fixtures and fittings. The entire second floor is dedicated to the fourth bedroom, providing a private retreat that could also serve as a home office or guest room. The property is complemented by a well-maintained front garden, creating an inviting entrance. This home is perfect for families or professionals looking for a modern living space in a highly sought-after location.

TENANCY DETAILS

Available From: NOW

Tenancy Term: Minimum 6 months

Furnishing: Flexible

EPC Rating: D

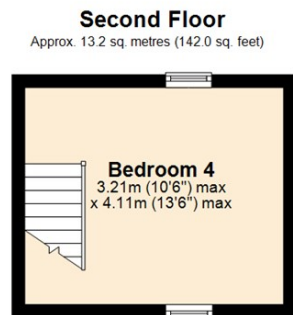
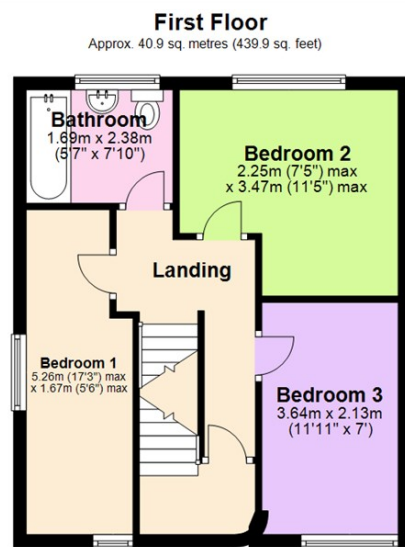
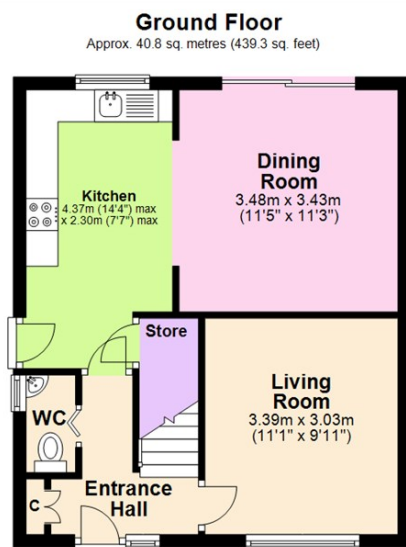
Council Band: A

Pets: Not permitted

- Three-story, four-bedroom semi-detached house
- Spacious modern kitchen
- Dining room with patio doors leading to the rear garden
- Bright and airy living room on the ground floor
- Convenient ground floor WC
- Three well-sized bedrooms on the first floor
- Contemporary family bathroom
- Fourth bedroom on the second floor
- Low-maintenance rear garden, perfect for outdoor entertaining
- Fully double glazed windows & Gas central heating







Total area: approx. 94.9 sq. metres (1021.3 sq. feet)



These particulars are produced in good faith, are set out as a general guide only and do not constitute any part of a contract. No person in the employment of David James Estate Agents Ltd has any authority to make any representation whatsoever in relation to the property. All services, together with electrical fittings or fitted appliances have NOT been tested. All the measurements given in the details are approximate. Floor plans are for illustrative purposes only and are not drawn to scale. The position and size of doors, windows, appliances and other features are approximate only. The photographs of this property have been taken with a 10mm wide-angle lens. No responsibility can be accepted for any loss or expense incurred in viewing. If you have a property to sell you may wish to take advantage of our free valuation service. David James Estate Agents have established professional relationships with third-party suppliers for the provision of services to Clients. As remuneration for this professional relationship, the agent receives referral commission from the third-party company. David James Estate Agents receives the following commission from each third party supplier on a per referral basis: W A Barnes Ltd: £60 including VAT. All Moves UK Ltd: 18% including VAT of the invoice total (£107 including VAT average). MoveWithUs Limited: £188 including VAT (average).

Council Tax Band: A
Nottingham City Council

DavidJames
the estate agent

David James Estate Agents
45b Plains Road, Mapperley, Nottingham, NG3 5JU
t: 0115 962 4213 e: lettings@david-james.com

