



**DavidJames**  
the estate agent

**Dunsford Drive, Mapperley Plains, Nottingham, NG3 5SB**

**£895 Per Calendar Month**



# About This Property

Nestled in a quiet cul-de-sac in Mapperley Plains, this mid-townhouse offers a blend of comfort and convenience. Perfect for couples or professionals, the ground floor features a living room with laminate flooring and a feature fireplace and a kitchen with an integrated oven and hob. Upstairs, there are two bedrooms and a bathroom fitted with a white suite and an electric shower, ensuring a refreshing start to the day. Outside, the low-maintenance front and rear gardens provide the perfect space for relaxation and outdoor enjoyment. Located in a sought-after area, this home benefits from fantastic local amenities, including shops, schools, and parks, all within easy reach. This property offers a wonderful opportunity to enjoy a peaceful lifestyle without sacrificing convenience.

## TENANCY DETAILS

Available From: NOW

Tenancy Term: Minimum 6 months

Furnishing: Unfurnished

EPC Rating: TBC

Council Band: B

Pets: Not permitted

- Mid-townhouse situated in a quiet cul-de-sac
- Two bedrooms
- Living room with laminate flooring and feature fireplace
- Kitchen with integrated oven & hob
- Bathroom/Wc with white suite & electric shower
- Gas central heating
- UPVC double glazing throughout
- Low maintenance front & rear gardens
- Sought-after location
- Fantastic amenities nearby



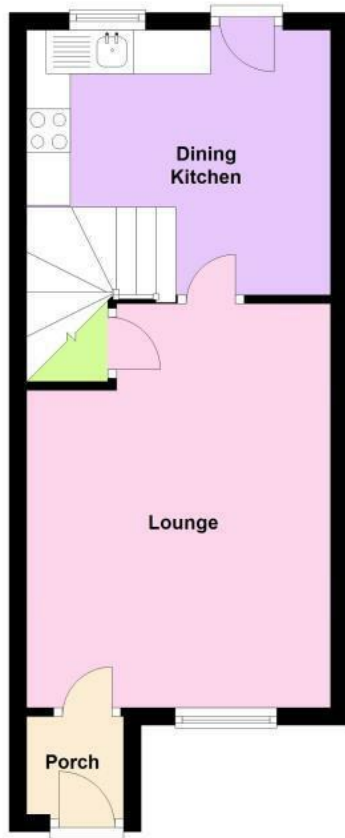






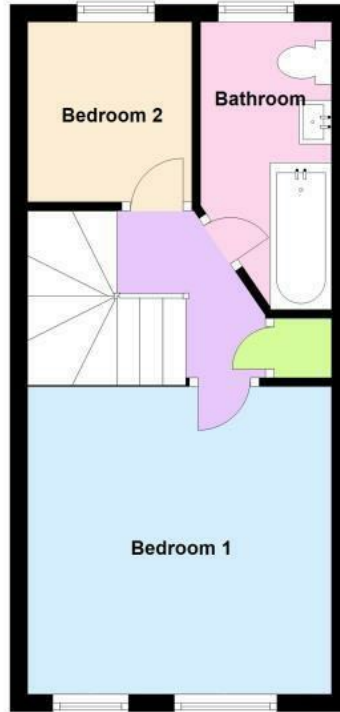
### Ground Floor

Approx. 27.3 sq. metres (293.6 sq. feet)

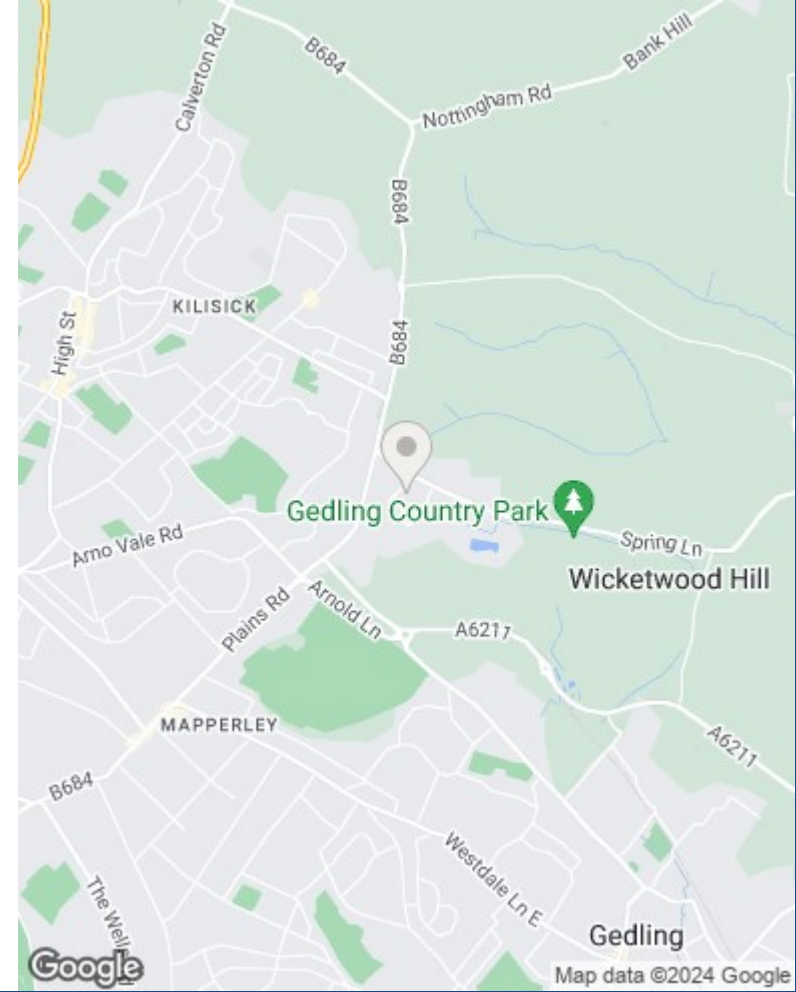


### First Floor

Approx. 26.9 sq. metres (289.3 sq. feet)



Total area: approx. 54.1 sq. metres (582.8 sq. feet)



These particulars are produced in good faith, are set out as a general guide only and do not constitute any part of a contract. No person in the employment of David James Estate Agents Ltd has any authority to make any representation whatsoever in relation to the property. All services, together with electrical fittings or fitted appliances have NOT been tested. All the measurements given in the details are approximate. Floor plans are for illustrative purposes only and are not drawn to scale. The position and size of doors, windows, appliances and other features are approximate only. The photographs of this property have been taken with a 10mm wide-angle lens. No responsibility can be accepted for any loss or expense incurred in viewing. If you have a property to sell you may wish to take advantage of our free valuation service. David James Estate Agents have established professional relationships with third-party suppliers for the provision of services to Clients. As remuneration for this professional relationship, the agent receives referral commission from the third-party company. David James Estate Agents receives the following commission from each third party supplier on a per referral basis: W A Barnes Ltd: £60 including VAT. All Moves UK Ltd: 18% including VAT of the invoice total (£107 including VAT average). MoveWithUs Limited: £188 including VAT (average).

**Council Tax Band: B**  
**Gedling Borough Council**

**DavidJames**  
*the estate agent*

David James Estate Agents  
 45b Plains Road, Mapperley, Nottingham, NG3 5JU  
 t: 0115 962 4213 e: lettings@david-james.com

