



 4

 2

 1

 D

DavidJames
the estate agent

Ashwell Street, Netherfield, Nottingham, NG4 2FQ

£1,250 Per Calendar Month

About This Property

A charming three-storey mid-terrace house in Netherfield, close to local amenities and excellent transport links. The ground floor features an entrance hall with traditional style flooring, a welcoming lounge complete with a feature fireplace and a bay window. Adjacent to this is a generously sized dining room, following on to a spacious kitchen equipped with ample storage. Through the patio doors you will find a low-maintenance rear garden, with a decking area and a small, manageable lawn. The first floor accommodates two spacious double bedrooms and a versatile smaller room that can serve as a dressing room or office, and a family bathroom/WC fitted with a white suite and mains shower. On the second floor you will find the master bedroom, with useful under eaves storage. VIDEO TOUR AVAILABLE!

TENANCY DETAILS

Available From: 1st September 2024

Tenancy Term: Minimum 6 months

Furnishing: Unfurnished

EPC Rating: D

Council Band: A

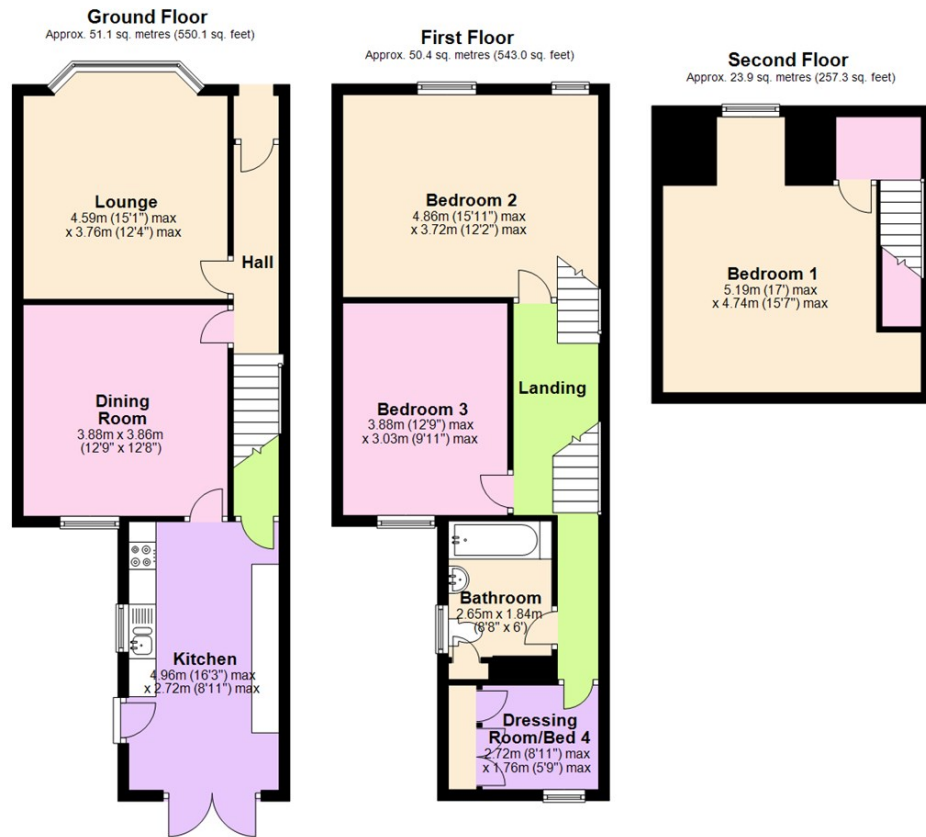
Pets: Considered



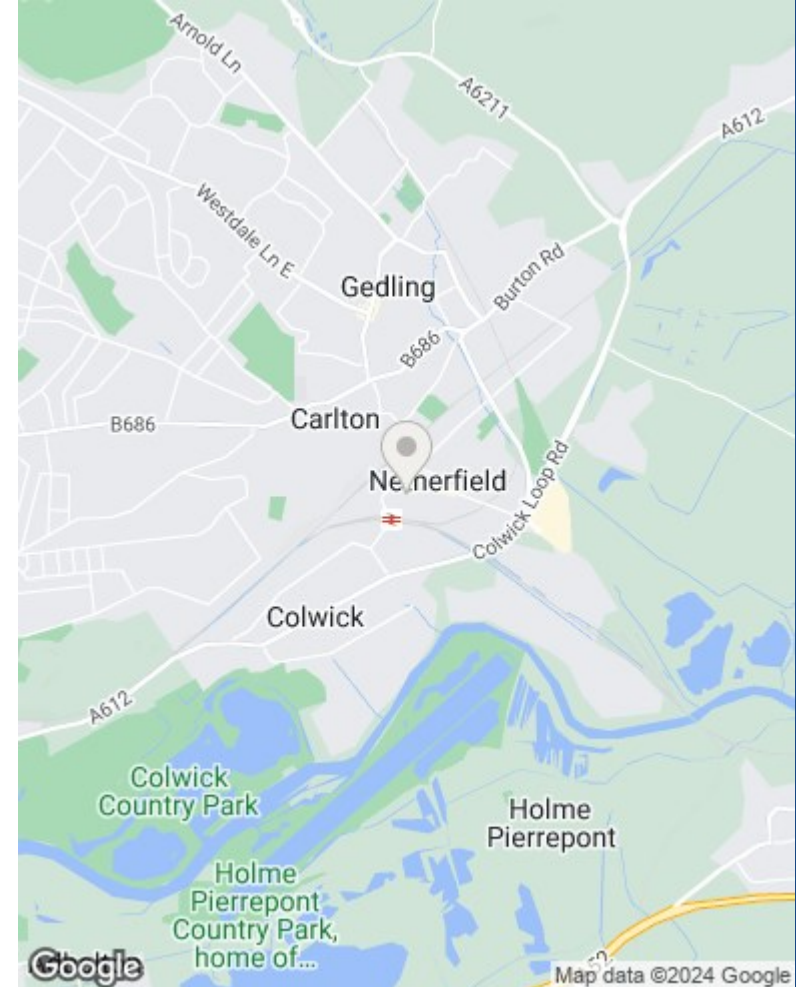
- Charming three-storey mid-terrace house
- Four bedrooms (three double bedrooms and smaller room currently used as a dressing room)
- Entrance hall with traditional style flooring
- Two characterful reception rooms
- Modern kitchen with ample storage
- Bathroom/Wc with white suite and mains shower
- Double glazing
- Gas central heating
- Low maintenance rear garden with decking area
- Excellent amenities and transport links close by







Total area: approx. 125.5 sq. metres (1350.4 sq. feet)



**Council Tax Band: A
Gedling Borough Council**

These particulars are produced in good faith, are set out as a general guide only and do not constitute any part of a contract. No person in the employment of David James Estate Agents Ltd has any authority to make any representation whatsoever in relation to the property. All services, together with electrical fittings or fitted appliances have NOT been tested. All the measurements given in the details are approximate. Floor plans are for illustrative purposes only and are not drawn to scale. The position and size of doors, windows, appliances and other features are approximate only. The photographs of this property have been taken with a 10mm wide-angle lens. No responsibility can be accepted for any loss or expense incurred in viewing. If you have a property to sell you may wish to take advantage of our free valuation service. David James Estate Agents have established professional relationships with third-party suppliers for the provision of services to Clients. As remuneration for this professional relationship, the agent receives referral commission from the third-party company. David James Estate Agents receives the following commission from each third party supplier on a per referral basis: W A Barnes Ltd: £60 including VAT. All Moves UK Ltd: 18% including VAT of the invoice total (£107 including VAT average). MoveWithUs Limited: £188 including VAT (average).

DavidJames
the estate agent

David James Estate Agents
45b Plains Road, Mapperley, Nottingham, NG3 5JU
t: 0115 962 4213 e: lettings@david-james.com

naea | propertymark
PROTECTED

**The Property
Ombudsman**