



DavidJames
the estate agent

Shrewsbury Road, Nottingham, NG2 4HN

£850 Per Calendar Month

About This Property

This beautifully presented mid-terrace house is a perfect blend of style and convenience. Step into a bright living room with elegant wooden finish flooring, leading to a modern kitchen boasting sleek white gloss units and appliances, and a stylish bathroom/WC featuring fully tiled walls, a white suite, and a mains shower. Upstairs, there are two spacious double bedrooms and further benefits include a handy cellar, UPVC double glazing and a combi gas central heating system whilst outside, the low maintenance rear garden with artificial lawn offers a perfect spot for outdoor enjoyment. Located within walking distance to Nottingham City Centre, this home benefits from a wealth of nearby amenities and frequent bus links, making it an ideal choice for those seeking convenience and modern living. VIDEO TOUR AVAILABLE!

TENANCY DETAILS

Available From: NOW

Tenancy Term: Minimum 6 months

Furnishing: Unfurnished

EPC Rating: D

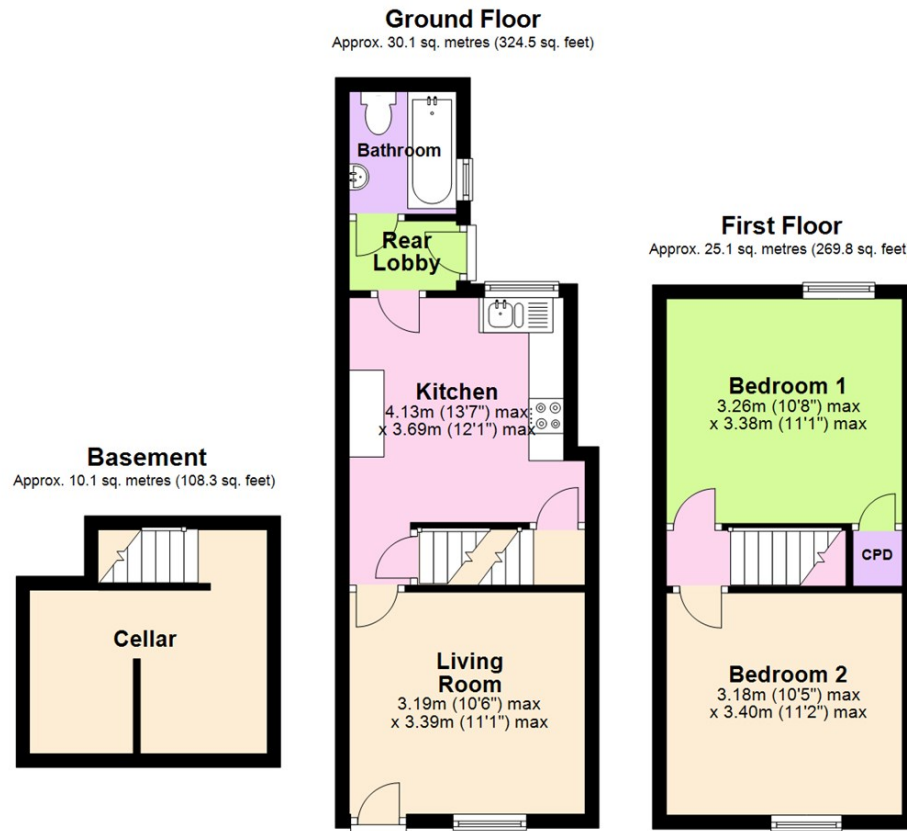
Council Band: A

Pets: Not permitted

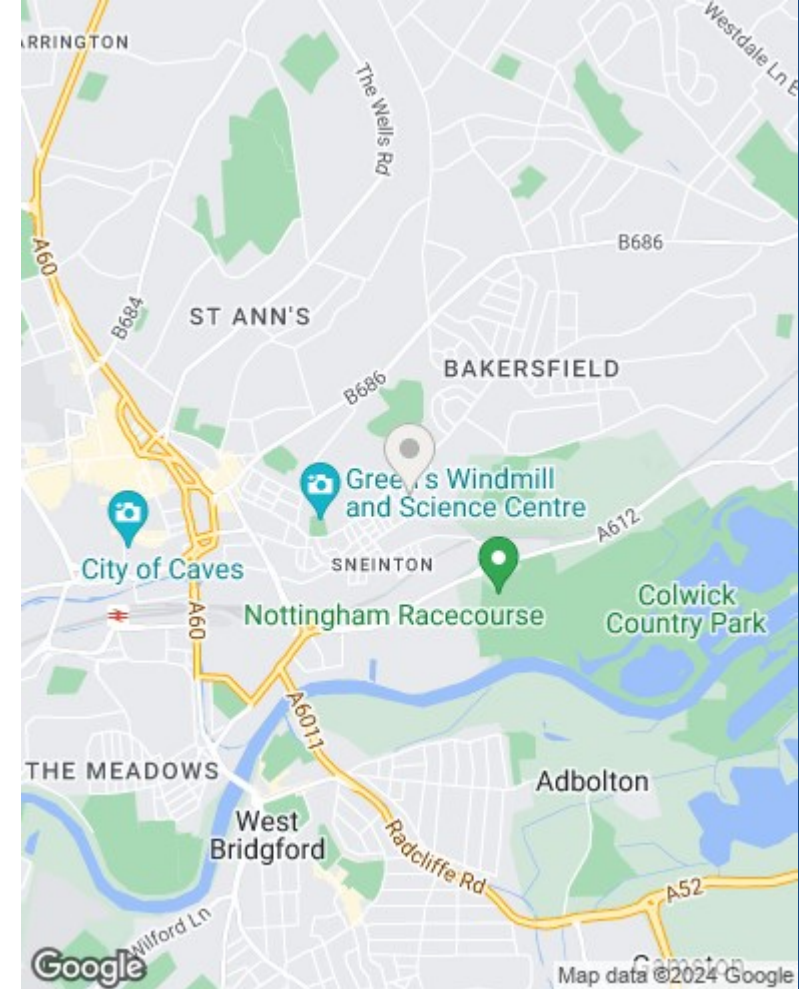
- Beautifully presented mid-terrace house
- Two double bedrooms
- Bright living room with wooden finish flooring
- Modern kitchen with appliances
- Modern ground floor bathroom/WC with white suite & mains shower
- Cellar
- Combi gas central heating
- UPVC double glazing
- Low maintenance rear garden with artificial lawn
- Within walking distance to the City Centre







Total area: approx. 65.3 sq. metres (702.6 sq. feet)



**Council Tax Band: A
Nottingham City Council**

These particulars are produced in good faith, are set out as a general guide only and do not constitute any part of a contract. No person in the employment of David James Estate Agents Ltd has any authority to make any representation whatsoever in relation to the property. All services, together with electrical fittings or fitted appliances have NOT been tested. All the measurements given in the details are approximate. Floor plans are for illustrative purposes only and are not drawn to scale. The position and size of doors, windows, appliances and other features are approximate only. The photographs of this property have been taken with a 10mm wide-angle lens. No responsibility can be accepted for any loss or expense incurred in viewing. If you have a property to sell you may wish to take advantage of our free valuation service. David James Estate Agents have established professional relationships with third-party suppliers for the provision of services to Clients. As remuneration for this professional relationship, the agent receives referral commission from the third-party company. David James Estate Agents receives the following commission from each third party supplier on a per referral basis: W A Barnes Ltd: £60 including VAT. All Moves UK Ltd: 18% including VAT of the invoice total (£107 including VAT average). MoveWithUs Limited: £188 including VAT (average).

DavidJames
the estate agent

David James Estate Agents
45b Plains Road, Mapperley, Nottingham, NG3 5JU
t: 0115 962 4213 e: lettings@david-james.com

naea | propertymark
PROTECTED

