



2



1



1



D

DavidJames
the estate agent

Long Acre, Bingham, Nottingham, NG13 8AF

£850 Per Calendar Month

About This Property

Discover this freshly refurbished first-floor maisonette, perfectly situated in the heart of Bingham. This charming home features a private entrance hall on the ground floor with stairs leading up to the main accommodation, which comprises a living room that seamlessly opens into a brand new kitchen equipped with sleek white gloss units and an integrated oven, hob & extractor. There are two well-appointed bedrooms, providing comfortable living spaces, and a newly fitted modern shower room complete with a stylish corner cubicle and a versatile 2-way mains shower. Outside, enjoy the generous rear garden and an off-street parking space, both available for use outside of business hours. Located just moments away from Bingham Market Square and Bingham Arena, and benefiting from excellent transport links, this maisonette offers an ideal blend of contemporary living and prime location. VIDEO TOUR AVAILABLE!

TENANCY DETAILS

Available From: NOW

Tenancy Term: Minimum 6 months

Furnishing: Unfurnished

EPC Rating: D

Council Band: B

Pets: Not permitted

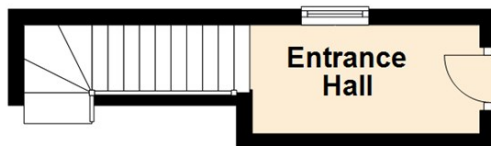
- A freshly refurbished first floor maisonette in the heart of Bingham
- Two well-appointed bedrooms
- Private entrance hall to the ground floor
- Open plan living room/kitchen
- Brand new kitchen with integrated oven, hob & extractor
- Newly fitted modern shower room with corner cubicle & 2-way mains shower
- Double glazing, combi gas central heating
- Out-of-hours use of garden
- Out-of-hours allocated parking space
- Close to Bingham Market Square, Bingham Arena and excellent transport links





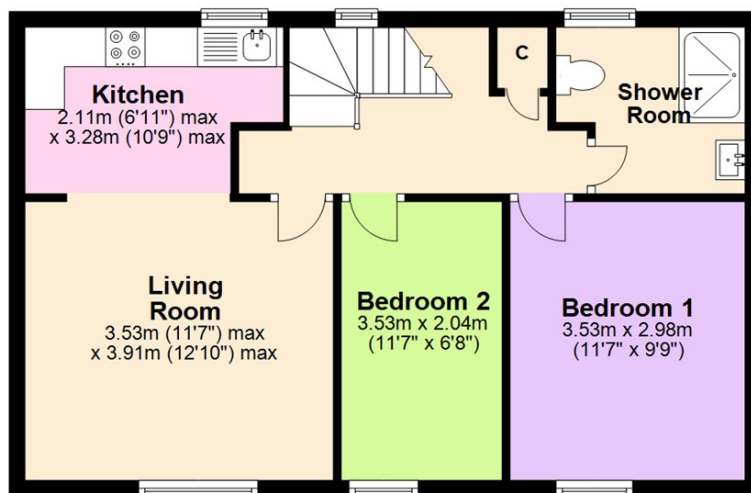
Ground Floor

Approx. 6.4 sq. metres (68.4 sq. feet)

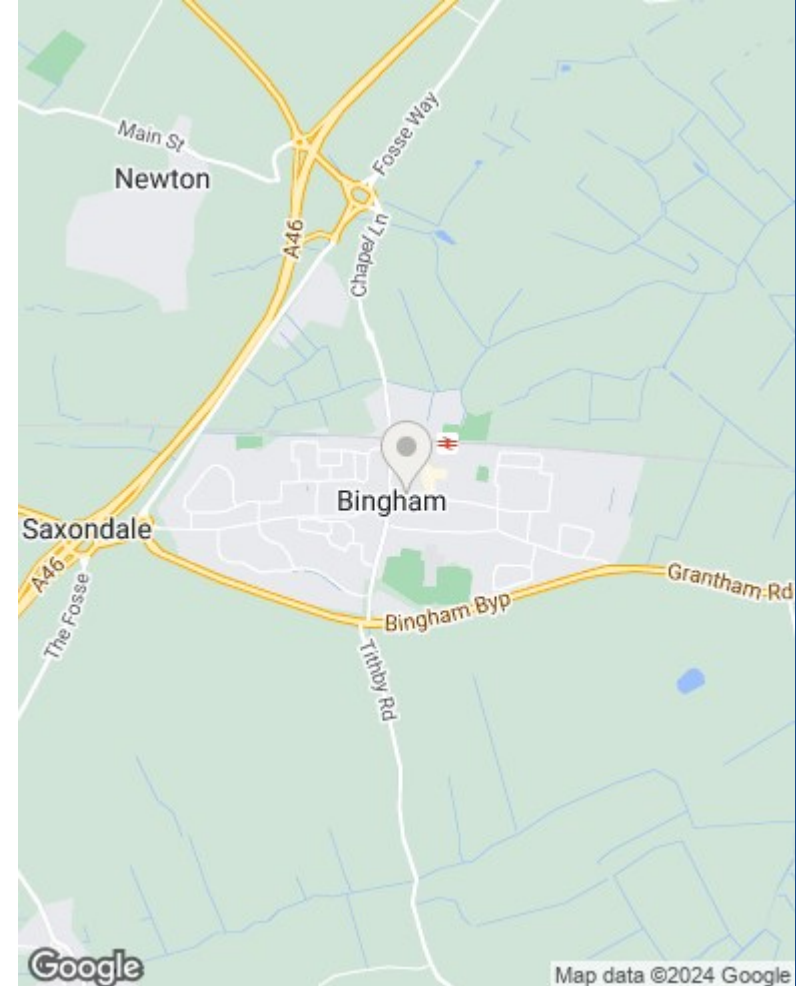


First Floor

Approx. 52.8 sq. metres (568.2 sq. feet)



Total area: approx. 59.1 sq. metres (636.5 sq. feet)



These particulars are produced in good faith, are set out as a general guide only and do not constitute any part of a contract. No person in the employment of David James Estate Agents Ltd has any authority to make any representation whatsoever in relation to the property. All services, together with electrical fittings or fitted appliances have NOT been tested. All the measurements given in the details are approximate. Floor plans are for illustrative purposes only and are not drawn to scale. The position and size of doors, windows, appliances and other features are approximate only. The photographs of this property have been taken with a 10mm wide-angle lens. No responsibility can be accepted for any loss or expense incurred in viewing. If you have a property to sell you may wish to take advantage of our free valuation service. David James Estate Agents have established professional relationships with third-party suppliers for the provision of services to Clients. As remuneration for this professional relationship, the agent receives referral commission from the third-party company. David James Estate Agents receives the following commission from each third party supplier on a per referral basis: W A Barnes Ltd: £60 including VAT. All Moves UK Ltd: 18% including VAT of the invoice total (£107 including VAT average). MoveWithUs Limited: £188 including VAT (average).

Council Tax Band: B
Rushcliffe Borough Council

DavidJames
the estate agent

David James Estate Agents
45b Plains Road, Mapperley, Nottingham, NG3 5JU
t: 0115 962 4213 e: lettings@david-james.com

naea | **propertymark**
PROTECTED

The Property Ombudsman