



DavidJames
the estate agent

Penarth Rise, Mapperley, Nottingham, NG5 4EE

£1,150 Per Calendar Month

About This Property

This well-presented semi-detached house boasts a welcoming entrance hall, complete with practical under-stair storage, leading to a spacious living room, bathed in natural light from a large window, creating a bright and inviting space for relaxation. The dining kitchen is equipped with ample units and a pantry, and seamlessly connects to the rear garden through sliding patio doors, making it perfect for indoor-outdoor living. Upstairs, the property boasts three well-appointed bedrooms, two of which feature built-in wardrobes, whilst the modern bathroom/WC is fitted with a white suite and mains shower. Outside, the property offers off-street parking, adding to its practicality. Situated close to the vibrant hubs of Sherwood and Mapperley, as well as Woodthorpe Grange Park, this home provides an excellent balance of urban amenities and green spaces. VIDEO TOUR AVAILABLE!

TENANCY DETAILS

Available From: 24th June 2024

Tenancy Term: Minimum 6 months (12 months preferred)

Furnishing: Unfurnished

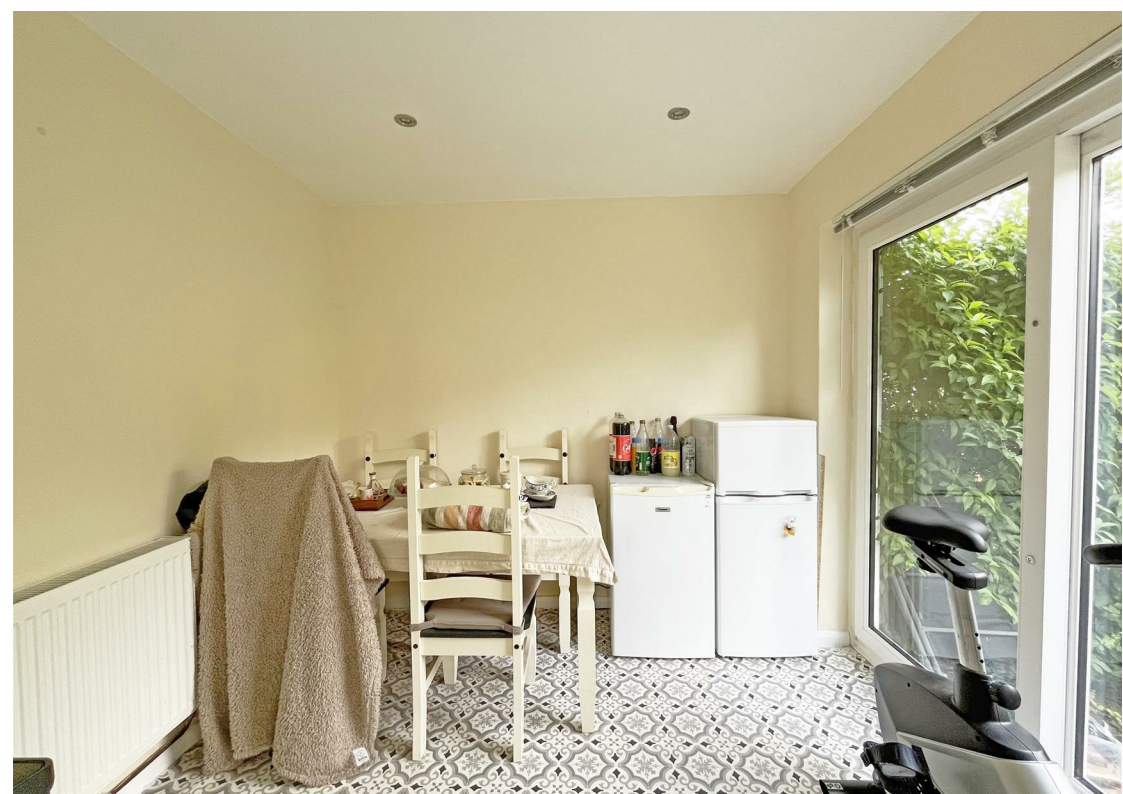
EPC Rating: C

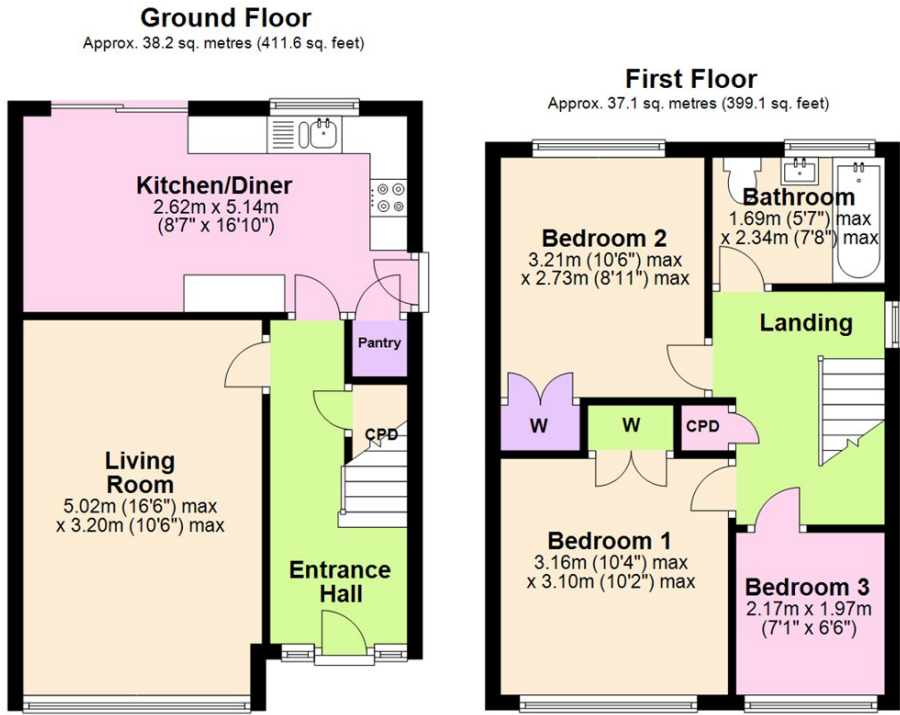
Council Band: B

Pets: Not permitted

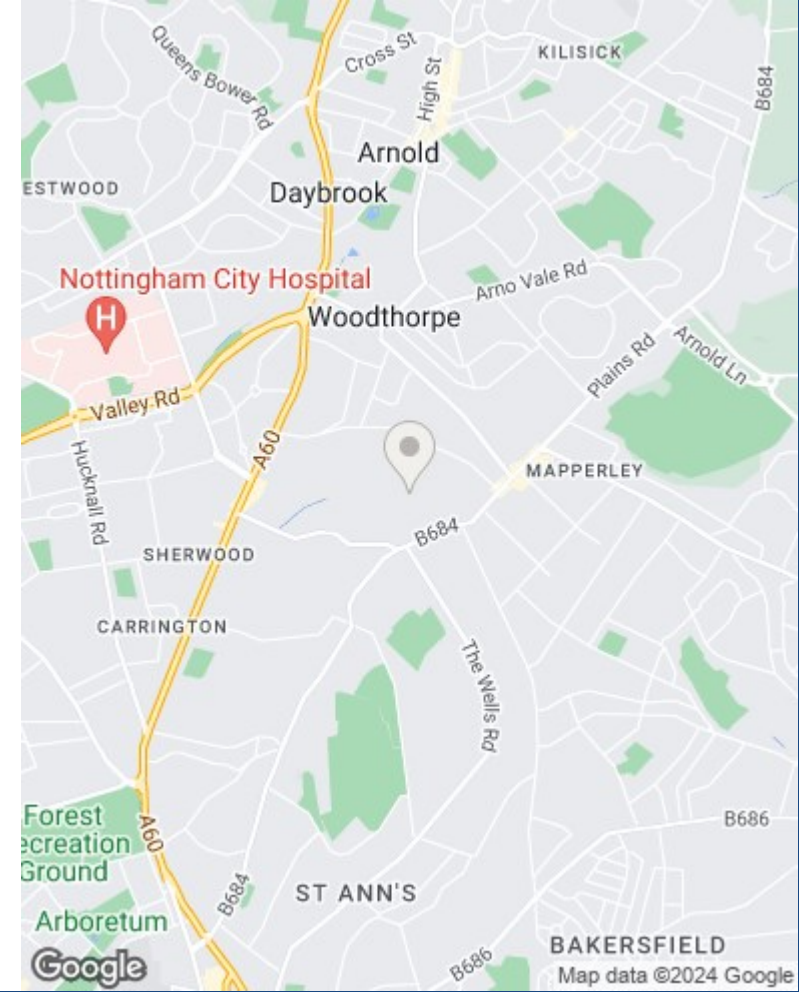
- Semi-detached house
- Three bedrooms (two bedrooms with built-in wardrobes)
- Entrance hall with under-stair storage
- Light & airy living room
- Modern dining kitchen with ample units & pantry
- First-floor bathroom/WC with white suite & mains shower
- Double glazing, gas central heating
- Front & rear garden
- Off-street parking
- Close to Sherwood, Mapperley & Woodthorpe Grange Park







Total area: approx. 75.3 sq. metres (810.7 sq. feet)



These particulars are produced in good faith, are set out as a general guide only and do not constitute any part of a contract. No person in the employment of David James Estate Agents Ltd has any authority to make any representation whatsoever in relation to the property. All services, together with electrical fittings or fitted appliances have NOT been tested. All the measurements given in the details are approximate. Floor plans are for illustrative purposes only and are not drawn to scale. The position and size of doors, windows, appliances and other features are approximate only. The photographs of this property have been taken with a 10mm wide-angle lens. No responsibility can be accepted for any loss or expense incurred in viewing. If you have a property to sell you may wish to take advantage of our free valuation service. David James Estate Agents have established professional relationships with third-party suppliers for the provision of services to Clients. As remuneration for this professional relationship, the agent receives referral commission from the third-party company. David James Estate Agents receives the following commission from each third party supplier on a per referral basis: W A Barnes Ltd: £60 including VAT. All Moves UK Ltd: 18% including VAT of the invoice total (£107 including VAT average). MoveWithUs Limited: £188 including VAT (average).

Council Tax Band: B
Nottingham City Council

DavidJames
the estate agent

David James Estate Agents
45b Plains Road, Mapperley, Nottingham, NG3 5JU
t: 0115 962 4213 e: lettings@david-james.com

