



 3

 1

 1

 D

Chippenham Road, Bestwood Park, Nottingham, NG5 5SS

DavidJames
the estate agent

£1,200 Per Calendar Month

About This Property

A well-presented semi-detached house offering a perfect blend of comfort and convenience, just a short stroll from Nottingham City Hospital. The spacious lounge/dining room welcomes you with a feature fireplace and sliding doors leading to a conservatory, whilst the breakfast kitchen boasts ample units and brand new appliances including a cooker, fridge, washing machine, and dishwasher. Upstairs are three well-appointed bedrooms, including one with fitted wardrobes, and a shower room/WC featuring a brand new shower cubicle and electric shower. A well-established lawned front garden and low maintenance rear garden offer outdoor spaces to enjoy. Further benefits include a private driveway accessed from the rear within the property's boundaries, ensuring convenient parking, and the property's positioning set back from the main road offers privacy. With frequent bus links nearby, this residence presents an ideal opportunity for those seeking a comfortable and well-connected lifestyle. VIDEO TOUR AVAILABLE!

TENANCY DETAILS

Available From: 15th May 2024

Tenancy Term: Minimum 6 months (12 months preferred)

Furnishing: Unfurnished

EPC Rating: D

Council Band: A

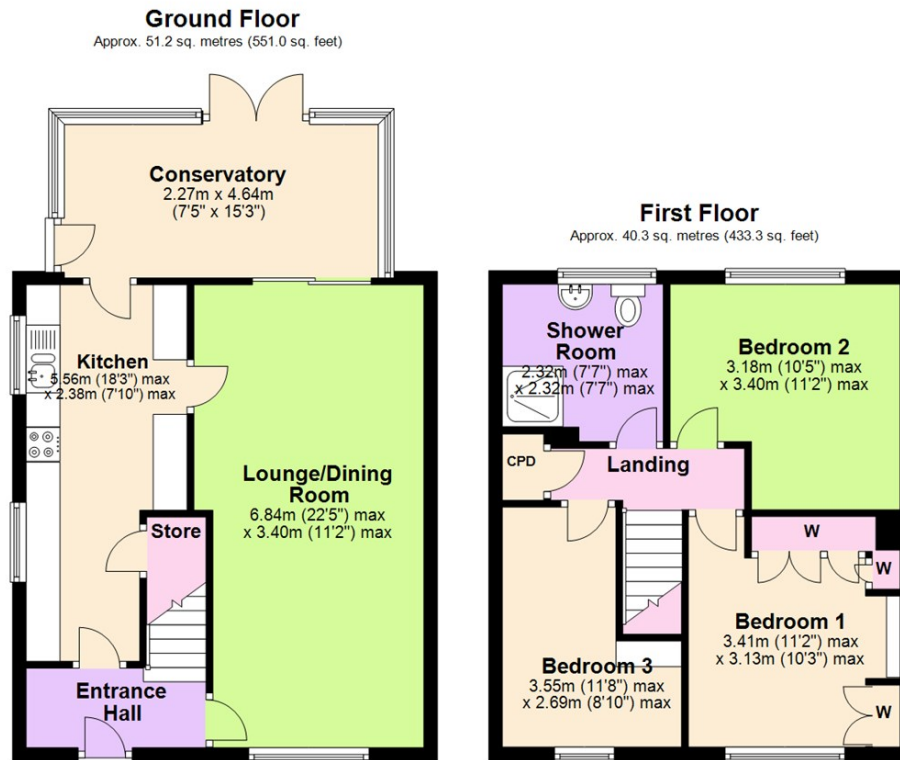
Pets: Not permitted



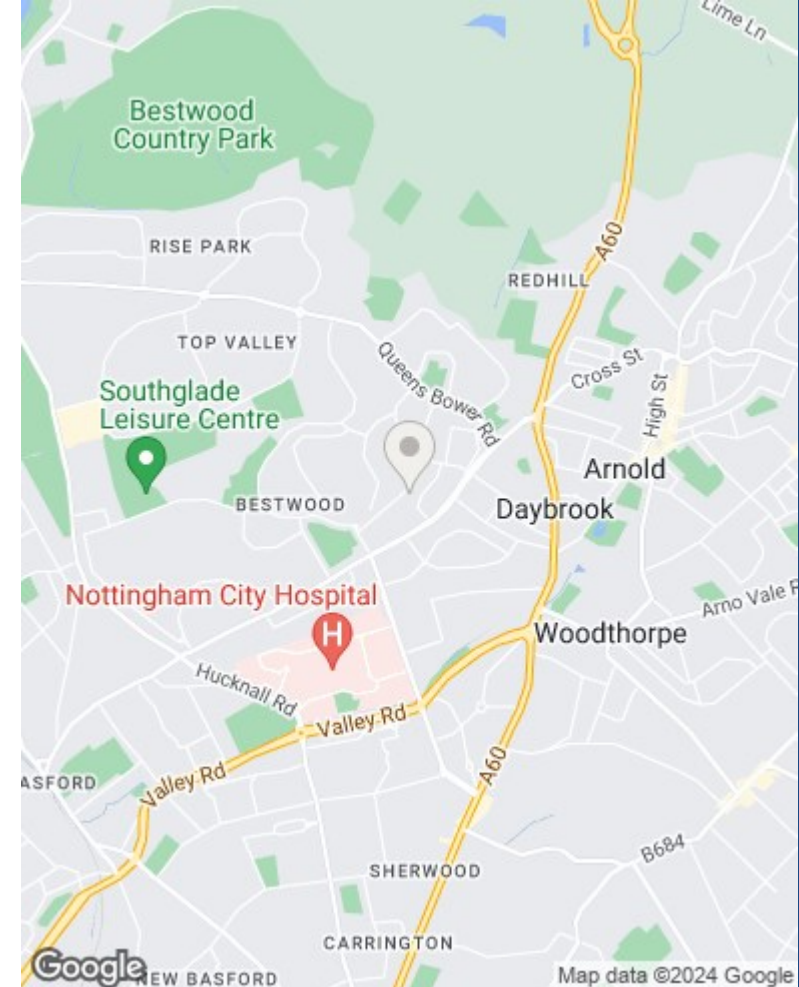
- Well-presented semi-detached house a short walk from Nottingham City Hospital
- Three well-appointed bedrooms (bedroom one with fitted wardrobes)
- Spacious lounge/dining room with feature fireplace
- Conservatory
- Breakfast kitchen with ample units
- Kitchen appliances include brand new cooker, fridge, washing machine and dish washer
- Shower room/WC with brand new shower cubicle & electric shower
- Double glazing, gas central heating
- Generous front garden with lawn, low maintenance rear garden
- Driveway to the rear







Total area: approx. 91.4 sq. metres (984.3 sq. feet)



These particulars are produced in good faith, are set out as a general guide only and do not constitute any part of a contract. No person in the employment of David James Estate Agents Ltd has any authority to make any representation whatsoever in relation to the property. All services, together with electrical fittings or fitted appliances have NOT been tested. All the measurements given in the details are approximate. Floor plans are for illustrative purposes only and are not drawn to scale. The position and size of doors, windows, appliances and other features are approximate only. The photographs of this property have been taken with a 10mm wide-angle lens. No responsibility can be accepted for any loss or expense incurred in viewing. If you have a property to sell you may wish to take advantage of our free valuation service. David James Estate Agents have established professional relationships with third-party suppliers for the provision of services to Clients. As remuneration for this professional relationship, the agent receives referral commission from the third-party company. David James Estate Agents receives the following commission from each third party supplier on a per referral basis: W A Barnes Ltd: £60 including VAT. All Moves UK Ltd: 18% including VAT of the invoice total (£107 including VAT average). MoveWithUs Limited: £188 including VAT (average).

Council Tax Band: A
Nottingham City Council

DavidJames
the estate agent

David James Estate Agents
45b Plains Road, Mapperley, Nottingham, NG3 5JU
t: 0115 962 4213 e: lettings@david-james.com

naea | propertymark
PROTECTED

The Property Ombudsman