

Beautiful 3-bed
End-terrace Oxford
Gardens Stafford
ST16 3JD **Stafford**
BJB Freehold



butters^{bjb}
john bee

STAFFORD

01785 246000

Available 8am - 10pm every day

[buttersjohnbee.com](https://www.buttersjohnbee.com)





butters john bee^{bjb}

Step inside this stunning yet delightfully lived in 3 bedroom end terrace home, brimming with original features and a warm, inviting charm you simply can't replicate.

From the moment you walk through the door, your are welcomed by two generous reception rooms, each offering its own cosy atmosphere perfect for relaxed evenings, family gatherings, or curling up with a good book.

At the heart of the home sits a large, modern kitchen, thoughtfully designed with generous preparation areas and a gentle blend of contemporary style and rustic character. It's the sort of kitchen where Sunday mornings feel unhurried, and everyone naturally gathers.

- Charming 3-bedroom
- Two reception rooms
- Large Modern Kitchen
- Traditional features
- Easy-to-maintain garden
- Built-in Driveway



Living Room 4.29m x 3.36m

A bright and inviting living space styled in a soft shabby-chic palette, featuring airy tones and gentle textures. Large windows allow natural light to pour in, creating a calm and comfortable atmosphere perfect for everyday relaxation.

Dining Room 3.95m x 3.58m

A charming, light-filled dining area with a modern rustic feel. Clean lines blend with subtle vintage detailing, giving the room a warm, welcoming character ideal for gatherings and quiet meals alike.

Kitchen 4.92m x 2.65m

A streamlined, contemporary kitchen designed with clean finishes and a fresh, minimalist aesthetic. Bright surfaces, subtle accents and an open layout create a crisp, functional space that feels current and effortlessly stylish.

Master Bedroom 4.42m x 3.49m

A calming main suite with a refined, airy feel. Soft tones and gentle detailing form a tranquil atmosphere that encourages rest and a sense of quiet luxury.

Bedroom Two 4.08m x 3.00m

A bright, uplifting room characterised by smooth modern touches and a relaxed mood. Its balanced design provides a pleasant environment suited for everyday comfort.

Bedroom Three 3.54m x 2.64m

A versatile room with a modern feel and a soft, calming palette. Perfect as a third bedroom, home office or dressing room.

Bathroom 1.94m x 1.44m

A modern, bright space featuring a sleek bath and shower combination, clean finishes and a fresh, contemporary feel.



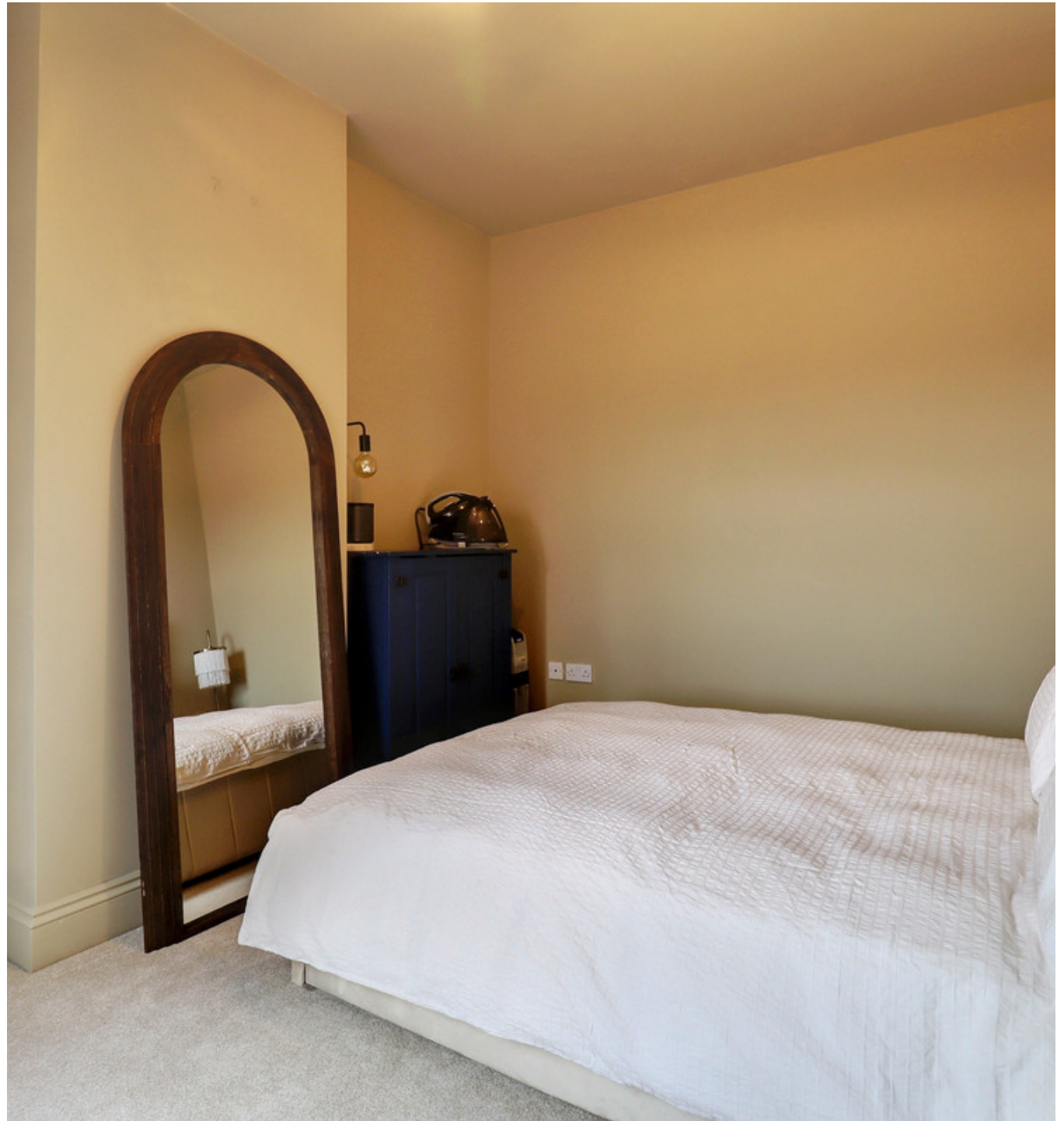
Throughout the property, you'll find beautiful traditional tiles and charming original details that bring a subtle shabby-chic elegance to every space.

The three well-proportioned bedrooms continue this theme, offering comfort, personality, and plenty of natural light.

Outside, the home offers a moderate-sized, easy-to-maintain garden, ideal for unwinding or casual outdoor dining.

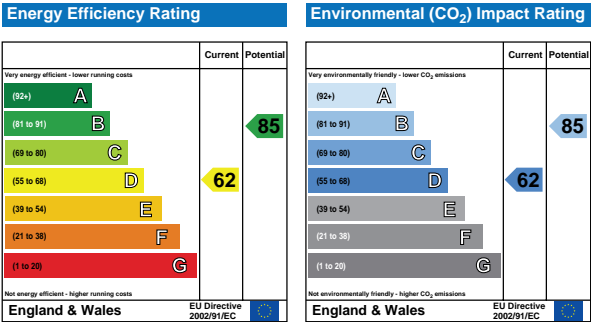
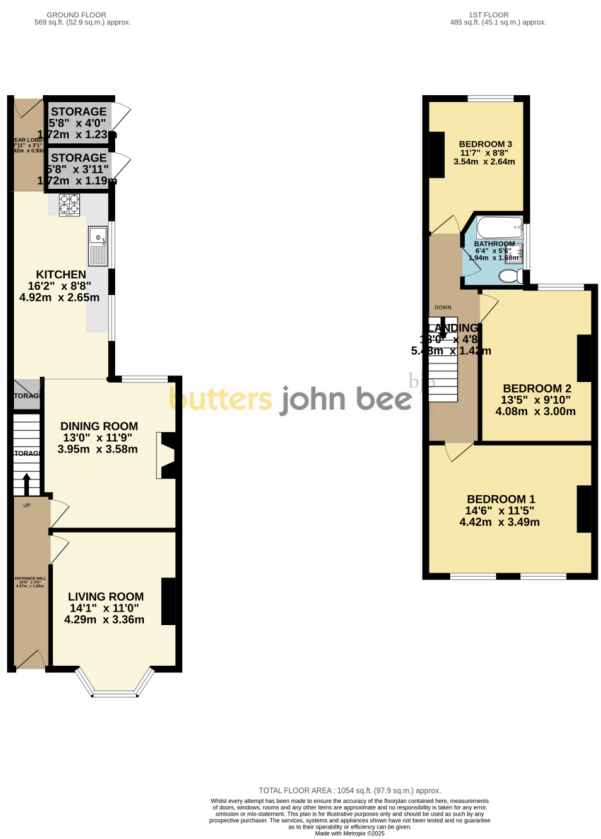
The property also benefits from a built-in driveway and personal side access leading directly to the front of the house—adding both convenience and practicality.

With its welcoming feel and timeless character, this home is perfect for anyone seeking a property that feels instantly comforting, full of charm, and wonderfully unique.









butters john bee^{bjb} is a trading name of Butters John Bee Group Limited, registered in England and Wales, No. 8435112. Registered Office: Colwyn House, Sheepen Place, Colchester, Essex CO3 3LD, a Spicerhaart Group business.

butters john bee is the seller's agent for the sale and marketing of the property described on these property particulars and your conveyancer is legally responsible for ensuring that the purchase agreement fully protects your position as a purchaser. butters john bee makes detailed enquiries of the seller to ensure that the information provided is as accurate as possible. However, if you become aware that any of the information provided to you is inaccurate please inform your butters john bee representative as soon as possible so we can make the necessary correction. The services at the property have not been tested.