



Oakland

Denison House, 20 Lanterns Way

London

Guide Price £425,000 – £450,000





## Denison House, London

Stylish 1-bed apartment in Lanterns Court, Canary Wharf. Modern interiors, open-plan living, balcony with skyline views. 24hr concierge, gym, near shops, transport links. Ideal for first-time buyers, professionals, investors.

Council Tax band: D

Tenure: Leasehold

EPC Energy Efficiency Rating: B

EPC Environmental Impact Rating: B

- One spacious double bedroom
- Open-plan kitchen/reception
- Modern integrated appliances
- Private balcony
- 24-hour concierge & residents' gym
- Excellent transport links (DLR, Jubilee & Elizabeth Lines)
- Moments from Canary Wharf







## Seventh Floor

Approx. 57.7 sq. metres (620.7 sq. feet)



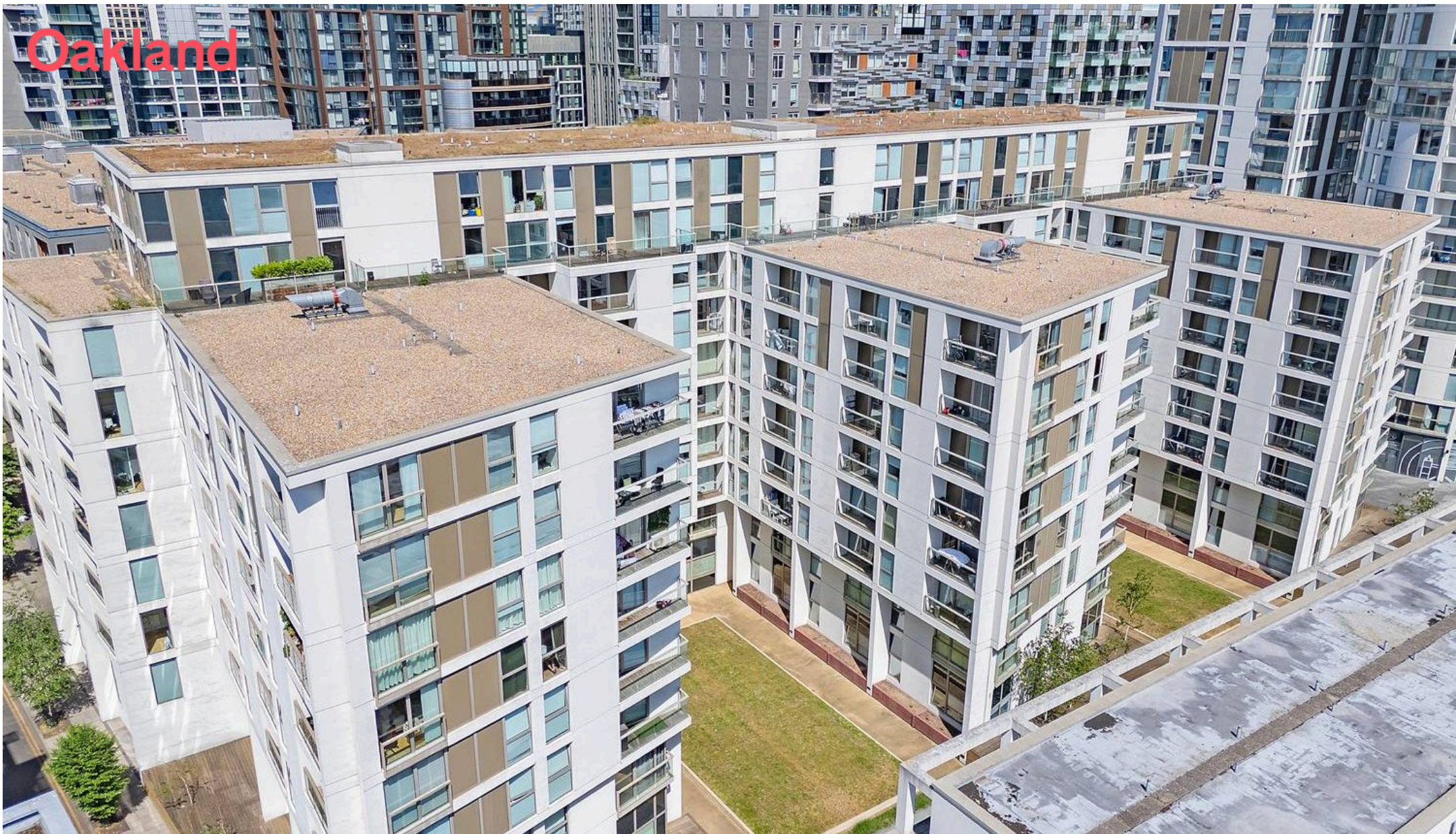
Total area: approx. 57.7 sq. metres (620.7 sq. feet)

All measurements have been taken as a guide to prospective buyers only and are not precise. This plan is for illustrative purposes only and no responsibility for any error, omission or misstatement. The services, systems and appliances shown have not been tested and no guarantee as to their operability or efficiency can be given. Measurements may have been taken from the widest area and may include wardrobe/cupboard space. No guarantee is given to any measurements including total areas. Buyers are advised to take their own measurements.

© @modephotouk | www.modephoto.co.uk  
Plan produced using PlanUp. □

**Denison House**





Oakland

## Oakland Estates Ltd

964 Eastern Avenue, Ilford - IG2 7JD

02085972626 • [info@oaklandestates.co.uk](mailto:info@oaklandestates.co.uk) • [www.oaklandestates.co.uk/](http://www.oaklandestates.co.uk/)