



Eastern Avenue, Ilford

£800,000

Ilford



1216 Eastern Avenue

Ilford, Ilford

Spacious 5-bed bungalow on Eastern Avenue near Newbury Park Station. Generous interior, 100ft garden, parking for 2-3 cars. Ideal for families or investors. Excellent transport links & top-rated schools nearby. Viewing recommended!

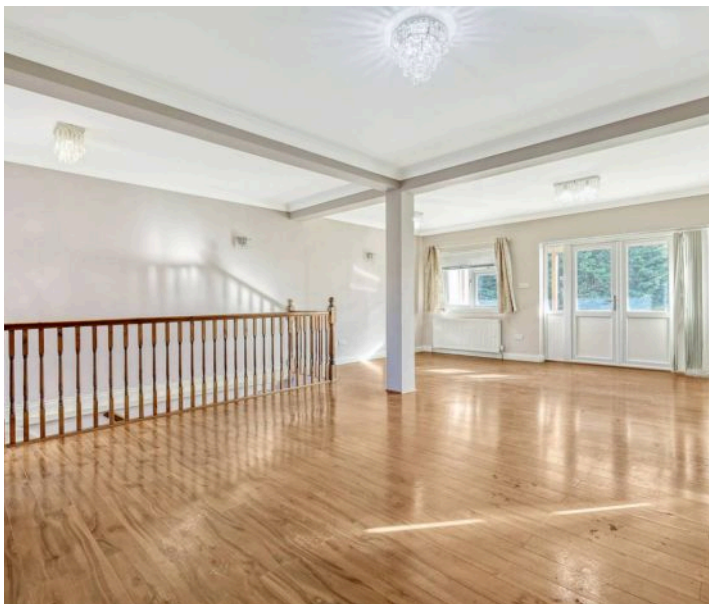
Council Tax band: TBD

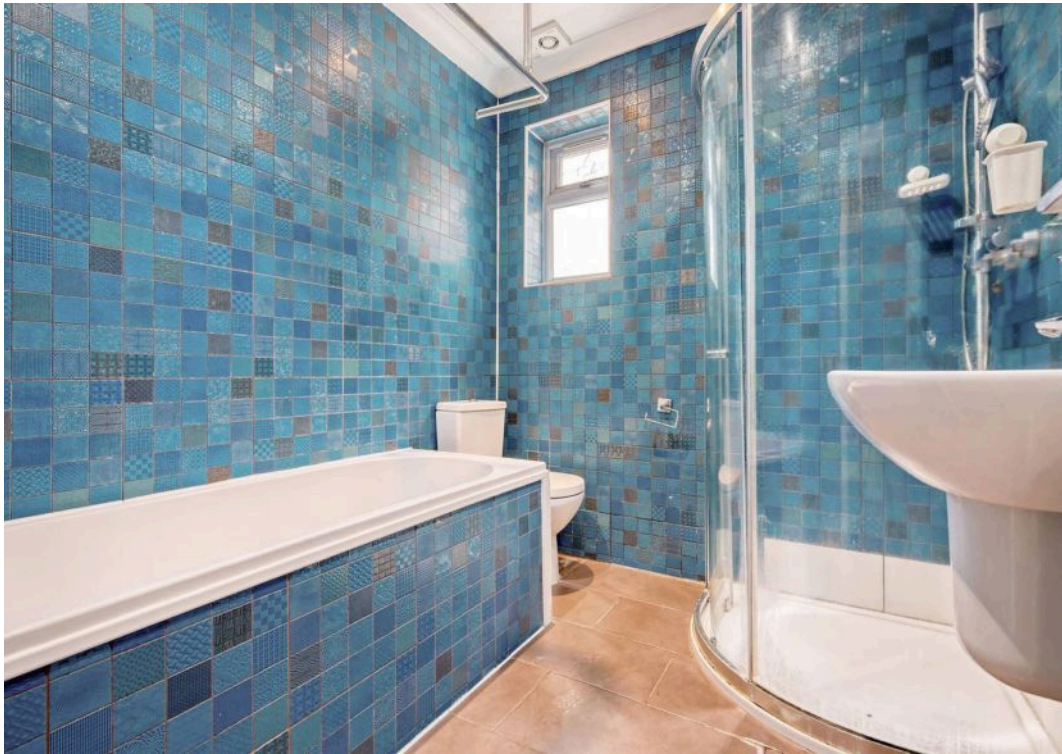
Tenure: Freehold

EPC Energy Efficiency Rating: D

EPC Environmental Impact Rating: D

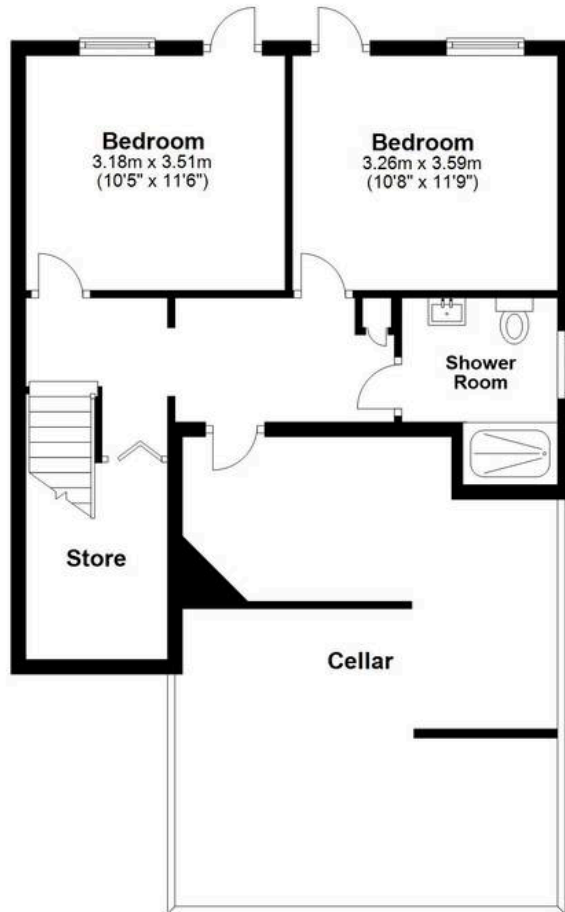
- Modern Kitchen & Bathrooms
- Large Reception Room
- Stunning Décor
- Large Basement Storage
- Very Large Rear Garden & Decking







Lower Ground Floor
Approx. 42.9 sq. metres (462.1 sq. feet)



Ground Floor
Approx. 95.1 sq. metres (1023.3 sq. feet)



Total area: approx. 138.0 sq. metres (1485.4 sq. feet)

All measurements have been taken as a guide to prospective buyers only and are not precise. This plan is for illustrative purposes only and no responsibility for any error, omission or misstatement. The services, systems and appliances shown have not been tested and no guarantee as to their operability or efficiency can be given. Measurements may have been taken from the widest area and may include wardrobe/cupboard space. No guarantee is given to any measurements including total areas. Buyers are advised to take their own measurements.
Plan produced using PlanUp.

Eastern Avenue



Oakland Estates Ltd

964 Eastern Avenue, Ilford - IG2 7JD

020 8957 2626 • info@oaklandestates.co.uk • www.oaklandestates.co.uk/