

2 Level 02 Plan  
1:100

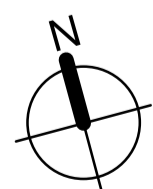
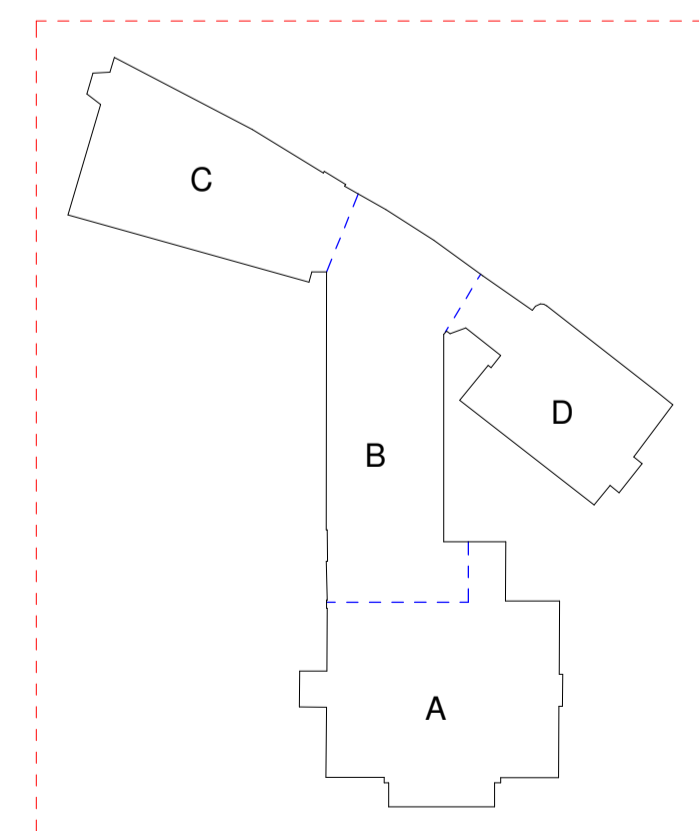


1 Level 01 Plan  
1:100

KEY - Min Gross Internal Floor Areas

- 1B1P - 39sqm
- 1B2P - 50sqm
- 2B3P - 61sqm
- 2B4P - 70sqm
- 3B5P - 86sqm / 93sqm Duplex
- 3B6P - 95sqm / 102sqm Duplex

KEY



0 5 10 metres

RESPONSIBILITY IS NOT ACCEPTED FOR ERRORS MADE BY OTHERS IN SCALING FROM THIS DRAWING. ALL CONSTRUCTION INFORMATION SHOULD BE TAKEN FROM FIGURED DIMENSIONS ONLY. DETAILS AND SIZES SHOWN ARE INDICATIVE ONLY AND ARE SUBJECT TO CONFIRMATION BY THE RELEVANT SUB-CONTRACTOR.  
IT IS THE CONTRACTOR'S RESPONSIBILITY TO CHECK ALL DIMENSIONS ON SITE.  
ANY DISCREPANCY IS TO BE REPORTED TO THE ARCHITECTS FOR CLARIFICATION.  
ANY INFORMATION ISSUED BY ALEC FRENCH ARCHITECTS IN DIGITAL FORMAT IS COPYRIGHT AND ISSUED SOLELY FOR THE ADDRESSEE AND FOR THE PROJECT TITLED.  
FULL ORIGINAL RECORD COPIES OF ANY DOCUMENTATION ISSUED ARE KEPT AT ALEC FRENCH ARCHITECTS OFFICES.  
© COPYRIGHT ALEC FRENCH PARTNERSHIP LTD.

Rev	Description
P1	Updated following site visit on 17/11/21.
P2	Issued for Planning
P3	Existing Wall and door retained

Date	Drawn	Checked
19/11/21	CLP	JS
19/06/22	BS	RG
19/06/23	MC	RG

Status Codes
S0: WIP
S1: Coordination
S2: Information
S3: Int. Review
S4: Construction
D1: Costing
D2: Tender
D3: Contractor Design
D4: Procurement

**AlecFrenchArchitects**  
27 Trenchard Street, Bristol, BS1 5AN, T. 01179293011 F. 01179221121  
E. mail@alecfrench.co.uk, www.alecfrench.co.uk

**Cote House**  
Cote House Ln, Bristol  
Proposed Plan - Level 01 & 02

Scale	Date	AFA Project No.	Drawn by	Checked by
1:100 @A1	15/11/21	5223	CLP	JS
Drawn by	Checked by	Drawn by	Checked by	
CLP	JS	CLP	JS	
P3	S2	P3	S2	

COH-AFA-XX-XX-DR-A-1211

RIBA Stage 2