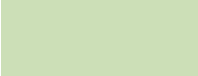
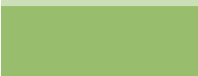
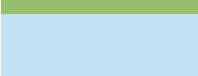



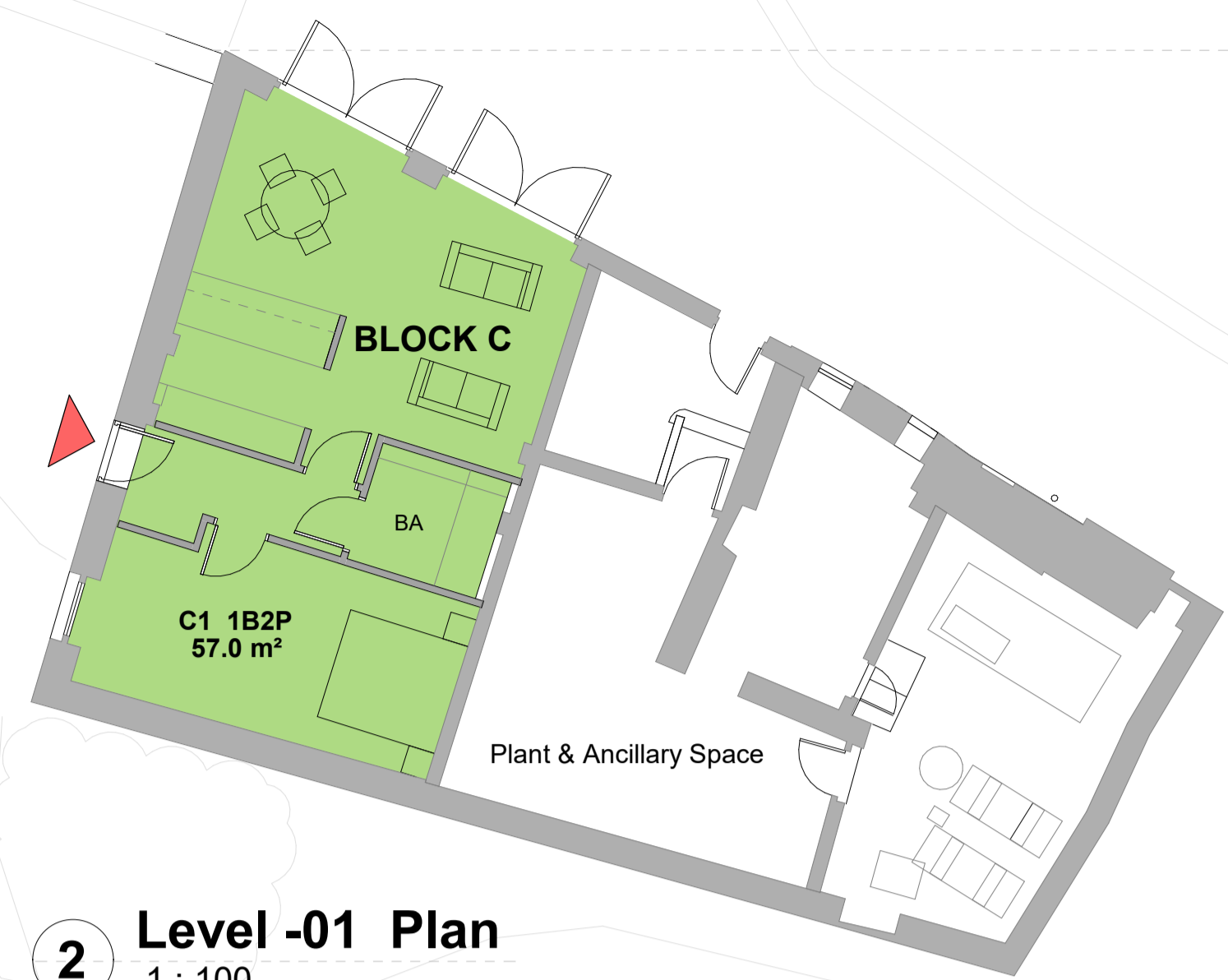


KEY - Min Gross Internal Floor Areas

	1B1P - 39sqm
	1B2P - 50sqm
	2B3P - 61sqm
	2B4P - 70sqm
	3B5P - 86sqm / 93sqm Duplex
	3B6P - 95sqm / 102sqm Duplex

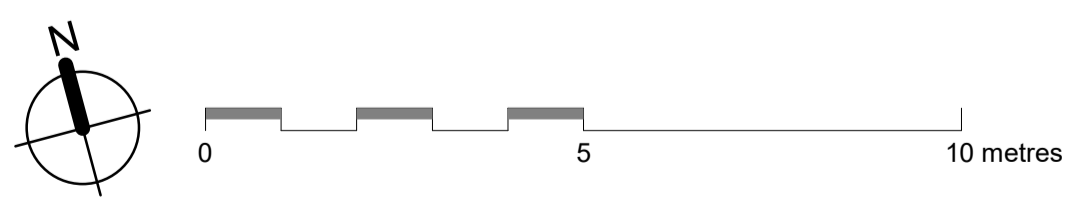
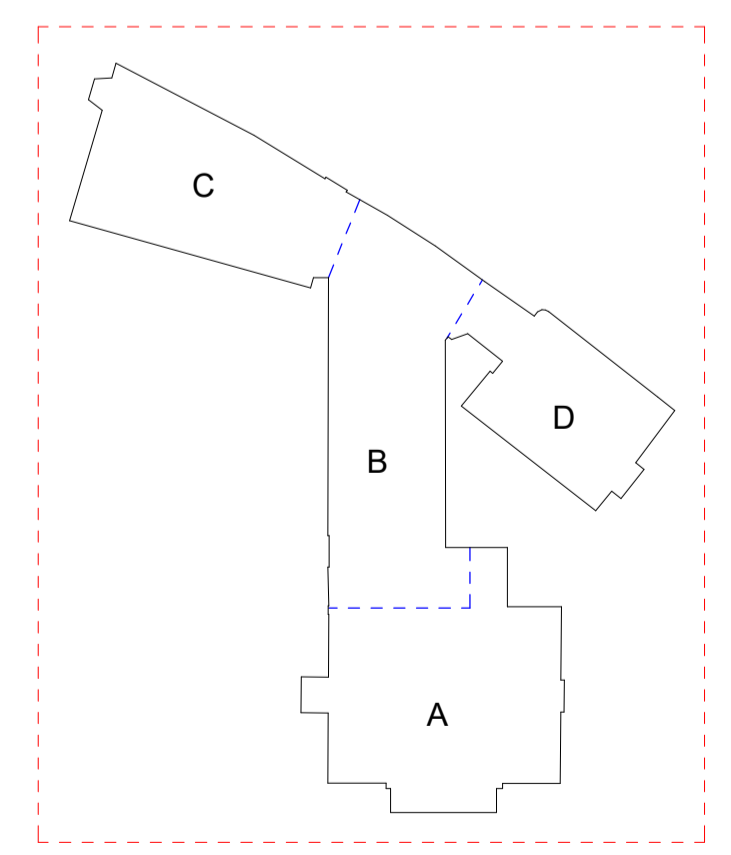


2 Level -01 Plan
1 : 100



1 Level 00 Plan
1 : 100

KEY



RESPONSIBILITY IS NOT ACCEPTED FOR ERRORS MADE BY OTHERS IN SCALING FROM THIS DRAWING. ALL CONSTRUCTION INFORMATION SHOULD BE TAKEN FROM FIGURED DIMENSIONS ONLY. DETAILS AND SIZES SHOWN ARE INDICATIVE ONLY AND ARE SUBJECT TO CORRECTION BY THE RELEVANT SUB CONTRACTOR. IT IS THE CONTRACTOR'S RESPONSIBILITY TO CHECK ALL DIMENSIONS ON SITE. ANY DISCREPANCY IS TO BE REPORTED TO THE ARCHITECTS FOR CLARIFICATION. ANY INFORMATION ISSUED BY ALEC FRENCH ARCHITECTS IN DIGITAL FORMAT IS COPYRIGHT AND ISSUED SOLELY FOR THE ADDRESSEE AND FOR THE PROJECT TITLED.

FULL ORIGINAL RECORD COPIES OF ANY DOCUMENTATION ISSUED ARE KEPT AT ALEC FRENCH ARCHITECTS OFFICES.

© COPYRIGHT ALEC FRENCH PARTNERSHIP LTD.

Rev	Description
P1	Updated following site visit on 17/11/21.
P2	Updated following tree survey
P3	Issued for Planning

Date	Drawn	Checked
19/11/21	CLP	JS
19.08.22	BS	JS
10.06.22	BS	RG

Status Codes
S0: WIP
S1: Coordination
S2: Information
S3: Int. Review
S4: Construction
D1: Costing
D2: Tender
D3: Contractor Design
D4: Procurement

AlecFrenchArchitects
27 Trenchard Street, Bristol, BS1 5AN, T: 01179293011 F: 01179221121
E: mail@alecfrench.co.uk www.alecfrench.co.uk

Cote House
Cote House Ln, Bristol
Proposed Plan - Level -01 & 00

Scale	Date	AFA Project No.	Drawn by	Checked by
1 : 100 @A1	15/11/21	5223	CLP	JS
Rev:			Rev:	Status:
COH-AFA-XX-XX-DR-A-1210			P3	S2

RIBA Stage 2