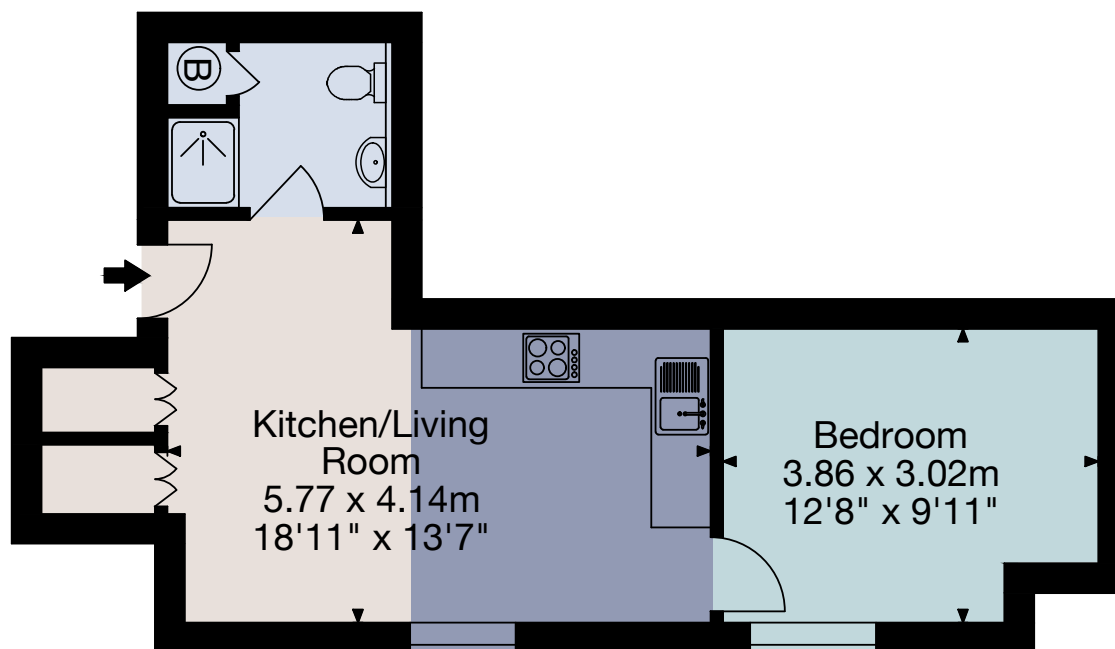
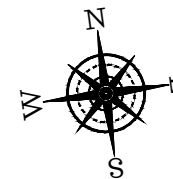
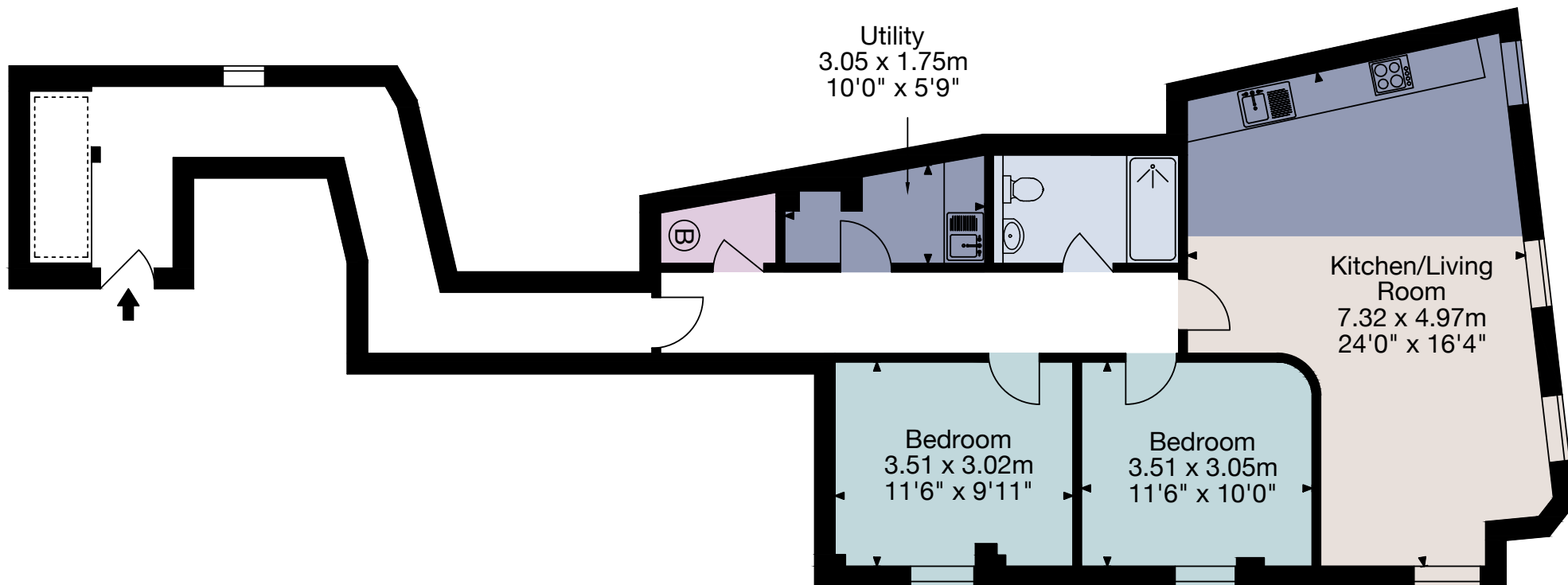
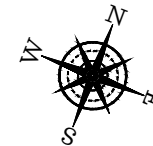


Apartment 1, 30-31 Stall Street, Bath BA1 1QG
Gross Internal Area (Approx)
Total Area 37 sq m/400 sq ft



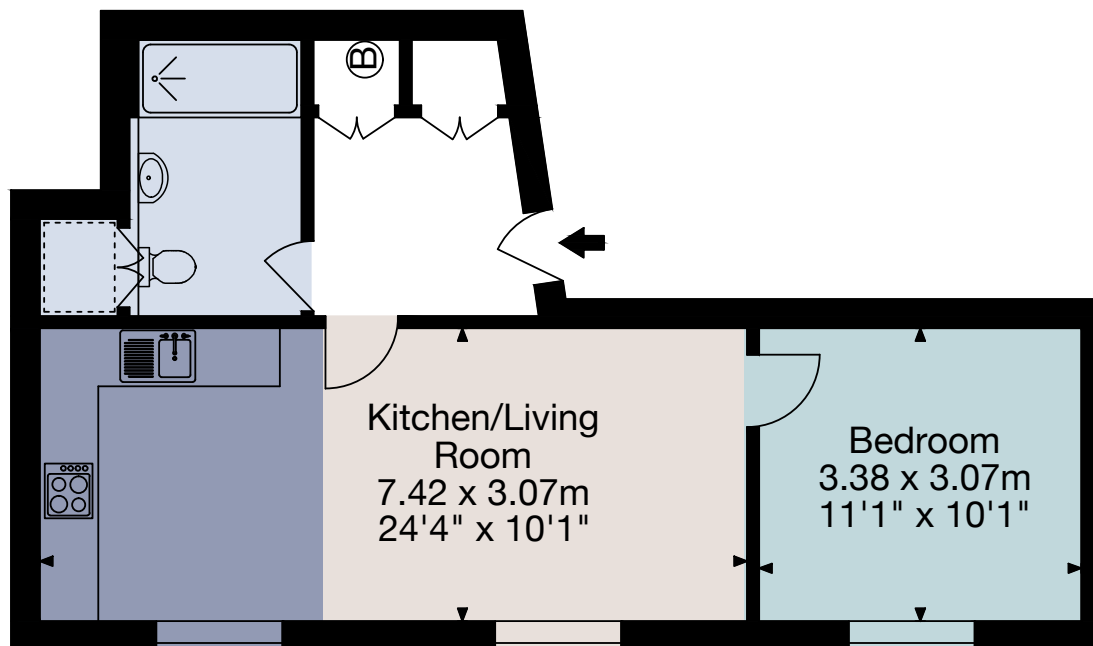
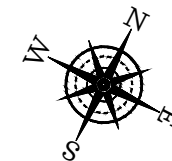
First Floor

Apartment 2, 30-31 Stall Street, Bath BA1 1QG
Gross Internal Area (Approx)
Total Area 91 sq m/981 sq ft



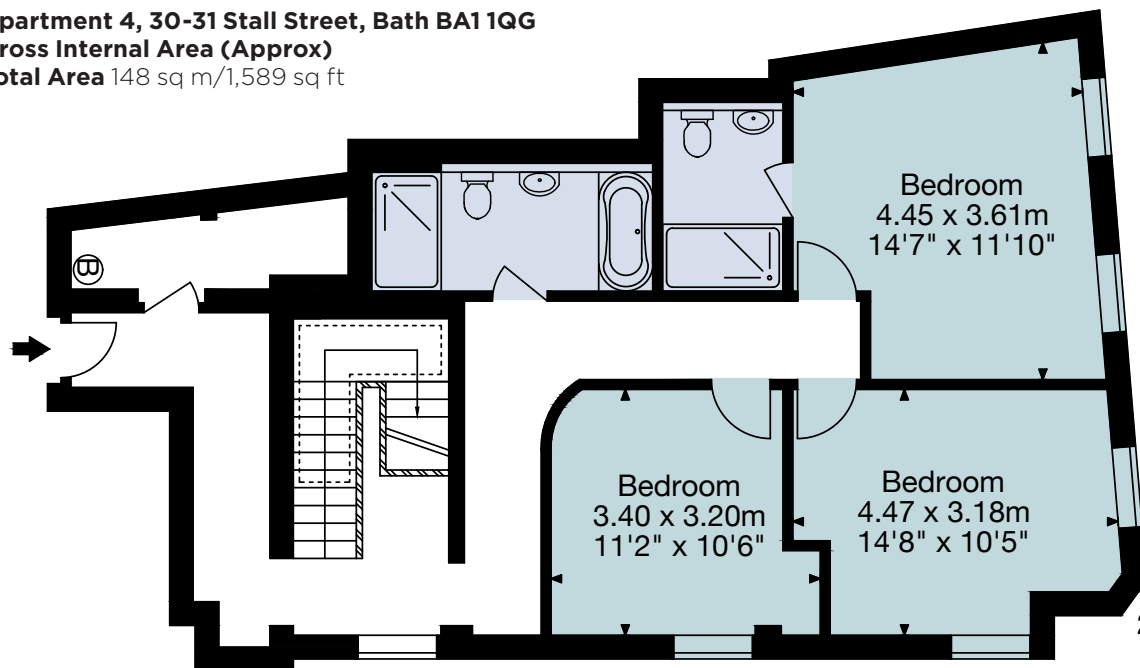
First Floor

Apartment 3, 30-31 Stall Street, Bath BA1 1QG
Gross Internal Area (Approx)
Total Area 46 sq m/501 sq ft

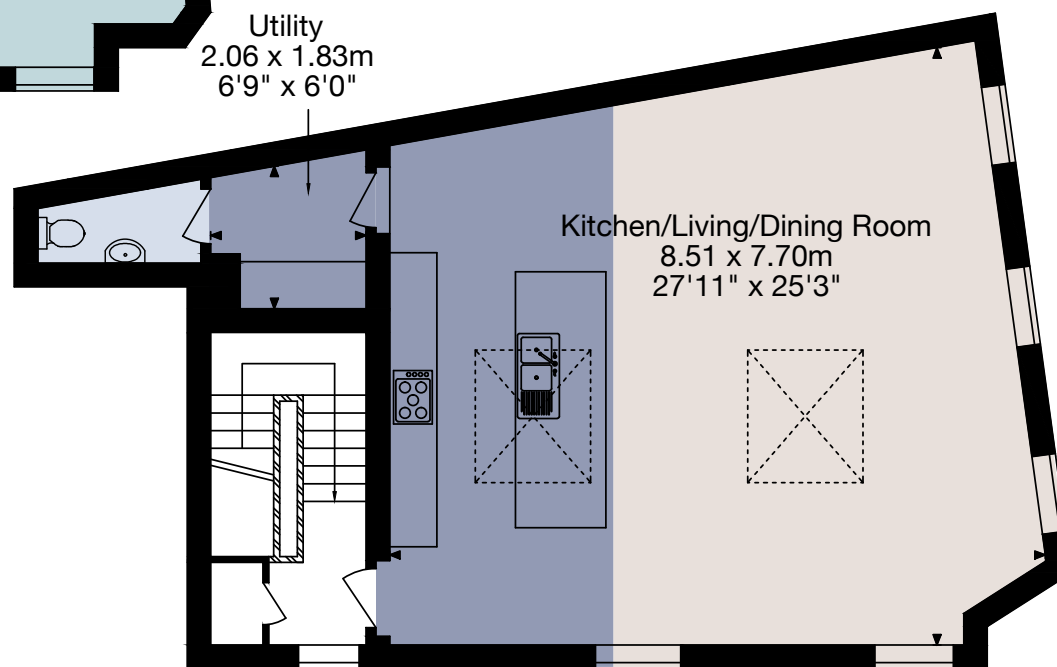


Second Floor

Apartment 4, 30-31 Stall Street, Bath BA1 1QG
Gross Internal Area (Approx)
Total Area 148 sq m/1,589 sq ft



Second Floor



Third Floor