



CAVENDISH

LETTINGS, SALES & PROPERTY MANAGEMENT

Detached four bedroom family house in a sought after location


Sevenoaks
Asking Price £1,195,000

- Detached 4 bedroom house
- Sought after location
- Scope for developing
- Garden & communal woodland
- Driveway parking & garage

Detached four bedroom family house in a sought after cul-de-sac within walking distance of Riverhead/Amherst schools and under a mile from the main line station.

- * Kitchen & utility room
- * Two spacious ground floor reception rooms
- * Master double bedroom with ensuite shower room
- * Garden with rural outlook & use of residents woodland

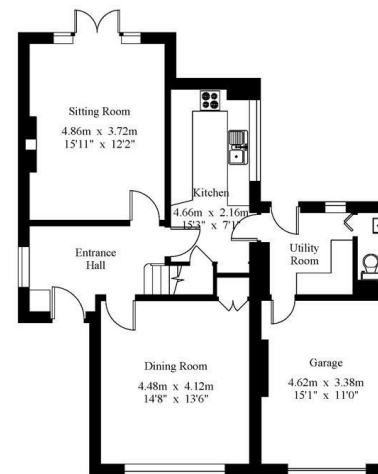
LOCAL AUTHORITY - Sevenoaks District Council - Tax band G

Energy Efficiency Rating		
	Current	Potential
Very energy efficient - lower running costs		
(92 plus) A		
(81-91) B		
(69-80) C		71
(55-68) D	56	
(39-54) E		
(21-38) F		
(1-20) G		
Not energy efficient - higher running costs		
England & Wales	EU Directive 2002/91/EC 	

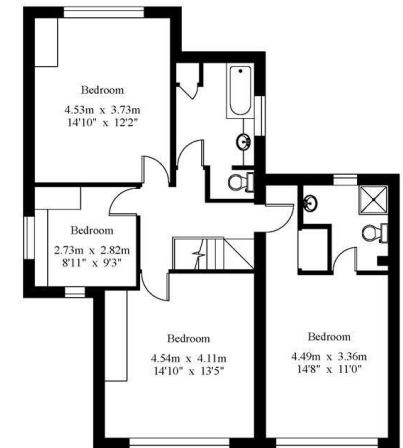


27 Croft Way

Gross Internal Area : 169.0 sq.m (1819 sq.ft.)
(Including Garage)



Ground Floor



First Floor

0 2 4 6 8 10 Feet
0 2 3 Metres
For Identification Purposes Only.
© 2024 Truaplan (UK) Limited. 018921614881