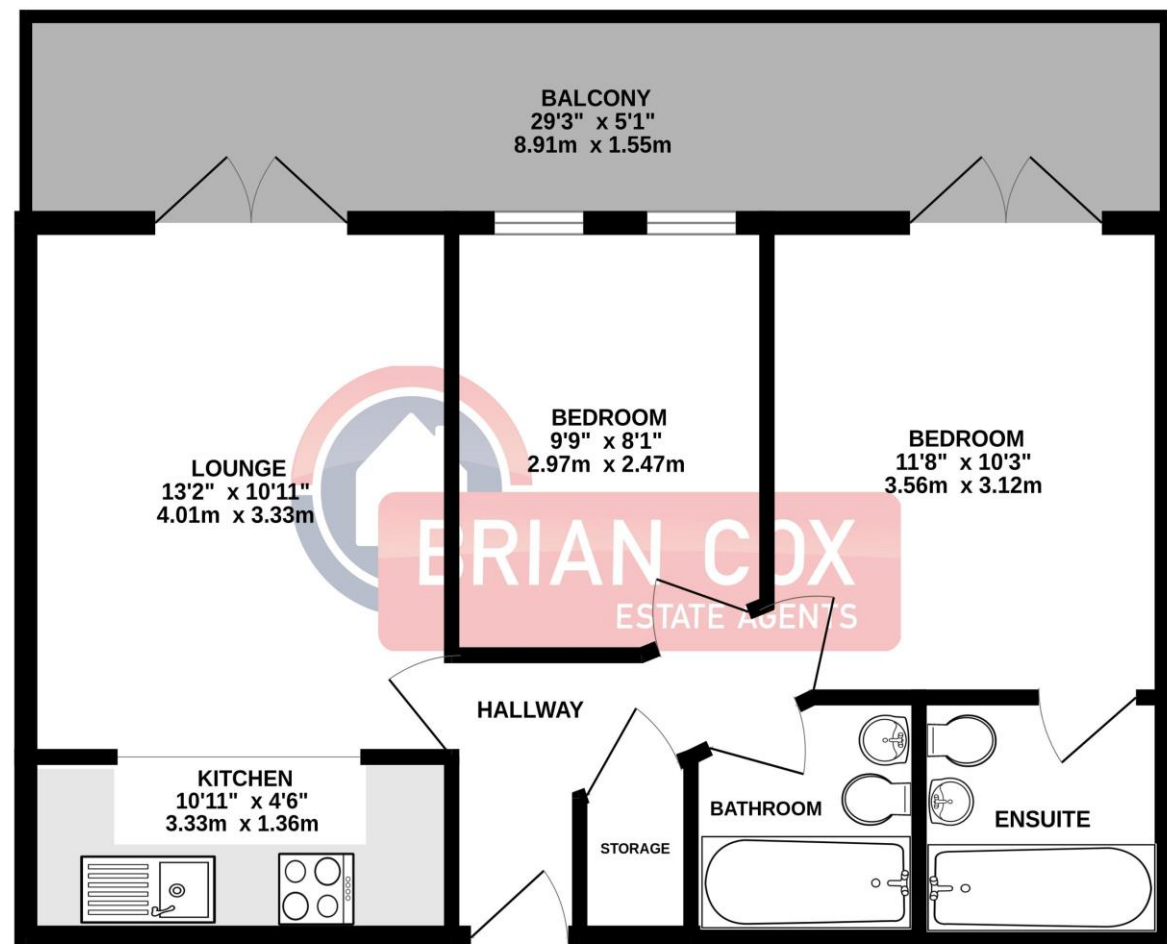


the floorplan...

FIFTH FLOOR
515 sq.ft. (47.9 sq.m.) approx.



TOTAL FLOOR AREA : 515 sq.ft. (47.9 sq.m.) approx.
Whilst every attempt has been made to ensure the accuracy of the floorplan contained here, measurements of doors, windows, rooms and any other items are approximate and no responsibility is taken for any error, omission or mis-statement. This plan is for illustrative purposes only and should be used as such by any prospective purchaser. The services, systems and appliances shown have not been tested and no guarantee as to their operability or efficiency can be given.
Made with Metropix ©2026

more details from...

call: **Brian Cox Harrow: 020 8912 0006**
email: **info@brian-cox.co.uk**
web: **www.brian-cox.co.uk**



Consumer Protection from Unfair Trading Regulations 2008 We have not tested any apparatus, equipment, fixtures, fittings or services and so cannot verify that they are in working order or fit for purpose. You are advised to obtain verification from your solicitor or surveyor. References to the tenure of a property are based on information supplied by the seller. We have not had sight of the title documents and a buyer is advised to obtain verification from their solicitor. Items shown in photographs are not included unless specifically mentioned within the sales particulars, but may be available by separate negotiation. We advise you to book an appointment to view before embarking on any journey to see a property, and check its availability.



020 8912 0006
brian-cox.co.uk



CASH BUYERS ONLY - TWO BEDROOM - TWO BATHROOM - FIFTH FLOOR - LIFT - PARKING - NO CHAIN. Brian Cox and Company are delighted to offer to the market this well located two bedroom apartment in the heart of Harrow. The property boasts a large balcony, an open plan kitchen/lounge, two double bedrooms with an en-suite to the master, a family bathroom, long lease, concierge and the added benefit no onward chain. Viewings are highly recommended so call now to arrange yours!!



£200,000
Leasehold

Lyon Road, Harrow
HA1 2EX



in brief...

- Two Bedroom
- Fifth Floor Apartment
- En-Suite to Master Bedroom
- Balcony
- Convenient Location
- No Chain



the location...

nearest stations ...

Harrow-on-the-Hill (0.2 miles)
Northwick Park (0.6 miles)
Kenton (0.7 miles)



Harrow is a large suburban town in the London Borough of Harrow, North West London, England. It is centred 10.5 miles (16.9 km) North West of Charing Cross.

Harrow has two large shopping centres which are St Anns and St Georges with its many large department stores, restaurants, cafes and cinema.

There are many local schools in the area some of these include Harrow Primary School, Saint Jerome Church of England Bilingual School, Norbury School and St Anselm's Catholic Primary School.

