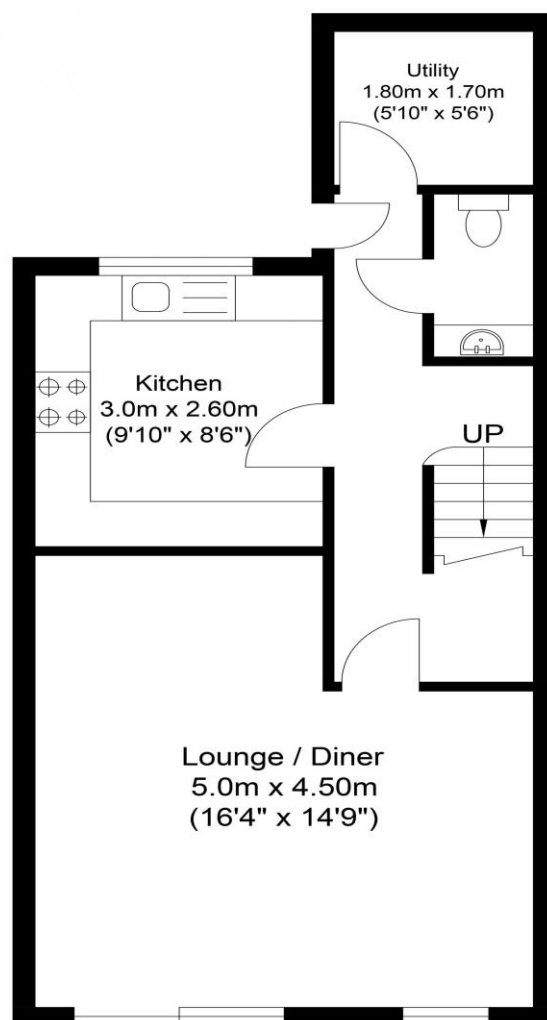


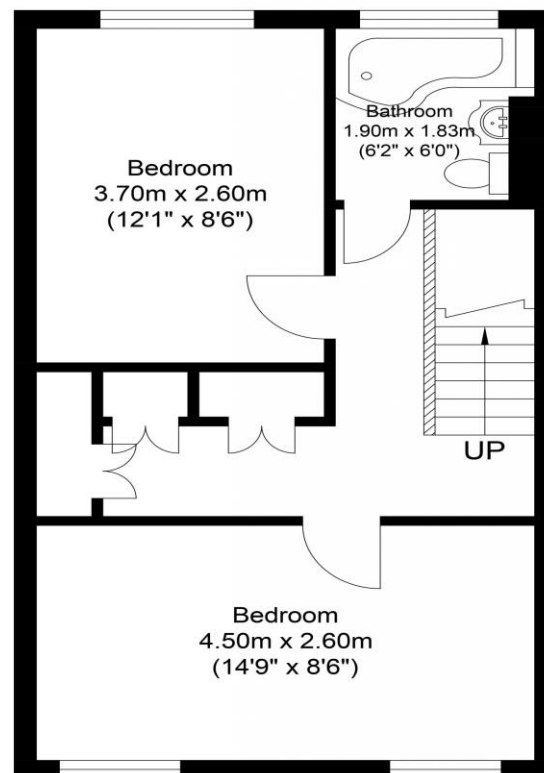
the floorplan...



Approx Gross Internal Floor Area : 77.76 sq m. (837.00 sq. ft.)
Garden Measurement - (9.0m x 4.60m = 29'6" x 15'1")



Ground Floor



First Floor

more details from...

call: **Brian Cox Harrow: 0208 912 0006**
email: info@brian-cox.co.uk
web: www.brian-cox.co.uk



Consumer Protection from Unfair Trading Regulations 2008 We have not tested any apparatus, equipment, fixtures, fittings or services and so cannot verify that they are in working order or fit for purpose. You are advised to obtain verification from your solicitor or surveyor. References to the tenure of a property are based on information supplied by the seller. We have not had sight of the title documents and a buyer is advised to obtain verification from their solicitor. Items shown in photographs are not included unless specifically mentioned within the sales particulars, but may be available by separate negotiation. We advise you to book an appointment to view before embarking on any journey to see a property, and check its availability.



0208 912 0006
brian-cox.co.uk



Brian Cox & Company are proud to present to the market this two bedroom end terraced house which can be found in a quiet residential street only a few moments walk away from Harrow Town Centre. The property benefits from generous size rooms throughout, off street parking for numerous cars and a private rear garden. Call now so you do not miss out!



£475,000
Freehold

Elmgrove Crescent, Harrow HA1 2QT



in brief...

- Two Bedrooms
- End Terraced
- Fitted Kitchen
- Off Street Parking
- South Facing Garden
- Downstairs Toilet



the location...

nearest stations ...

Harrow-on-the-Hill (0.5 miles)
Harrow & Wealdstone (0.5 miles)
Kenton (0.6 miles)



Harrow is a large suburban town in the London Borough of Harrow, Northwest London, England. It is centred 10.5 miles (16.9 km) Northwest of Charing Cross.

Harrow has two large shopping centres which are St Anns and St Georges with its many large department stores, restaurants, cafes and cinema.

There are many local schools in the area some of these include Elmgrove Primary School & Nursery, Norbury School, Marlborough Primary School and St Anselm's Catholic Primary School.



0208 912 0006

brian-cox.co.uk

