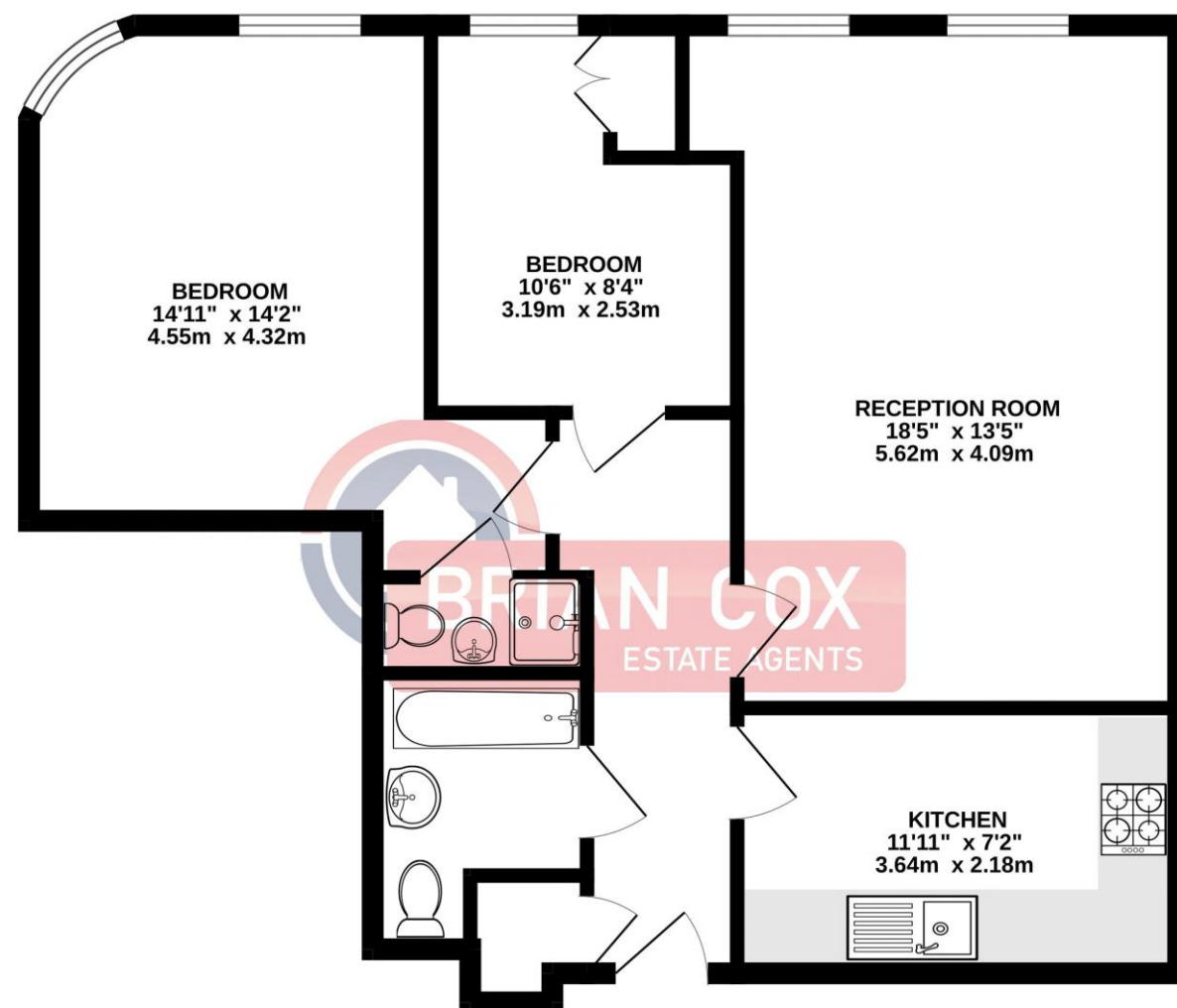


the floorplan...

FIRST FLOOR  
681 sq.ft. (63.3 sq.m.) approx.



TOTAL FLOOR AREA : 681 sq.ft. (63.3 sq.m.) approx.

Whilst every attempt has been made to ensure the accuracy of the floorplan contained here, measurements of doors, windows, rooms and any other items are approximate and no responsibility is taken for any error, omission or mis-statement. This plan is for illustrative purposes only and should be used as such by any prospective purchaser. The services, systems and appliances shown have not been tested and no guarantee as to their operability or efficiency can be given.  
Made with Metropix ©2025

more details from...

call: **Brian Cox Harrow: 020 8912 0006**  
email: [info@brian-cox.co.uk](mailto:info@brian-cox.co.uk)  
web: [www.brian-cox.co.uk](http://www.brian-cox.co.uk)



Consumer Protection from Unfair Trading Regulations 2008 We have not tested any apparatus, equipment, fixtures, fittings or services and so cannot verify that they are in working order or fit for purpose. You are advised to obtain verification from your solicitor or surveyor. References to the tenure of a property are based on information supplied by the seller. We have not had sight of the title documents and a buyer is advised to obtain verification from their solicitor. Items shown in photographs are not included unless specifically mentioned within the sales particulars, but may be available by separate negotiation. We advise you to book an appointment to view before embarking on any journey to see a property, and check its availability.



020 8912 0006  
[brian-cox.co.uk](http://brian-cox.co.uk)



TWO DOUBLE BEDROOMS - TWO BATHROOMS - DEDICATED PARKING - 900+ YEAR LEASE - CHAIN FREE. Brian Cox are pleased to present to the market this exceptional 2 bedroom, 2 bathroom apartment situated on the 1st floor. The property provides easy access to high rated local schools, shops, and transport links and only a short walk to Harrow High Street and Harrow on the Hill Underground Station and Bus Station. The property benefits from double glazing, a long lease, and dedicated parking. Call now so you do not miss out!



Offers Over - £345,000  
Leasehold

Bluepoint Court, Station Road, Harrow  
HA1 2TS





## in brief...

- CHAIN FREE
- 2 DOUBLE BEDROOMS
- 2 BATHROOMS
- LONG LEASE
- SECURE PARKING
- GREAT LOCATION



## the location...

### nearest stations ...

Harrow-on-the-Hill (0.3 miles),  
Harrow & Wealdstone (0.5 miles),  
Kenton (0.7 miles).

Harrow is a large suburban town in the London Borough of Harrow, North West London, England. It is centred 10.5 miles (16.9 km) North West of Charing Cross. Harrow has two large shopping centres which are St Anns and St Georges with its many large department stores, restaurants, cafes and cinema. You have a large Tesco's & Morrison's which are both within a short drive to the property.

Harrow On The Hill which is less than a 15 minute walk away leads to historic buildings, restaurants & wine bars. Harrow on The Hill Metropolitan/Chiltern Line train station is within 0.2 miles distant with its fast links to the city and excellent range of shopping facilities can be found at St Georges & St Anne's shopping centres.

The area is particularly well served for good schooling including Orley Farm Preparatory School, John Lyon, St Dominic's Sixth Form College, St Anselms RC school and the renowned Harrow School.



020 8912 0006

[brian-cox.co.uk](http://brian-cox.co.uk)