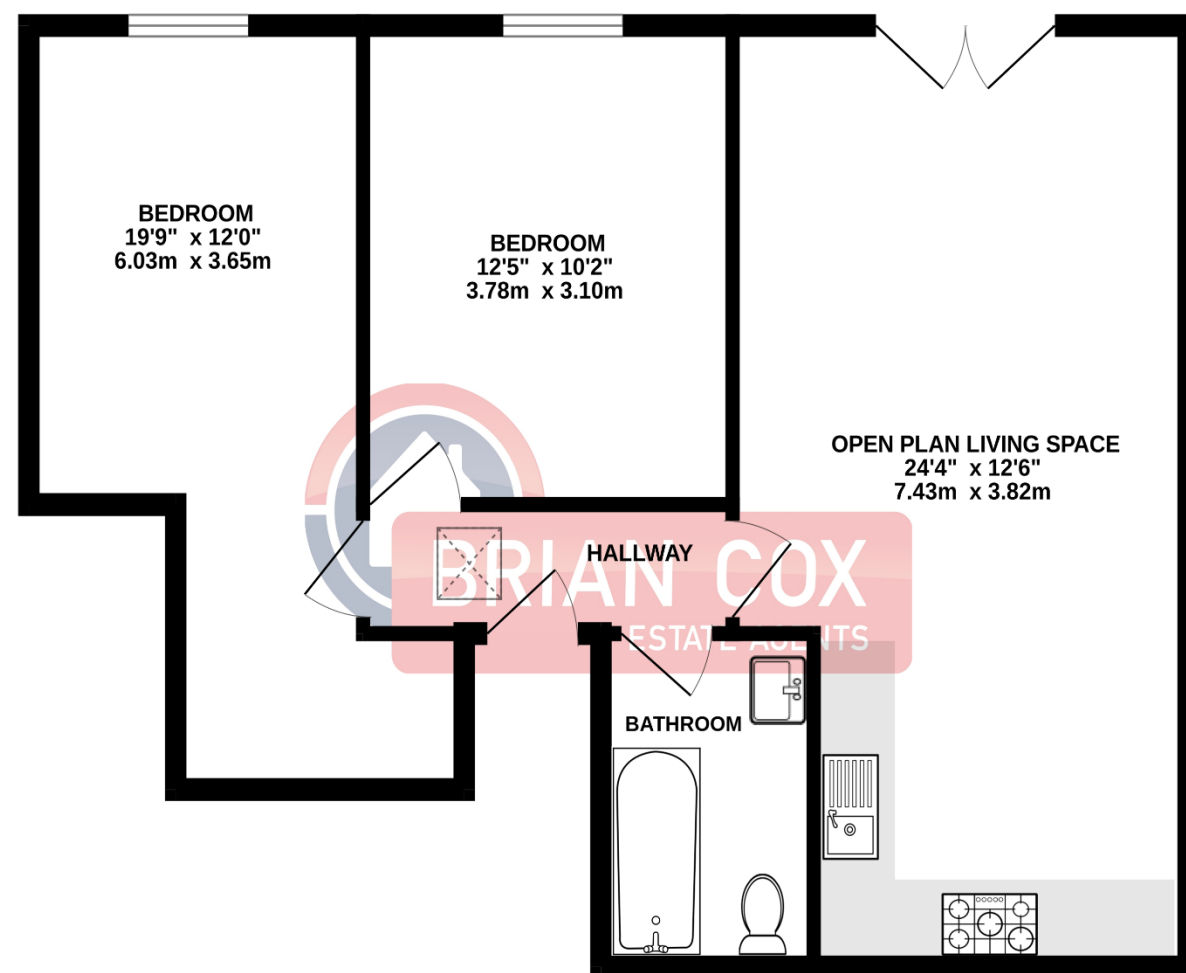


# the floorplan...

SECOND FLOOR  
660 sq.ft. (61.3 sq.m.) approx.



TOTAL FLOOR AREA : 660 sq.ft. (61.3 sq.m.) approx.  
Whilst every attempt has been made to ensure the accuracy of the floorplan contained here, measurements of doors, windows, rooms and any other items are approximate and no responsibility is taken for any error, omission or mis-statement. This plan is for illustrative purposes only and should be used as such by any prospective purchaser. The services, systems and appliances shown have not been tested and no guarantee as to their operability or efficiency can be given.  
Made with Metropix ©2024

## more details from...

call: **Brian Cox Harrow: 020 8912 0006**  
email: **info@brian-cox.co.uk**  
web: **www.brian-cox.co.uk**



Consumer Protection from Unfair Trading Regulations 2008 We have not tested any apparatus, equipment, fixtures, fittings or services and so cannot verify that they are in working order or fit for purpose. You are advised to obtain verification from your solicitor or surveyor. References to the tenure of a property are based on information supplied by the seller. We have not had sight of the title documents and a buyer is advised to obtain verification from their solicitor. Items shown in photographs are not included unless specifically mentioned within the sales particulars, but may be available by separate negotiation. We advise you to book an appointment to view before embarking on any journey to see a property, and check its availability.



020 8912 0006  
brian-cox.co.uk



TWO BEDROOM - SECOND FLOOR APARTMENT - SHARE OF FREEHOLD - VIEW NOW. Brian Cox and Company are delighted to market a rarely available share of freehold apartment located in the heart of Harrow. This contemporary apartment briefly comprises a 23ft open plan living area with a modern fitted kitchen, two double bedrooms and a family bathroom with a three-piece bathroom suite. Further benefits include residents parking (first come first served), double glazing, gas central heating and neutral décor throughout. Viewings are highly recommended for this superbly situated property, so call now to arrange yours!!



Offers Over £355,000  
Share of Freehold

Elmgrove Road, Harrow  
HA1 2QH





## in brief...

- Two Bedroom
- Second Floor Apartment
- Share of Freehold
- No Chain
- Convenient Location
- Close to Amenities



## the location...

### nearest stations ...

Harrow & Wealdstone (0.4 miles)  
Harrow-on-the-Hill (0.5 miles)  
Kenton (0.6 miles)

Fitzgerald House is within walking distance to Harrow on the Hill and Harrow & Wealdstone train stations, Harrow on the Hill is served by National Rail and the London Underground Metropolitan line whilst Harrow Wealdstone is served by London Overground, London Midland, Southern and London Underground Bakerloo line services.

Harrow forms a commercial hub in northwest London, including a well-connected town centre containing two shopping centres, Parades of shops throughout Station Road and the ascending, traditional College Road, Over 300m of a fully pedestrianised shopping/cafe streets.

Harrow is a large suburban town in the London Borough of Harrow, northwest London, England. It is centred 10.5 miles (16.9 km) northwest of Charing Cross. Harrow is home to a large University of Westminster campus and its oldest secondary schools are Harrow School and Harrow High School.