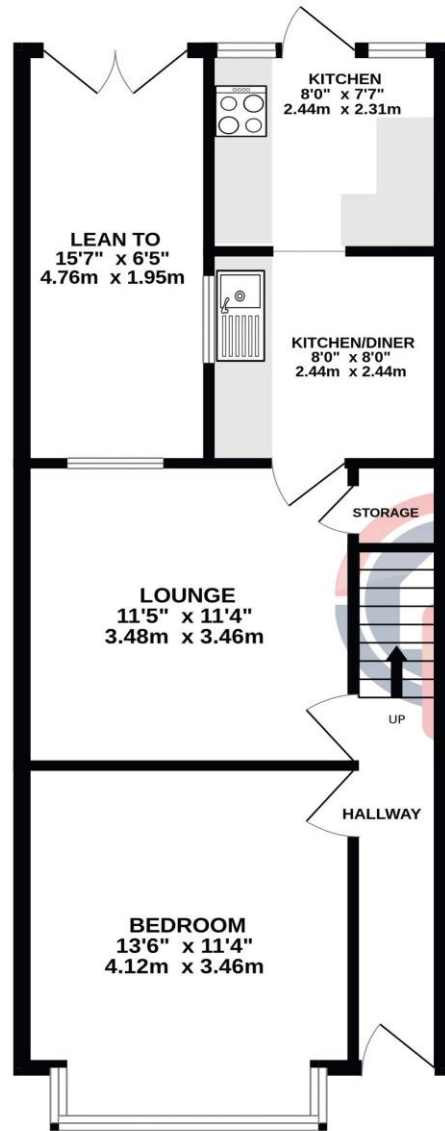
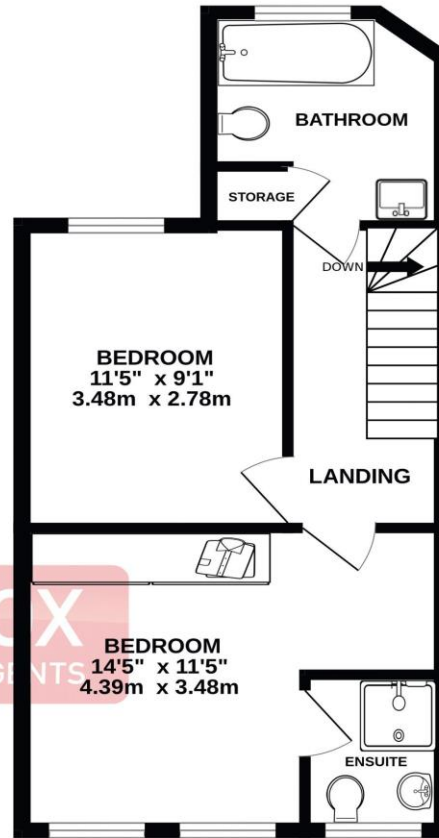


the floorplan...

GROUND FLOOR
573 sq.ft. (53.2 sq.m.) approx.



1ST FLOOR
392 sq.ft. (36.4 sq.m.) approx.



BRIAN COX
ESTATE AGENTS

TOTAL FLOOR AREA : 964 sq.ft. (89.6 sq.m.) approx.

Whilst every attempt has been made to ensure the accuracy of the floorplan contained here, measurements of doors, windows, rooms and any other items are approximate and no responsibility is taken for any error, omission or mis-statement. This plan is for illustrative purposes only and should be used as such by any prospective purchaser. The services, systems and appliances shown have not been tested and no guarantee as to their operability or efficiency can be given.
Made with Metropix ©2024

more details from...

call: **Brian Cox Harrow: 0208 912 0006**
email: daniel.jed@brian-cox.co.uk
web: www.brian-cox.co.uk



0208 912 0006
brian-cox.co.uk

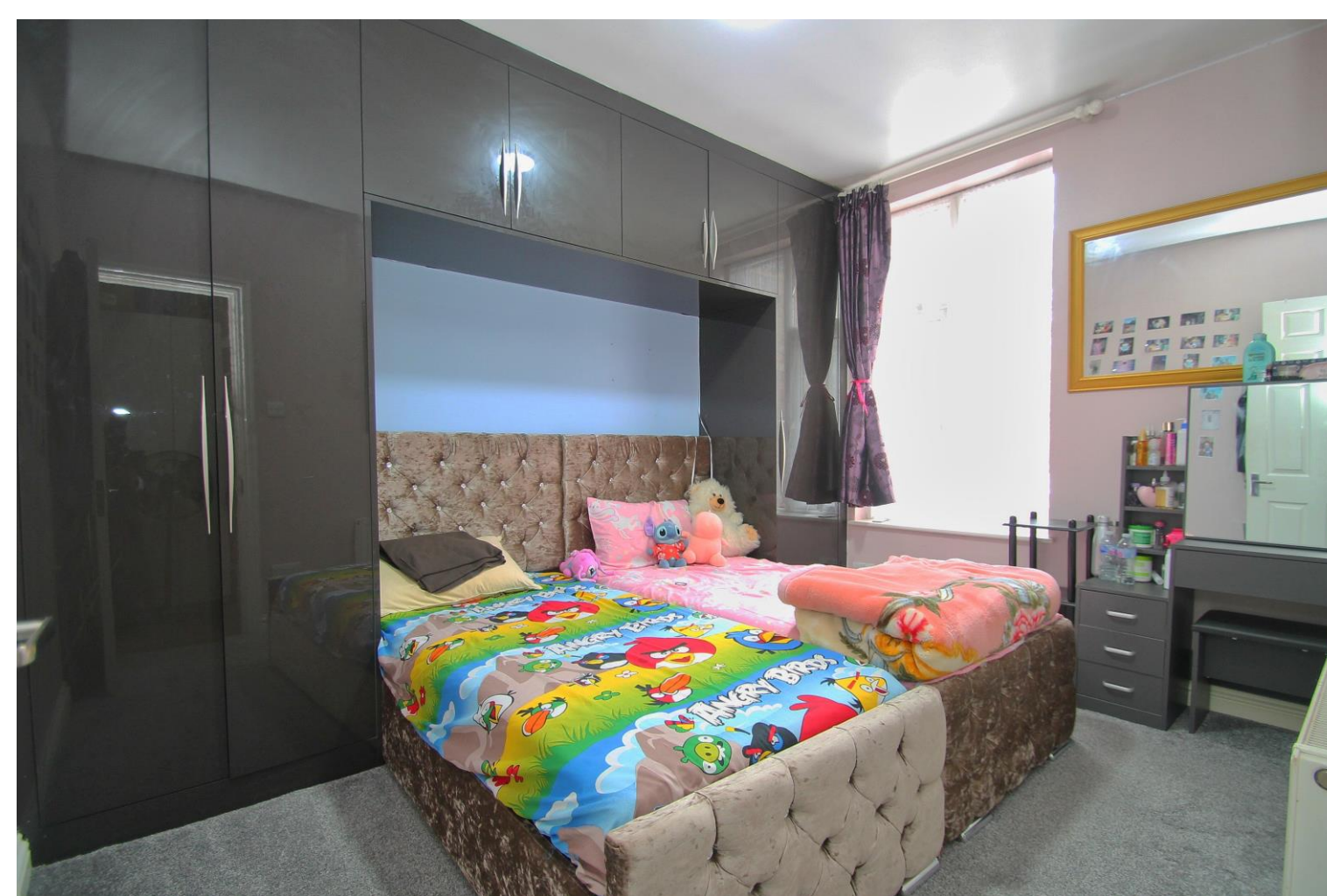


Brian Cox and Company are delighted to bring to the market this three bedroom family home. The property briefly comprises a downstairs double bedroom, a lounge, modern kitchen/diner, a bright lean to, two further bedrooms one of which has an en-suite and finally a family bathroom. Further benefits include a rear garden with shed, double glazing and gas central heating. Viewings are available now, so call to arrange yours!!



£500,000
Freehold

Masons Avenue, Harrow HA3 5AR



in brief...

- Two/Three Bedroom
- Freehold Terrace House
- En-suite to Master Bedroom
- Modern Kitchen
- Convenient Location
- Gas Central Heating



the location...

nearest stations ...

- Harrow & Wealdstone (0.1 miles)
- Harrow-on-the-Hill (0.9 miles)
- North Harrow (1.0 miles)

Harrow is a large suburban town in the London Borough of Harrow, North West London, England. It is centred 10.5 miles (16.9 km) North West of Charing Cross.

Harrow has two large shopping centres which are St Anns and St Georges with its many large department stores, restaurants, cafes and cinema.

There are many local schools in the area some of these include Elmgrove Primary School & Nursery, Marlborough Primary School, Belmont School, The Sacred Heart Language College and Whitefriars School.