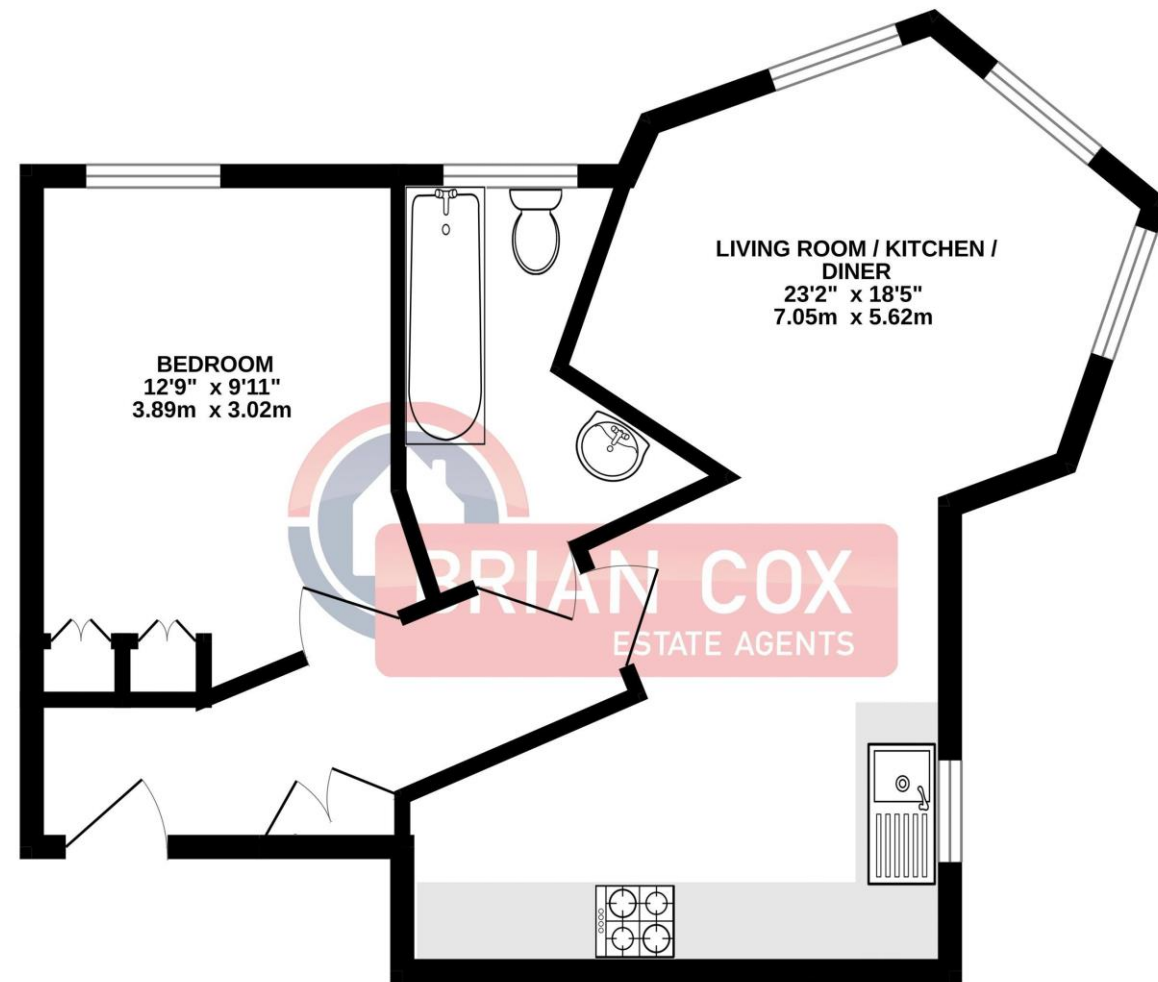


the floorplan...

FIRST FLOOR
465 sq.ft. (43.2 sq.m.) approx.



TOTAL FLOOR AREA: 465 sq.ft. (43.2 sq.m.) approx.
Whilst every attempt has been made to ensure the accuracy of the floorplan contained here, measurements of doors, windows, rooms and any other items are approximate and no responsibility is taken for any error, omission or mis-statement. This plan is for illustrative purposes only and should be used as such by any prospective purchaser. The services, systems and appliances shown have not been tested and no guarantee as to their operability or efficiency can be given.
Made with Metropix ©2024

more details from...

call: **Brian Cox Harrow: 0208 912 0006**
email: info@brian-cox.co.uk
web: www.brian-cox.co.uk



0208 912 0006
brian-cox.co.uk



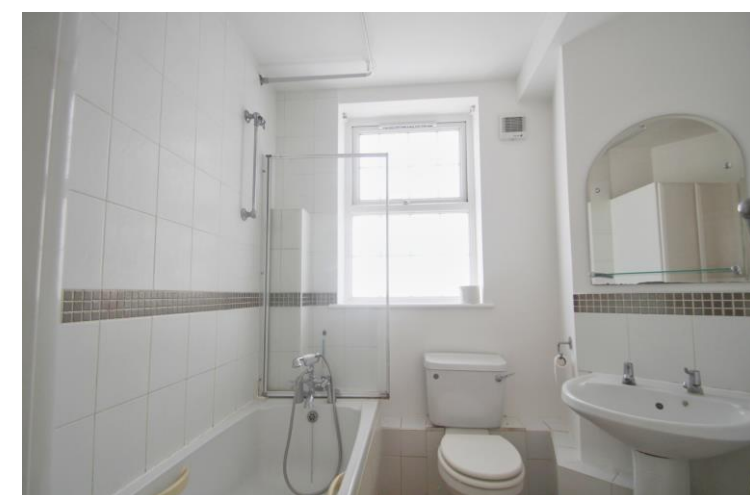
Brian Cox and Company are proud to present to the market this well presented and spacious one bedroom first floor apartment in this modern gated development conveniently situated close to Sudbury Hill tube station. This flat benefits from a large, bright open plan kitchen/reception room, spacious double bedroom with fitted wardrobes and plenty of indoor storage spaces. Outside there is secure gated allocated parking and a communal garden. Call now so you do not miss out!



£300,000

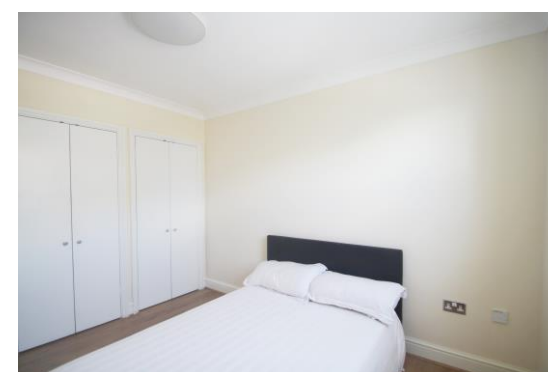
Tower Bridge Mews, Harrow HA1 3QU

Consumer Protection from Unfair Trading Regulations 2008 We have not tested any apparatus, equipment, fixtures, fittings or services and so cannot verify that they are in working order or fit for purpose. You are advised to obtain verification from your solicitor or surveyor. References to the tenure of a property are based on information supplied by the seller. We have not had sight of the title documents and a buyer is advised to obtain verification from their solicitor. Items shown in photographs are not included unless specifically mentioned within the sales particulars, but may be available by separate negotiation. We advise you to book an appointment to view before embarking on any journey to see a property, and check its availability.



in brief...

- CHAIN FREE
- DOUBLE BEDROOM
- GATED PARKING
- COMMUNAL GARDEN
- FIRST FLOOR
- LOW SERVICE CHARGE



the location...

nearest stations ...

- Sudbury Hill Harrow (0.1 miles)
- Sudbury Hill (0.0 miles)
- South Harrow (0.8 miles)

Sudbury Hill is a suburb in the London Borough of Harrow, located in North West London, United Kingdom.

There are many local schools in the area some of these include St George's Primary School, Wood End Academy, Greenwood Primary School and Horsenden Primary School.

There are two stations in the area which are, Sudbury Hill Station (Piccadilly Line) and Sudbury Hill Harrow Station served by National Rail (Chiltern Railways). Frequent buses to Harrow, Wembley, Greenford and Ealing.